

<b>Typenplan</b> <b>type parts list</b>	Betonpumpe: concrete pump:	Mast: boom:
Baugruppenübersicht construction group survey	HP 12523	CB 36.4/125

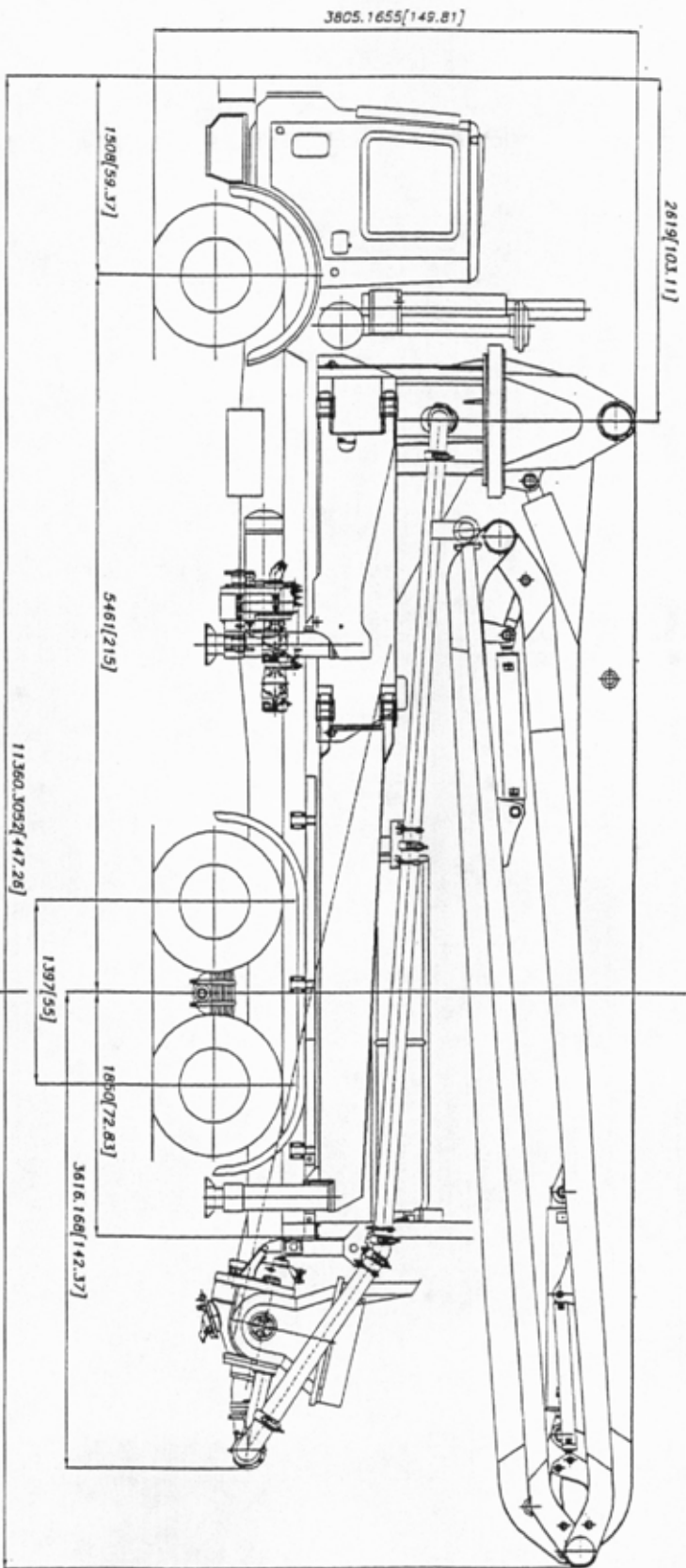
Kunde: customer:	Reed	Auftrags-Nr.: order no.:	980150
Fahrzeug: vehicle:	Mack Truck MR690S	Bestellnr.: purchase no.:	36ST/No.6 50090

Zusammenstellung	assemble cpl.	(B 00 4 011)
Aufbaurahmen	sub frame	01
Rahmen	base frame	B 02 3 040
Rahmenverbindung kpl.	frame connection cpl.	B 03 3 060
Aufbau	housing	04
Abstützung hinten	outrigger cpl.	05
		06
Podeste / Aufstiege	pedestal / ladder	B 07 4 100
Mastauflagebock	boom support	B 08 4 120
Gegengewicht	counter weight	09
Pumpeneinheit kpl.	pump unit cpl.	10
Lagerung	mounting	B 11 4 160
Förderzylinder kpl.	conveying cylinder cpl.	B 12 4 013
Förderkolben kpl.	conveying piston cpl.	B 13 3 012
Spülkasten kpl.	water box cpl.	B 14 3 000
Antriebszylinder	drive cylinder	B 15 4 012
		16
Schiebersystem	s-valve system	B 17 4 003
Zentral / Schmieranlage	central lubrication unit	B 18 4 010
Förderleitung Pumpeinheit	conveying pipe pump unit	B 19 4 065
		20
		21
Trichterzubehör	hopper accessories	B 22 4 046
		23
		24
Rührwerk mit Antrieb	agitator with drive	B 25 4 000
		26
		27
Rüttleinrichtung	vibrating equipment	28
		29
Wasseranlage	water system	30
Wassertank kpl.	water tank cpl.	31
Wasserpumpe mit Antrieb	water pump with drive	WAI 104176
		33
Schlauchleitung	hose line	34
Druckluftanlage	compressed air unit	35
		36
Kompressor mit Antrieb	compressor with drive	37
		38
Schlauchleitung	hose line	39
Hydraulikanlage BP	hydraulic system	40
Hydrauliks. Pumpe/Rührwerk	control block	B 41 4 045
		42
		43
Hydraulikpumpe	hydraulik pump	44
		45
		46
Hydrauliktank / Zubehör	hydraulic tank / accessories	47
Ölkühlung	oil cooler	48
Schläuche / Zubehör	hoses / accessories	49

Elektroanlage Pumpe	wiring diagram	50
Steuerpult	control panel	WAI 104426
Motorabstellung	engine stop	52
Pumpenverstellung elektr.	pump adjustment electr.	53
Drehzahlverstellung	rpm adjustment	54
Elektroanlage Mast	wiring diagram boom	55
Kabelbaum / Zubehör	wiring harness / accessories	B 56 1 031
		57
		58
Funkfernsteuerung	radio remote control	WAI 104428
Verteilermast	distributor boom	B 60 1 010 <sup>1</sup>
Mastbock	boom base	61
Drehwerk	swing gear unit	62
Abstützung	outrigger	B 63 1 120
Förderleitung am Mast	conveying pipeline at boom	64
		65
Armpaket	boom unit	66
		67
Förderleitung am Mastbock	conv. pipel. at boom base	68
		69
Hydraulikanlage Verteilermast	hydraulic system distrib. boom	(B 70 1 010)
Hydrauliksystem Mast	hydraulic system boom	71
Hydrauliksystem Abstützung	hydraulic system outrigger	72
		73
Pumpeneinheit	hydraulik pump	74
		75
		76
Hydrauliktank Mast	hydraulic tank boom	77
		78
		79
Antrieb	drive	80
Verteilergetriebe	distribution gear	WAI 103712
Antriebsaggregat	engine	82
Wellenstrang	lineshaft	83
		84
Straßenfahrwerk	chassis	85
Beleuchtung	lightning	86
Kotflügel	fender	87
Federblockierung	spring lock	88
Achse kpl.	axle cpl.	89
Zubehör	accessories	90
Standardzubehör	standard accessories	WAI 104670
Schilder	sticker	92
		93
		94
		95
		96
		97
		98
		99

Bemerkung / comment:

1	additional parts for delivery:	1x flow devider WAI100159, 1x mobil control block WAI100124
		1x clamping strip complete WAI104555, 1x suc. basket 3" WAI102288
		1x pressure relief valve WAI104777
	Datum/Date: 23.6.98	Bearbeiter/Name: JR Dateiname/file name: 980150.DOC



THIS INFORMATION MAY NOT BE COPIED OR REPRODUCED WITHOUT THE WRITTEN PERMISSION OF MACK TRUCK CORPORATION, 2000 NORTH HIGHWAY 100, BENTON HARBOR, MI 48024-1399 FROM 14.06.1991



DATE	NAME	CONTR.	SCALE 1:35	WIGHT
DATE	NAME	CONTR.		
DATE	NAME	CONTR.	MACK TRUCK MR6905 WITH THP 125/36	DATE OF
DATE	NAME	CONTR.		
DATE	NAME	CONTR.	REF: ACTUAL FOR	
DATE	NAME	CONTR.	REF: ACTUAL BY	
DATE	NAME	CONTR.	REF: ACTUAL BY	
DATE	NAME	CONTR.	REF: ACTUAL BY	

FREE DIMENSION  
TOLERANCE  
DIN 7168  
METRUM

CLAUDE ONLY WITH CAD

MACK TRUCK MR6905  
WITH THP 125/36

B 00 4 011

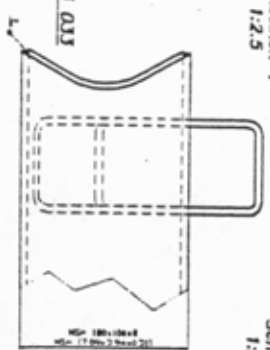
DATE OF

REF: ACTUAL FOR

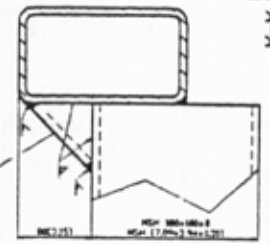
REF: ACTUAL BY

REF: ACTUAL BY

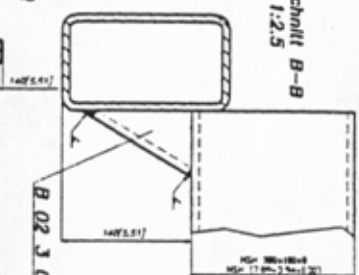
Einzelheit Y  
1:2,5



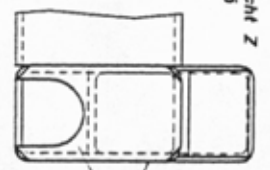
Schnitt A-A  
1:2,5



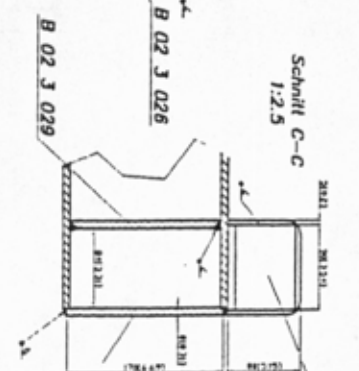
Schnitt B-B  
1:2,5



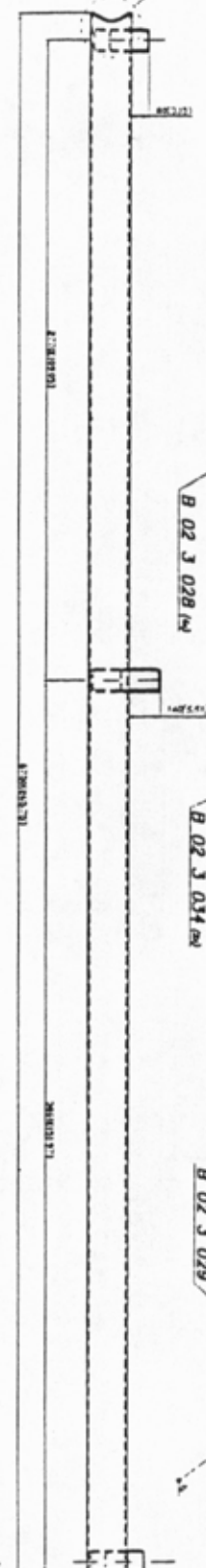
Ansicht Z  
1:2,5



Schnitt C-C  
1:2,5

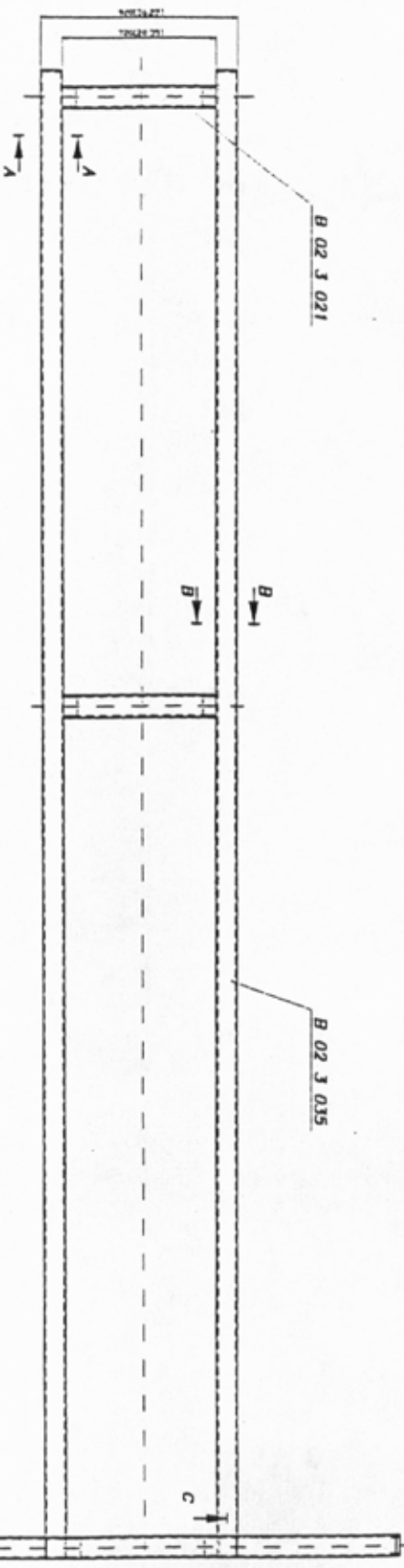


B 02 J 023



B 02 J 021

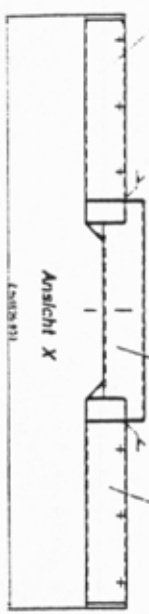
B 02 J 035



B 02 J 024

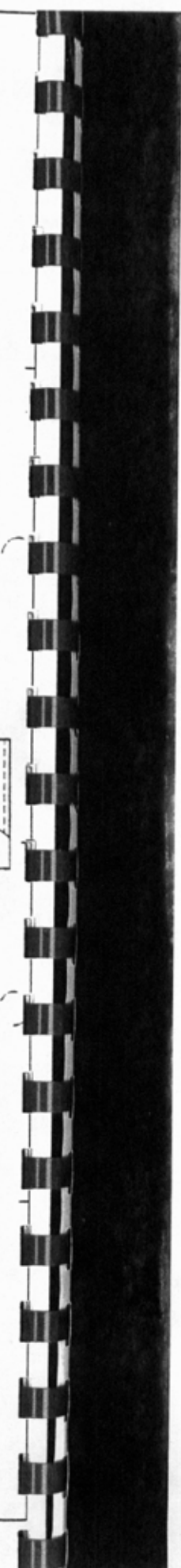
B 02 J 022

B 02 J 025



Materialangaben:  
Material: Stahl  
Zustand: nach dem 1. Nachtrag  
Zusammenbau: nach dem 1. Nachtrag  
Bauart: nach dem 1. Nachtrag  
Sonderdruck: 100  
Druck: 100  
Jahr: 1954  
Arbeits-Nr.: B 02 J 021

	Arbeits-Nr.	B 02 J 021
	Arbeits-Nr.	B 02 J 021
	Arbeits-Nr.	B 02 J 021
	Arbeits-Nr.	B 02 J 021
	Arbeits-Nr.	B 02 J 021
	Arbeits-Nr.	B 02 J 021
	Arbeits-Nr.	B 02 J 021
	Arbeits-Nr.	B 02 J 021
	Arbeits-Nr.	B 02 J 021
	Arbeits-Nr.	B 02 J 021
	Arbeits-Nr.	B 02 J 021
	Arbeits-Nr.	B 02 J 021
	Arbeits-Nr.	B 02 J 021



STOCK LISTEN - DRUCK

Seite 1

posl	description	ident-no	DIN	change-index	chg. dat	weight	quant
	stock	dimensions	material	valid from	val.unt.		unit

1	cross profile	B023021	59410			22.500	2.00
		MSH 180x100x8x719	St52-3				Stk
2	cross profile	B023022	59410			25.200	1.00
		MSH 180x100x8x903	St52-3				Stk
3	cover	B023023	1543/EN10029			0.040	2.00
		B1 8x74x90	St52-3				Stk
4	cross profile left	B023024	59410	a		16.12.97	23.300
		MSH 180x100x750	St52-3				Stk
5	cross profile right	B023025	59410	a		16.12.97	23.300
		MSH 180x100x8x750	St52-3				Stk
6	cover	B023026	1543/EN10029			2.000	2.00
		B1 20x100x180	St52-3				Stk
7	longitudinal profile	B023035	59410			211.000	2.00
		180x100x8x6750	St52-3				Stk
8	gusset plate	B023028	1543/EN10029			0.650	4.00
		B1 8x84x167	St52-3				Stk
9	bulkhead plate	B023029	1543/EN10029			0.700	2.00
		B1 8x82x162	St52-3				Stk

description	drawing-no	ID	date	chg.-index	chg-date	val. from	val.untl
frame f. 36-Mtr. boom USA lengt.rear cu	B023040	H1	18.03.98				

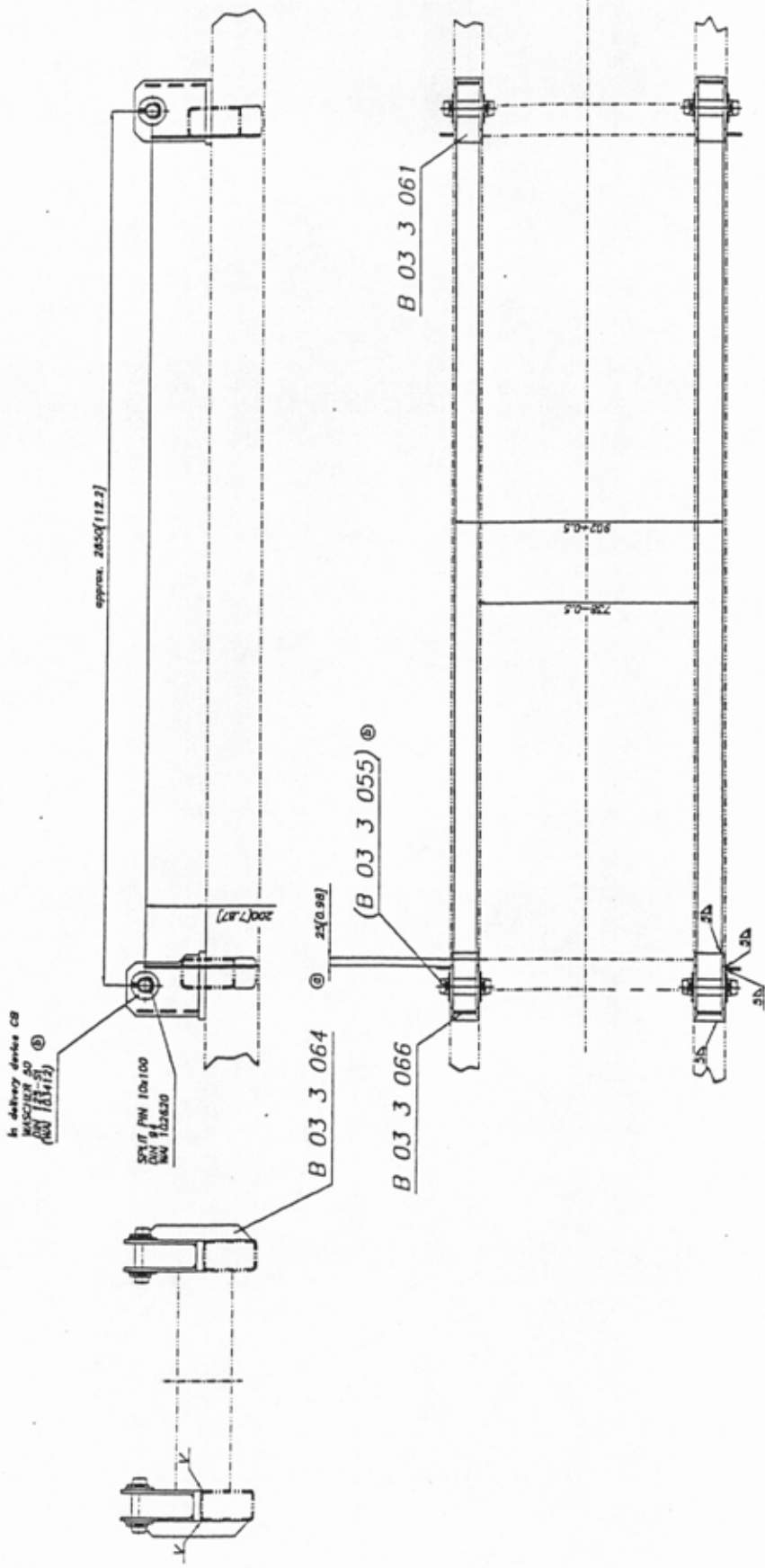
STÜCKLISTEN - DRUCK

pos	description	ident-no	DIN	change-index	chg. dat	weight	quant
	stock	dimensions	material	valid from	val.unt.		unit

10	cover	B023033	1543/EN10029			0.750	2.00
		B1 6x181x88	St52-3				Stk
11	cover	B021210	1543/EN10029			0.920	2.00
		B1 8x88x170	St52-3				Stk
12	gusset plate	B023034	1543/EN10029			1.000	2.00
		B1 8x186x119	St52-3				Stk

description	drawing-no	ID	date	chg.-index	chg-date	val. from	val. until
Frame L. 36-Mtr. boom USA lengt. rear ou	B023040	B1	18.03.98				

\*\*\* Liste beendet am 09/05/98/10.00 \*\*\*



**ATTENTION!**

RETAINING AND CONNECTING COMPONENTS FOR THE CONNECTION BETWEEN BOOM SUPPORT AND SUBFRAME HAVE TO BE FIRED AND WELDED WITH THE SUBFRAME. MAKING USE OF THE PLACED AND ADJUSTED BOOM SUPPORT!

WELDING DETAILS:  
 WELDING METHOD: ACTIVE GAS ARC WELDING  
 FILLER WIRE: MASSIVE WIRE SC.MP.1.0  
 WELDING GAS: M23  
 WELDING AND TEMPERATURE: M23  
 WELDING SPEED: M23  
 WELDING DISTANCE: M23  
 SEAM QUALITY: M23  
 DW 15018 DW 4583 P.3 BS  
 WELDING SEAM INSPECTION: M23  
 WELDING SEAM INSPECTION METHOD: M23  
 VISUAL CONTROL  
 DW 15018

	DW 15018 DW 4583 P.3 BS DW 15018	DW 15018 DW 4583 P.3 BS DW 15018	DW 15018 DW 4583 P.3 BS DW 15018	DW 15018 DW 4583 P.3 BS DW 15018	DW 15018 DW 4583 P.3 BS DW 15018
	DW 15018 DW 4583 P.3 BS DW 15018	DW 15018 DW 4583 P.3 BS DW 15018	DW 15018 DW 4583 P.3 BS DW 15018	DW 15018 DW 4583 P.3 BS DW 15018	DW 15018 DW 4583 P.3 BS DW 15018

THIS INFORMATION MAY NOT BE COVERED BY A DRAWING PARTS LIST TO A DRAWING (FORM DW 15018) (FORM 11.01.01)

Scale 1:10  
 OWN PARTS LIST  
 Connection for boom support 36 mtr. boom  
 B 03 3 060

S P U C K L I S T E N - D R U C K

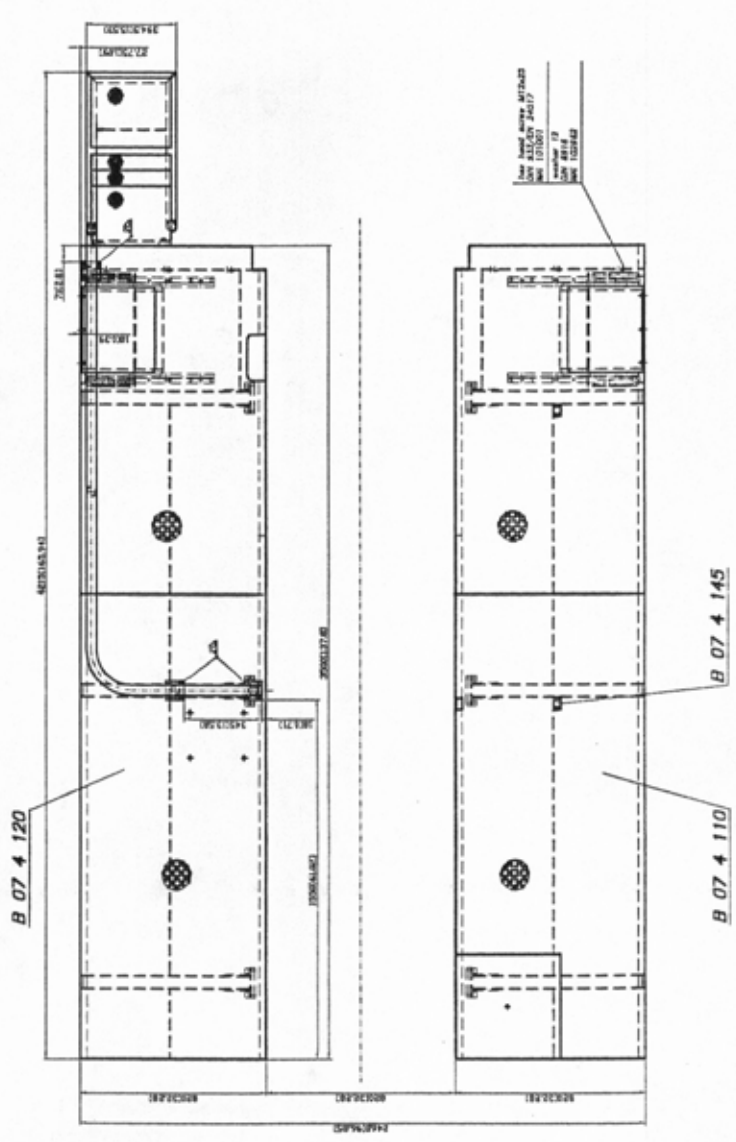
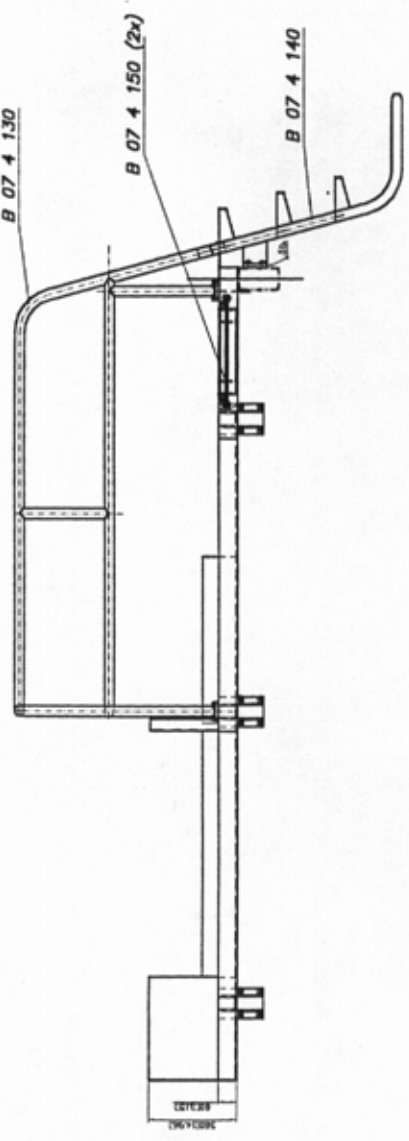
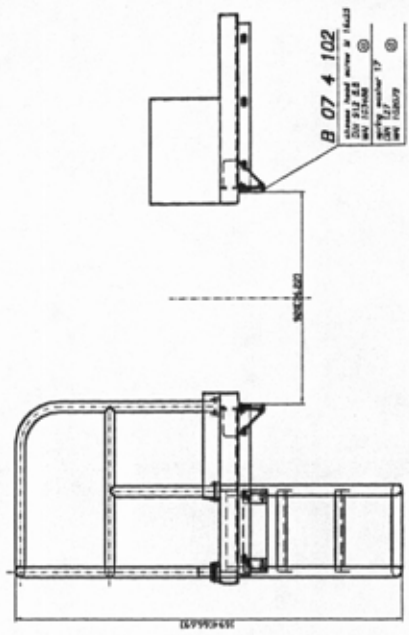
Pos	description	Ident-no	DIN	change-index	chg. dat	weight	quant
	stock	dimensions	material	valid from	val.unc.		unit

1	support rear cpl.	B033061		a	16.01.98	16.000	2.00
	own parts list						Stk
2	ribs	B033064	1017			1.100	4.00
		Flachat. 50x8x370	St52-3				Stk
6	split pin 10 x 100	MA1102620				0.000	8.00
							Stk
7	support front cpl.	B033066				16.000	2.00
	own parts list						Stk

description	drawing-no	ID	date	chg.-index	chg-date	val. from	val. untl
connection for boom support 36-Mtr. boom	B033060	HG	26.06.97	b	04.05.98		

\*\*\* Liste beendet am 09/05/98/09.53 \*\*\*





WELDING METHOD: ACTIVE GAS ARC WELDING  
 WELDING METAL: ER70S-2  
 WELDING POSITION: ALL POS.  
 WELDING SPEED: 17  
 WELDING TEMPERATURE: 200-250°C  
 WELDING PREHEAT: 100-150°C  
 WELDING INTERMEDIATE HEAT TREATMENT: NONE  
 WELDING POST HEAT TREATMENT: NONE  
 WELDING DEFECTS: NONE  
 WELDING INSPECTION: 100%  
 WELDING APPROVAL: [Signature]

REV. 512  
 DWG. PARTS LIST  
**Pedestal and ladder  
 36-Mtr. boom**  
**B 07 4 100**

NO.	REV.	DATE	BY	CHKD.

CHANG. SHEET WITH CHG. [Signature]

THIS DRAWING IS THE PROPERTY OF  
 THE COMPANY AND IS NOT TO BE  
 REPRODUCED OR COPIED IN ANY  
 MANNER WITHOUT THE WRITTEN  
 PERMISSION OF THE COMPANY.



pos	description	ident-no	DIN	change-index	chg. dat	weight	quant
stock		dimensions	material	valid from	val.unt.		unit

1	pedestal left cpl. 36-Mtr. boom own parts list	B074110		a	14.01.98	150.000	1.00 stk
2	pedestal right cpl. 36-Mtr. boom own parts list	B074120		a	14.01.98	130.000	1.00 stk
3	railing cpl. 36-Mtr. boom own parts list	B074130		a	02.09.97	29.000	1.00 stk
4	stair case steep 36-Mtr. boom own parts list	B074140				26.000	1.00 stk
5	profil cpl. own parts list	B074145				1.500	2.00 stk
6	flap cpl. 36-Mtr. boom own parts list	B074150				9.000	2.00 stk
7	thread plate	B074102	1543/ENT0029			1.800	6.00 stk
		BL 15x110x130	St37-2				✓ stk
8	hex. bolt M12 x 25 DIN 933 8.8	WA1101001				0.035	6.00 stk
9	cheese head screw M 16 x 25	WA1103488				0.000	24.00 stk

description	drawing-no	10	date	chg.-index	chg-date	val.from	val.unt
pedestal / ladder 36-Mtr. boom	B074100	HG	26.06.97	a	01.09.97		

STÜCKLISTEN - DRUCK

pos	description	ident-no	DIN	change-index	chg. dat	weight	quant
	stock	dimensions	material	valid from	val.unt.		unit

10	washer	WA1102962				0.013	6.00
							stk
11	spring washer A16	WA1102072				0.008	24.00
							stk

description	drawing-no	10	date	chg.-index	chg-date	val.from	val.unti
pedestal / ladder 36-Mtr. boom	8074100	HG	26.06.97	a	01.09.97		

\*\*\* Liste beendet am 25/06/98/13.12 \*\*\*