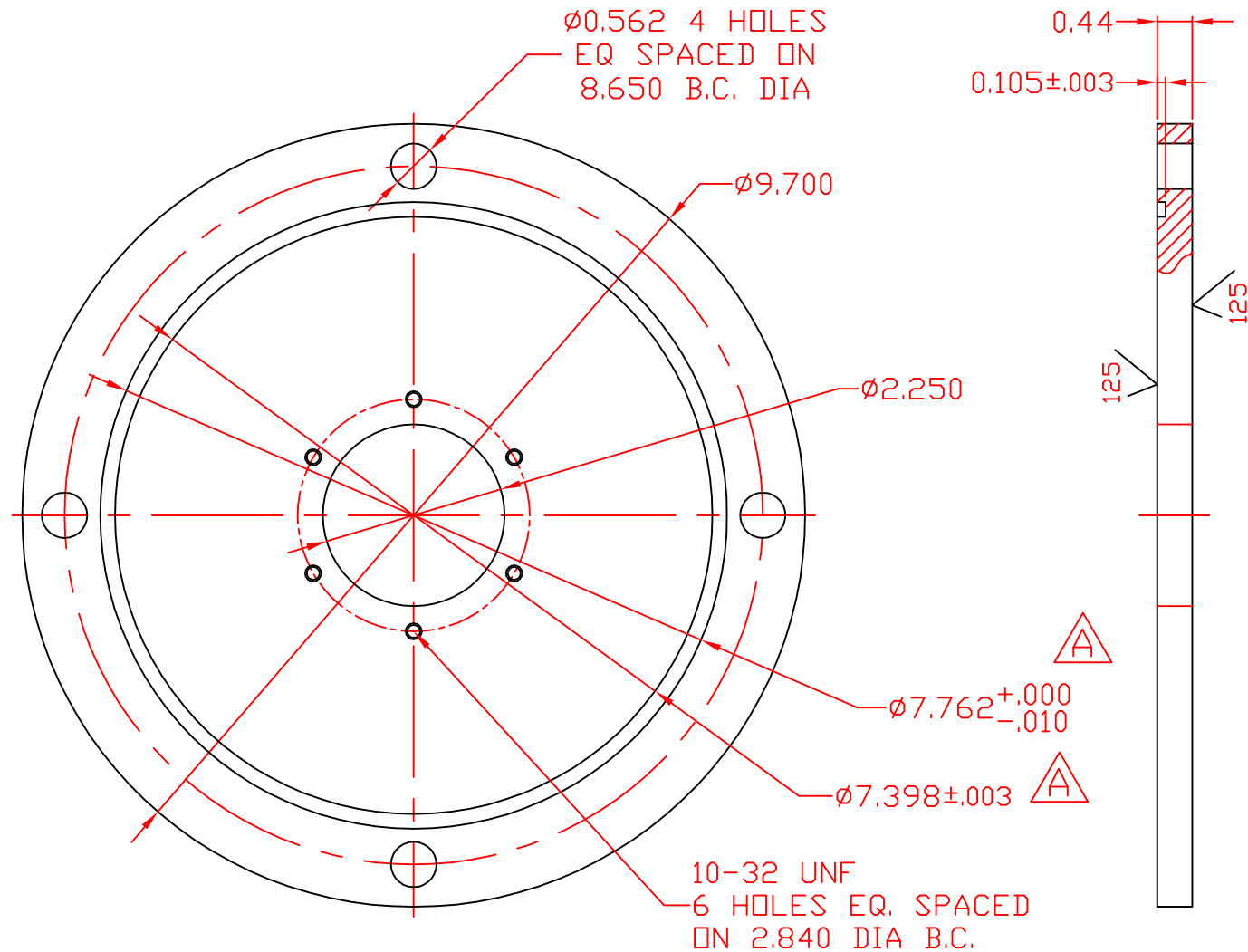


PART NUMBER	REV
802930	B



				UNLESS OTHERWISE SPECIFIED, DIMENSIONS ARE IN INCHES AND TOLERANCES ARE:			REED		CONCRETE PLACING EQUIPMENT		
				FRACT DECIMAL ANGLE .030 .010 1/2°			WALNUT, CA 91789				
				DO NOT SCALE DRAWING			TITLE				
							COVER OIL TANK WITH FILLER NECK				
				C E	BY	DATE	MATERIAL		1/2" THK HRS	PART NUMBER	REV
A	11/17/04	ECN # 976		SK			THIS DRAWING IS THE PROPERTY OF REED MANUFACTURING AND IS LOANED WITHOUT CONSIDERATION OTHER THAN THE BORROWER'S AGREEMENT THAT IT SHALL NOT BE REPRODUCED, COPIED, LOANED, OR DISPOSED OF, DIRECTLY OR INDIRECTLY, NOR USED FOR ANY PURPOSE OTHER THAN THAT FOR WHICH IT IS SPECIFICALLY FURNISHED.		802930		B
LTR	DATE	ENGINEERING CHANGE NOTICE #		BY	DRAWN	SK	9/24/04				
REVISIONS				APPVD			SHEET __ OF __				