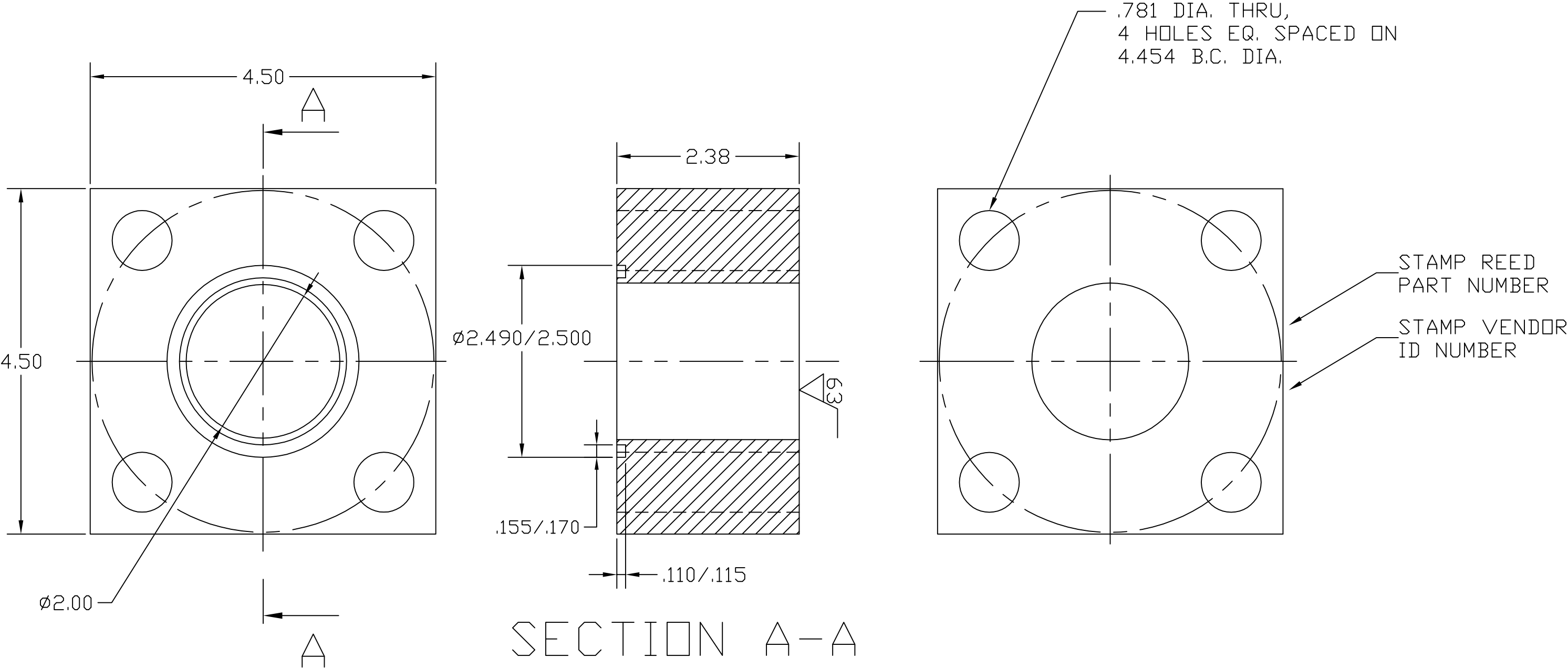


NOTES: USED WITH W-106154 DRIVE CYLINDER.



				DO NOT SCALE DRAWING			REED	CONCRETE PLACING EQUIPMENT CHINO, CA 91710		
				UNLESS OTHERWISE SPECIFIED, DIMENSIONS ARE IN INCHES.						
				TOLERANCES: .XX .030 .XXX .010 FRACTION 1/32 ANGLE 1/2°			TITLE MANIFOLD, SUB PLATE, ROD END			
							MATERIAL #65-45-12 DUCTILE IRON		PART NUMBER	REV
									802890	
REV	DATE	DESCRIPTION OF CHANGE	BY	DRAWN	DR	6/03/04	THIS DRAWING IS THE PROPERTY OF REED MANUFACTURING AND IS LOANED WITHOUT CONSIDERATION OTHER THAN THE BORROWER'S AGREEMENT THAT IT SHALL NOT BE REPRODUCED, COPIED, LOANED, OR DISPOSED OF, DIRECTLY OR INDIRECTLY, NOR USED FOR ANY PURPOSE OTHER THAN THAT FOR WHICH IT IS SPECIFICALLY FURNISHED.			
REVISIONS				APPVD			SHEET 1 OF 1			