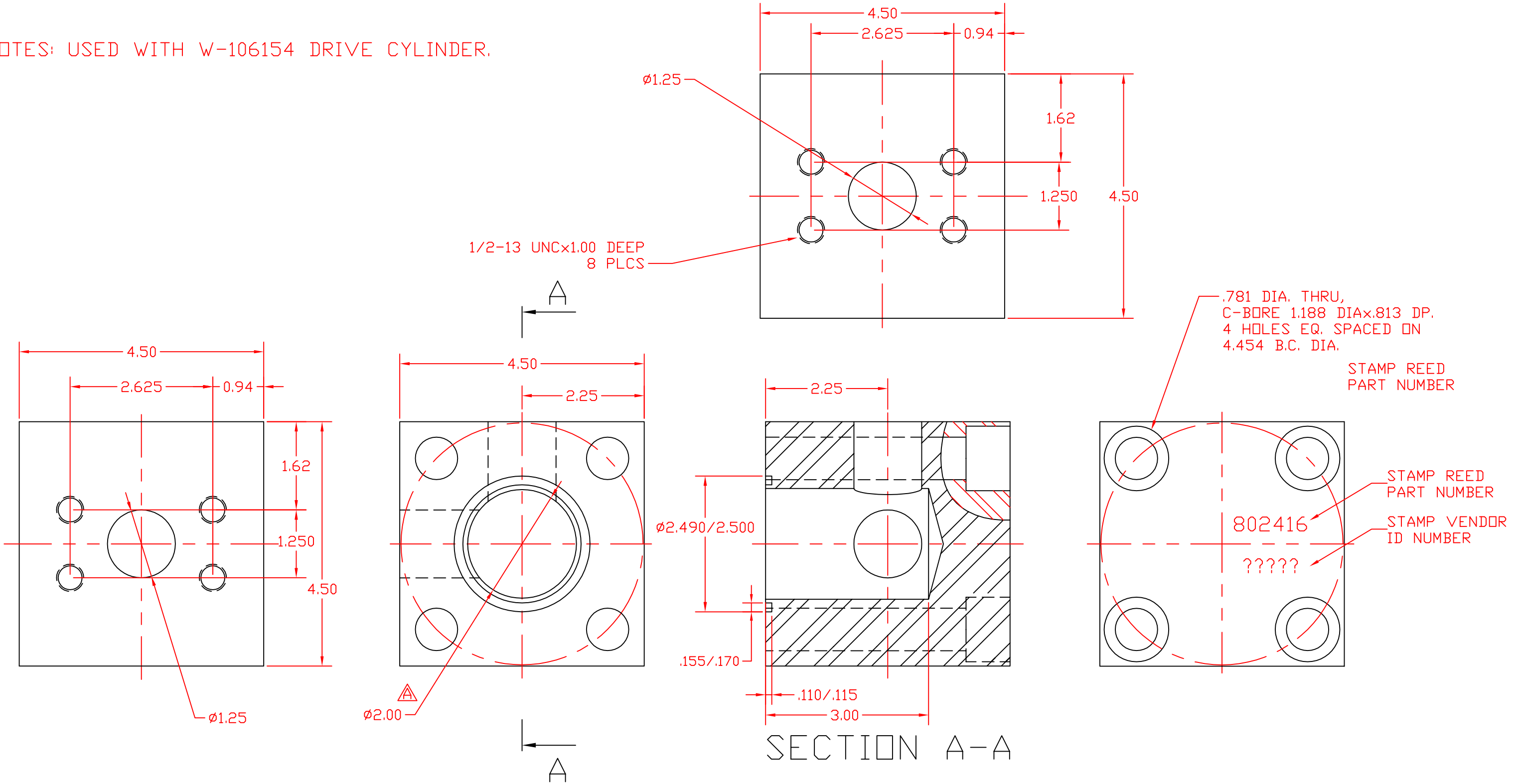


NOTES: USED WITH W-106154 DRIVE CYLINDER.



				DO NOT SCALE DRAWING			REED		CONCRETE PLACING EQUIPMENT CHINO, CA 91710		
				UNLESS OTHERWISE SPECIFIED, DIMENSIONS ARE IN INCHES.							
				TOLERANCES: .XX .030 .XXX .010 FRACTION 1/32 ANGLE 1/2°			TITLE MANIFOLD, CYLINDER, ROD END				
B	12/17/03	ECN # 858	SK	DRAWN SK 5/03/01			MATERIAL #65-45-12 DUCTILE IRON			PART NUMBER	REV
A	7/11/01	ECN # 350	SK				802416			B	
—	5/29/01	ECN #318	SK	APPVD			THIS DRAWING IS THE PROPERTY OF REED MANUFACTURING AND IS LOANED WITHOUT CONSIDERATION OTHER THAN THE BORROWER'S AGREEMENT THAT IT SHALL NOT BE REPRODUCED, COPIED, LOANED, OR DISPOSED OF, DIRECTLY OR INDIRECTLY, NOR USED FOR ANY PURPOSE OTHER THAN THAT FOR WHICH IT IS SPECIFICALLY FURNISHED.				
REV	DATE	DESCRIPTION OF CHANGE	BY				SHEET 1 OF 1				
REVISIONS											