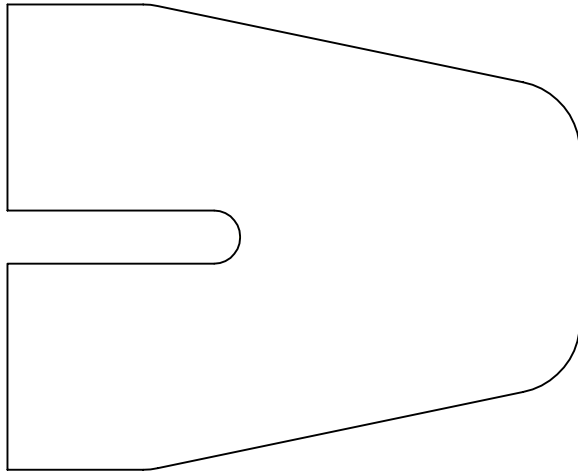


PART NUMBER	REV
801685	



TEMPLATE-FULL SIZE
MATERIAL: 1/4" PLATE HRS
PN 801685

BREAK ALL CORNERS AND SHARP EDGES

				UNLESS OTHERWISE SPECIFIED, DIMENSIONS ARE IN INCHES AND TOLERANCES ARE:			<i>REED</i>	CONCRETE PLACING EQUIPMENT		
				FRACT 1/32	DECIMAL .030	ANGLE 1/2°		CHINO, CA 91710		
				DO NOT SCALE DRAWING			TITLE			
				C E	BY	DATE	MATERIAL 1/4 PLATE HRS		PART NUMBER	REV
					DRAWN	EYBARRA	2/14/00	THIS DRAWING IS THE PROPERTY OF REED MANUFACTURING AND IS LOANED WITHOUT CONSIDERATION OTHER THAN THE BORROWER'S AGREEMENT THAT IT SHALL NOT BE REPRODUCED, COPIED, LOANED, OR DISPOSED OF, DIRECTLY OR INDIRECTLY, NOR USED FOR ANY PURPOSE OTHER THAN THAT FOR WHICH IT IS SPECIFICALLY FURNISHED.		801685
LTR	DATE	ENGINEERING CHANGE NOTICE #		BY	APPVD			SHEET __ OF __		
REVISIONS										