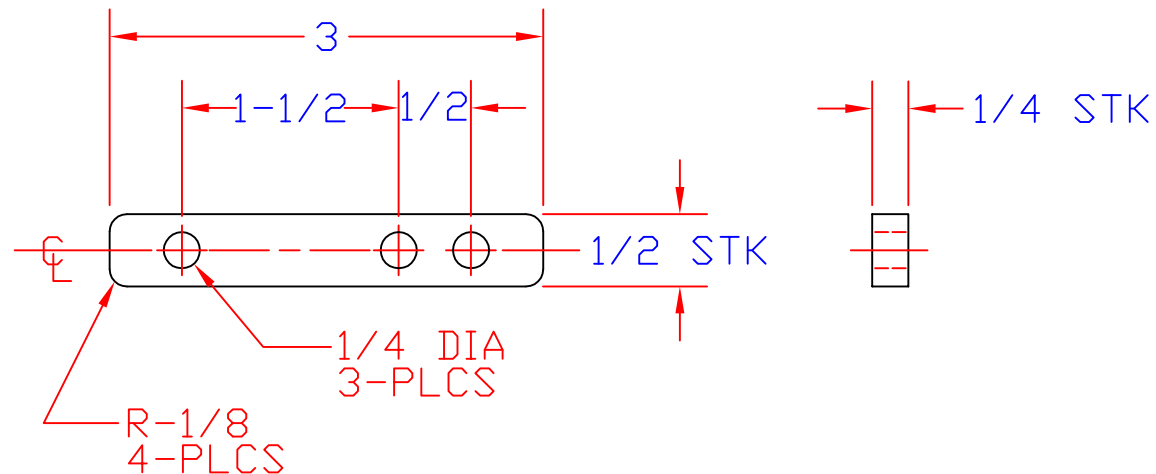


PART NUMBER REV

10176

PART NUMBER
80032



WT= 0.11 LB

BREAK ALL SHARP CORNERS AND EDGES

UNLESS OTHERWISE SPECIFIED,
DIMENSIONS ARE IN INCHES AND
TOLERANCES ARE:

FRACT DECIMAL ANGLE
1/32 .030 1/2°

DO NOT SCALE DRAWING

CE

BY

DATE

DRAWN EYBARRA 12/8/97

REED

CONCRETE PLACING EQUI
CHINO, CA 91710

TITLE

ARM, THROTTLE

MATERIAL #68250 1/8x1"x1" ANGLE HRS

PART NUMBER

80032

THIS DRAWING IS THE PROPERTY OF REED MANUFACTURING AND IS
LOANED WITHOUT CONSIDERATION OTHER THAN THE BORROWER'S
AGREEMENT THAT IT SHALL NOT BE REPRODUCED, COPIED, LOANED,

UNLESS OTHERWISE SPECIFIED,
DIMENSIONS ARE IN INCHES AND
TOLERANCES ARE:

FRACT DECIMAL ANGLE
1/32 .030 1/2°

DO NOT SCALE DRAWING

CE

BY

DATE

DRAWN

D.L.D.

6-23-97

APPVD

REED

CONCRETE PLACING EQUIPMENT
WALNUT, CA 91789

TITLE

MOUNTING BRACKET SUPPORT

MATERIAL

#68895 1/2" PIPE

PART NUMBER

10176

REV

THIS DRAWING IS THE PROPERTY OF REED MANUFACTURING AND IS
LOANED WITHOUT CONSIDERATION OTHER THAN THE BORROWER'S
AGREEMENT THAT IT SHALL NOT BE REPRODUCED, COPIED, LOANED,
OR DISPOSED OF, DIRECTLY OR INDIRECTLY, NOR USED FOR ANY
PURPOSE OTHER THAN THAT FOR WHICH IT IS SPECIFICALLY
FURNISHED.

SHEET __ OF __

1. BREAK ALL SHARP CORNERS AND EDGES

NOTE:

LTR	DATE	ENGINEERING CHANGE NOTICE #	BY
LTR	DATE	ENGINEERING CHANGE NOTICE #	BY

REVISIONS

APPVD