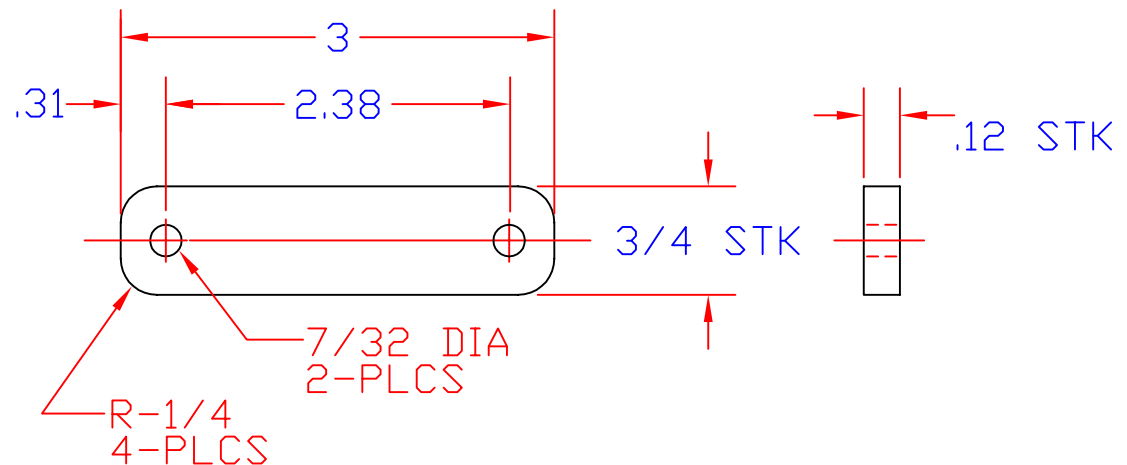



PART NUMBER
80031



BREAK ALL SHARP CORNERS AND EDGES

[illegible]

NOTE: 1. BREAK ALL SHARP CORNERS AND EDGES

				UNLESS OTHERWISE SPECIFIED, DIMENSIONS ARE IN INCHES AND TOLERANCES ARE:		REED		CONCRETE PLACING EQUIPMENT	
				FRACT 1/32	DECIMAL .030	ANGLE 1/2°	WALNUT, CA 91789		
				DO NOT SCALE DRAWING		TITLE MOUNTING BRACKET SUPPORT			
					BY	DATE	MATERIAL #68895 1/2" PIPE		PART NUMBER
				DRAWN	D.L.D.	6-23-97	THIS DRAWING IS THE PROPERTY OF REED MANUFACTURING AND IS LOANED WITHOUT CONSIDERATION OTHER THAN THE BORROWER'S AGREEMENT THAT IT SHALL NOT BE REPRODUCED, COPIED, LOANED, OR DISPOSED OF, DIRECTLY OR INDIRECTLY, NOR USED FOR ANY PURPOSE OTHER THAN THAT FOR WHICH IT IS SPECIFICALLY FURNISHED.		REV
LTR	DATE	ENGINEERING CHANGE NOTICE #	BY	REVISIONS		APPVD	SHEET __ OF __		