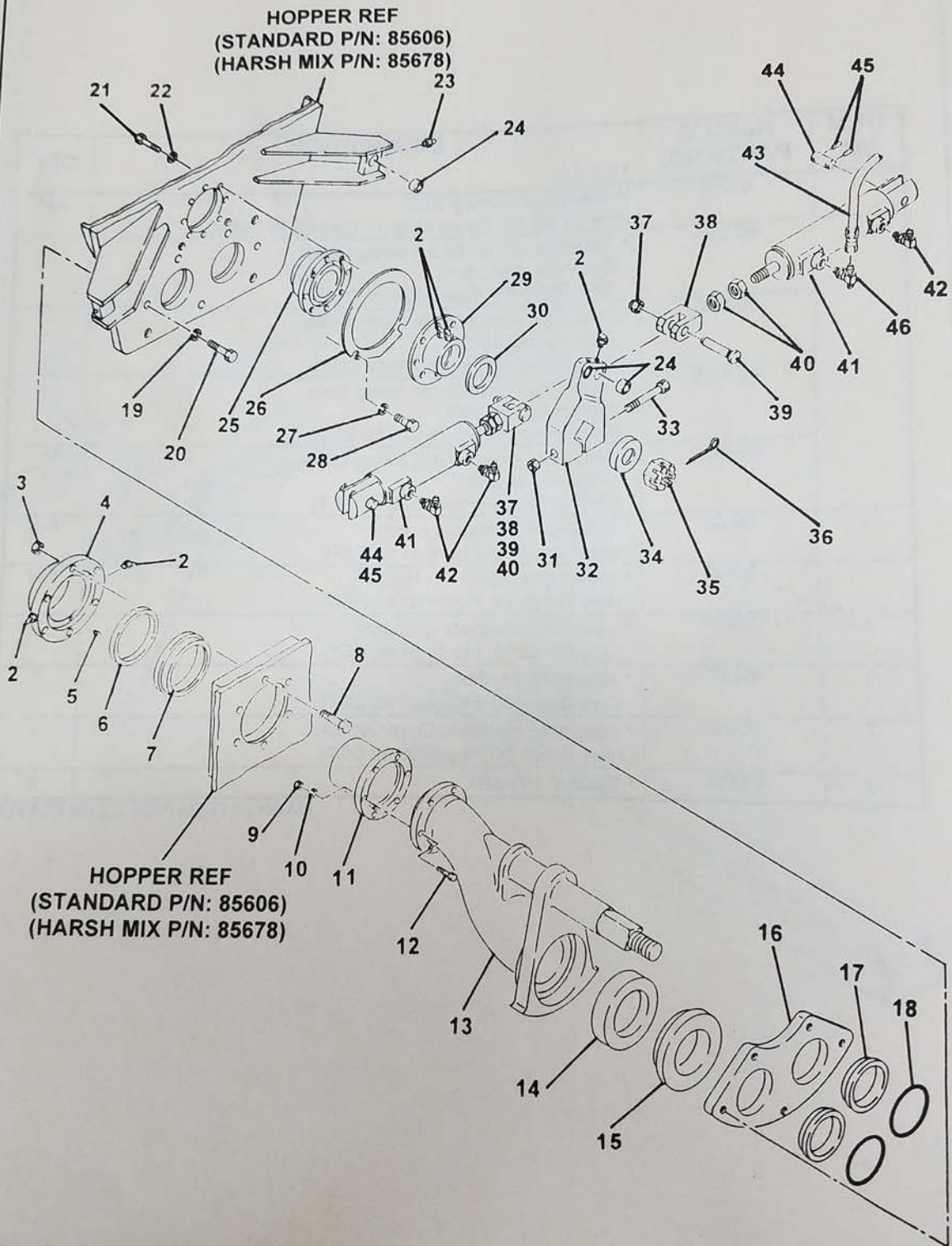


# REED

## 3 INCH OUTLET SWING VALE ASSEMBLY (BEFORE AUGUST 2001)

**B10R**  
**PARTS**  
GROUP 60  
FIGURE 02A  
PAGE 01



**REED****3 INCH OUTLET  
SWING VAVE ASSEMBLY  
(BEFORE AUGUST 2001)****B10R  
PARTS  
GROUP 60  
FIGURE 02A  
PAGE 02**

ITEM NO.	REED'S PARTS NO.	DESCRIPTION					QTY
		1	2	3	4	5	
-1	60-02A	Assembly, 3 Inch Outlet Swing Valve (Before August 2001) (See Group 60, Figure 01 for NHA)					Ref
2		• Fitting, Grease					5
3		• Nut					6
4	79651	• Outlet, 3 Inch Chrome Flange					1
5		• Pin, Spring					4
6	71340	• Seal, Outlet Housing					2
7	71341	• Housing, Outlet Seal					1
8		• Bolt, Hex					6
9		• Nut, Nylock					6
10		• Washer, Lock					6
11	79652	• Outlet, 3 Inch Chromed					1
12		• Bolt, Hex					6
13	79641	• Weldment, 3 Inch To 3 Inch Swing Tube					1
14	76963	• Seal, 3 Inch Double Lip					1
15	76964	• Ring, Hard Face 3 Inch Double Lip Wear					1
16	76968	• Plate, 3 Inch Wear					1
17	76962	• Ring, 3 Inch Anti Chip					2
18	71247	• O-Ring					2
19		• Washer, Lock					5
20		• Bolt, Hex					5
21		• Bolt, Hex					4
22		• Washer, Lock					4
23		• Fitting, Grease STR					2
24	71011	• Race, Inner					4
25	73564	• Seal Flange Bearing					1
26	71384	• Ring, Locator					1
27	77948	• Washer, Lock					2
28	77949	• Bolt, Hex					2
29	70124	• Bearing, Flange					1
30	70141	• Washer, Thrust					1

DASH (-) ITEM NOT ILLUSTRATED

REVISION: JULY 2001



**REED****3 INCH OUTLET  
SWING VAVE ASSEMBLY  
(BEFORE AUGUST 2001)****B10R  
PARTS  
GROUP 60  
FIGURE 02A  
PAGE 04**

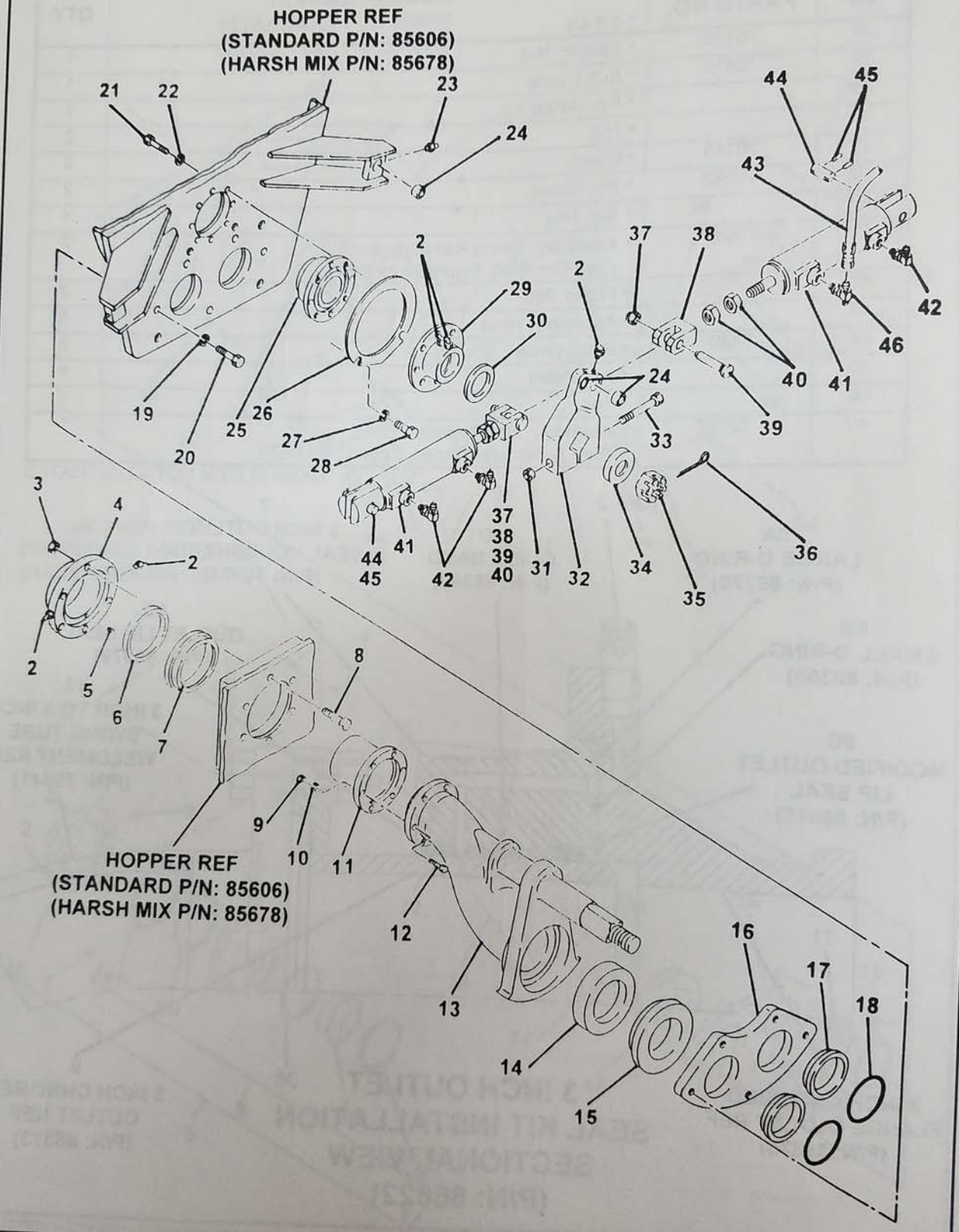
ITEM NO.	REED'S PARTS NO.	DESCRIPTION					QTY
		1	2	3	4	5	
31						• Nut	1
32	85604					• Crank, Bell	1
33						• Bolt, Hex	4
34	70125					• Spacer, Nut	1
35	70825					• Nut, Castle	1
36						• Pin, Safety	1
37						• Nut	2
38	70143					• Clevis	2
39	70142					• Pin, Clevis	2
40						• Nut, Hex	4
41	75087					• Assembly, Swing Ram Cylinder (See Group 60, Figure 03 for DET)	2
42						• Fitting, 90	3
43						• Assembly, Hose	1
44	74207					• Pin, Cylinder	2
45						• Pin, Roller	4
46						• Tee	1
-47	79727					• Assembly, <b>B10R</b> Hose (See Schematic Section, Page 17 for REF)	1

DASH (-) ITEM NOT ILLUSTRATED



# 4 INCH OUTLET SWING VAVE ASSEMBLY (BEFORE AUGUST 2001)

**PARTS**  
GROUP 60  
FIGURE 02C  
PAGE 01



REVISION: JULY 2001



**REED**

## 4 INCH OUTLET SWING VAVE ASSEMBLY (BEFORE AUGUST 2001)

**B10R**  
**PARTS**  
GROUP 60  
FIGURE 02C  
PAGE 02

ITEM NO.	REED'S PARTS NO.	DESCRIPTION					QTY
		1	2	3	4	5	
-1	60-02C	Assembly, 4 Inch Outlet Swing Valve (Before August 2001) (See Group 60, Figure 01 for NHA)					Ref
2		• Fitting, Grease					5
3		• Nut					6
4	71346	• Outlet, 4 Inch Flange					1
5		• Pin, Spring					4
6	71340	• Seal, Outlet Housing					2
7	71341	• Housing, Outlet Seal					1
8		• Bolt, Hex					6
9		• Nut, Nylock					6
10		• Washer, Lock					6
11	71343	• Outlet, 4 Inch Chromed					1
12		• Bolt, Hex					6
13	71349	• Weldment, 4 Inch To 4 Inch Swing Tube					1
14	72285	• Seal, Double Lip					1
15	72384	• Ring, 26% Chrome 4 Inch Double Lip Wear					1
16	71251	• Plate, 4 Inch Wear					1
17	71254	• Ring, Anti Chip					2
18	71247	• O-Ring					2
19		• Washer, Lock					5
20		• Bolt, Hex					5
21		• Bolt, Hex					4
22		• Washer, Lock					4
23		• Fitting, Grease STR					2
24	71011	• Race, Inner					4
25	73564	• Seal Flange Bearing					1
26	71384	• Ring, Locator					1
27	77948	• Washer, Lock					2
28	77949	• Bolt, Hex					2
29	70124	• Bearing, Flange					1
30	70141	• Washer, Thrust					1

DASH (-) ITEM NOT ILLUSTRATED

REVISION: JULY 2001