



**SOVA SERIES 7 PNEUMATIC SPRAYING MACHINE  
ILLUSTRATED PARTS BREAKDOWN**

**SOVA  
PARTS  
GROUP 00  
FIGURE 00  
PAGE 01**

**REED PNEUMATIC SPRAYING MACHINE MODEL SOVA™ SERIES 7 ILLUSTRATED PARTS MANUAL CONTAINS THE FOLLOWING GROUPS AND FIGURES:**

**GROUP 00 HOW TO USE PARTS MANUAL**

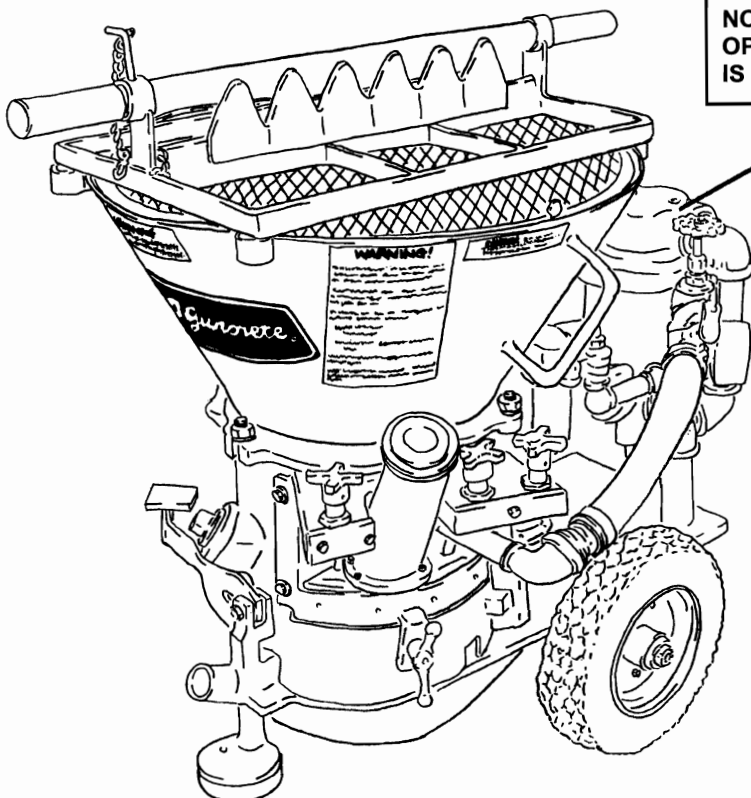
- FIGURE 00** TABLE OF CONTENTS
- FIGURE 01** HOW TO USE PARTS MANUAL
- FIGURE 02** HOW TO ORDER PARTS

**GROUP 10 FINAL INSTALLATION**

- FIGURE 00** TABLE OF CONTENTS
- FIGURE 01** FINAL INSTALLATION
- FIGURE 02** DECAL ASSEMBLY

**GROUP 30 BASE GEAR INSTALLATION**

- FIGURE 00** TABLE OF CONTENTS
- FIGURE 01** BASE INSTALLATION
- FIGURE 02** BASE GEAR ASSEMBLY
- FIGURE 03** DRIVE SPINDLE ASSEMBLY



**NOTE: WATER SEPARATOR SHOWN IS AN  
OPTIONAL ACCESSORY. INSTALLATION  
IS HIGHLY RECOMMENDED.**

**GROUP 40 HOPPER AND PAD INSTALLATION**

<b>FIGURE 00</b>	TABLE OF CONTENTS
<b>FIGURE 01</b>	HOPPER AND PAD INSTALLATION
<b>FIGURE 02</b>	FEED WHEEL PAD HOUSING INSTALLATION
<b>FIGURE 03</b>	PAD HOUSING ASSEMBLY
<b>FIGURE 04</b>	KNOB GUIDE ASSEMBLY
<b>FIGURE 05</b>	PAD ADJUSTING STUD ASSEMBLY
<b>FIGURE 06</b>	1.5 INCH LINER TYPE PAD BACKUP ASSEMBLY

**GROUP 50 AIR MOTOR AND AIR INLET INSTALLATION**

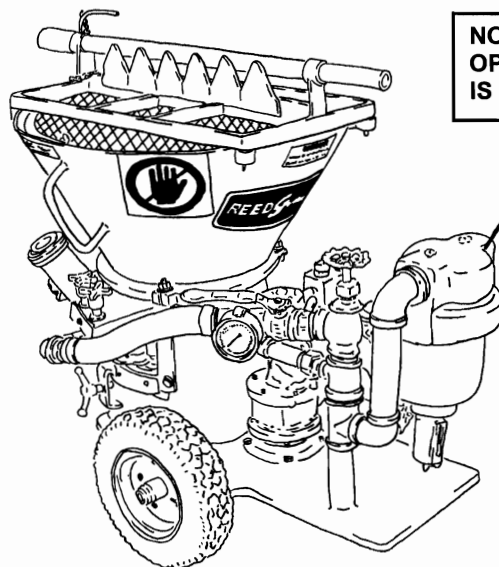
<b>FIGURE 00</b>	TABLE OF CONTENTS
<b>FIGURE 01</b>	AIR MOTOR AND AIR INLET INSTALLATION
<b>FIGURE 02</b>	AIR MOTOR ASSEMBLY
<b>FIGURE 03</b>	AIR INLET ASSEMBLY
<b>FIGURE 04</b>	AIR FILTER ASSEMBLY

**GROUP 60 ACCESSORIES INSTALLATION**

<b>FIGURE 01</b>	ACCESSORIES INSTALLATION
<b>FIGURE 02</b>	DUSTBAG ASSEMBLY

**GROUP 70 OPTIONAL INSTALLATION**

<b>FIGURE 00</b>	TABLE OF CONTENTS
<b>FIGURE 01</b>	OPTIONAL INSTALLATION
<b>FIGURE 02</b>	1.5 INCH COARSE THREAD PAD BACKUP ASSEMBLY
<b>FIGURE 03</b>	1.25 INCH COARSE THREAD PAD BACKUP ASSEMBLY



**I. PURPOSE**

This parts manual is prepared, issued and/or revised by **REED** Manufacturing, for the exclusive use of its customers and is intended for use in provisioning, requisitioning, storing and issuing replaceable **REED** model **SOVA™ SERIES 7 PNEUMATIC SPRAYING MACHINE**. The contents are proprietary to **REED** and are subject to change without notice. The use of any part of this document by any other person or persons or for any other purpose without the written consent of **REED** is expressly prohibited. In addition, **REED** expressly disclaims any and all responsibility arising in or any way related to such **REED's** prior written consent thereto.

The parts number content of this document, arrangement and breakdown sequence of items is compatible with Military Standard (**MS**) and Air Transport Association Specification (**ATA**).

**II. GENERAL SYSTEM OF ASSEMBLY ORDER – Detailed Parts List (Refer to Next Page)**

1. This area refers to the corresponding illustration

**MODEL – GROUP – FIGURE – PAGE**

**A. MODEL** shows which is **REED's** model number.

**B. GROUP** should be divided with:

<b>00</b>	<b>MODEL SOVA™ SERIES 7 ILLUSTRATED PARTS MANUAL</b>
<b>10</b>	<b>FINAL INSTALLATION</b>
<b>30</b>	<b>BASE GEAR INSTALLATION</b>
<b>40</b>	<b>HOPPER AND PAD INSTALLATION</b>
<b>50</b>	<b>AIR MOTOR AND AIR INLET INSTALLATION</b>
<b>60</b>	<b>ACCESSORIES INSTALLATION</b>
<b>70</b>	<b>OPTIONAL INSTALLATION</b>

**C. FIGURE** belong to the group. Please see page of contents and each group.

**D. PAGE** numbers follow to the right of each figure number.


2. The **ITEM NUMBER** corresponds to the item number shown for the part in illustration. Parts with item number proceeded by a dash (such as: -1, -5, -12 etc.) are not illustrated.

3. **PARTS NUMBERS** that carry a **REED** part number.



# SOVA SERIES 7 PNEUMATIC SPRAYING MACHINE HOW TO USE PARTS MANUAL

SOVA  
PARTS  
GROUP 00  
FIGURE 01  
PAGE 02



## HYDRAULIC PUMPING ASSEMBLY

SOVA™  
PARTS  
GROUP 00  
FIGURE 06  
PAGE 02

ITEM NO.	REED'S PARTS NO.	DESCRIPTION					QTY
		1	2	3	4	5	
-1	M-06	Assembly, Hydraulic Pumping (See Group 20, Figure 01 for NHA)					Ref
2	78154	• Cup, Piston					2
3	78444	• Coupler					2
4	78352	• Coupling, Dog type					4
5		• Bolt 1/2 x 4 (attaching parts)					8
6		• Nut, 1/2 (attaching parts)					8
7	78443	• Bone, Dog					2
8		• Bolt 5/8 x 2					6
9	78442	• Coupler					2
10	78438	• Assembly, Hydraulic Cylinder (See Group 60, Figure 07 for DET)					1
11		• Nut (attaching parts)					16
12		• Washer (attaching parts)					16
13	77617	• Bolt (attaching parts)					16
14		• Elbow, 90 F56M02-16-16					4
15	79343	• Assembly, Hose					2
16	78593	• Fitting, MiniCheck (Port)					2
17		• Elbow, 90 F56M02-06-06					4
18		• Fitting, STR F56-00-06-06					4
19	79344	• Assembly, Hose					2
20		• Elbow, 90 F56M01-06-06					4
21		• Valve, Check					4
22		• Elbow, 90 MBMBW0-06-06					4
23		• Clamp					3
24	79326	• Tube, Wire					1
25	79345	• Assembly, Tube					2
26	78417	• Cable					2
27	72010	• Lum, 1/2 Flex					A/R
28		• Pin, 1/4 x 20					4
29	79285	• Cover, Proximity Switch					2
30	78416	• Switch, Proximity					2
31	79327	• Plate, End					1
32		• Washer, 1 Lock (attaching parts)					8
33		• Bolt, 1 x 2 Course (attaching parts)					8

DASH (-) ITEM NOT ILLUSTRATED

REVISION:



**SOVA SERIES 7 PNEUMATIC SPRAYING MACHINE  
HOW TO USE PARTS MANUAL**

**SOVA  
PARTS  
GROUP 00  
FIGURE 01  
PAGE 03**

**4. DESCRIPTION**

**A.** The **INDENTURE SYSTEM** used in the parts list shows the relationship of one part to another. For a given item, the number of indentures depicts the relationship of the item to the components of the item as follows:

**1 2 3 4 5**

**Assembly (or Installation)**

- **Detail part of assembly**
- **Sub-assembly**
- **Attaching parts for sub-assembly**
- • **Detail part of sub-assembly**
- • **Sub-sub-assembly**
- • **Attaching parts for sub-sub-assembly**
- • • **Detail part of sub-sub-assembly**
- • • **Sub-sub-sub-assembly**
- • • **Attaching parts of sub-sub-sub-assembly**
- • • • **Detail part of sub-sub-sub-assembly**

**B.** “See Group 20, Figure 01 For **NHA**”

Identifies the illustrated parts chapter location; indicates where the Next Higher Assembly (**NHA**) of the item shown.

**C.** “See Group 60, Figure 07 For **DET**”

Identifies the illustrated parts chapter location; indicates where the item and its Detailed Breakdown (**DET**) is shown.

**D.** “See Group 30, Figure 05 for **REF**” or “See Vendor Chapter For **REF**”

Identifies the illustrated parts chapter where the part is, and if listed and illustrated in Vendor Chapter. It is used as a cross-reference (**REF**).

**5. QUANTITY**

**A.** Reference (**REF**) indicates the items that is listed previously in the Next Higher Assembly (**NHA**) and then again in this figure.

**B.** As Required (**AR**) indicates the parts that is used in a quantity as required.

**C.** A number entry indicates the quantity of the part used in its next higher application.

**6.** Functionally related assemblies are illustrated in phantom ( \_\_\_\_\_ ) but not listed on the detail parts list page.



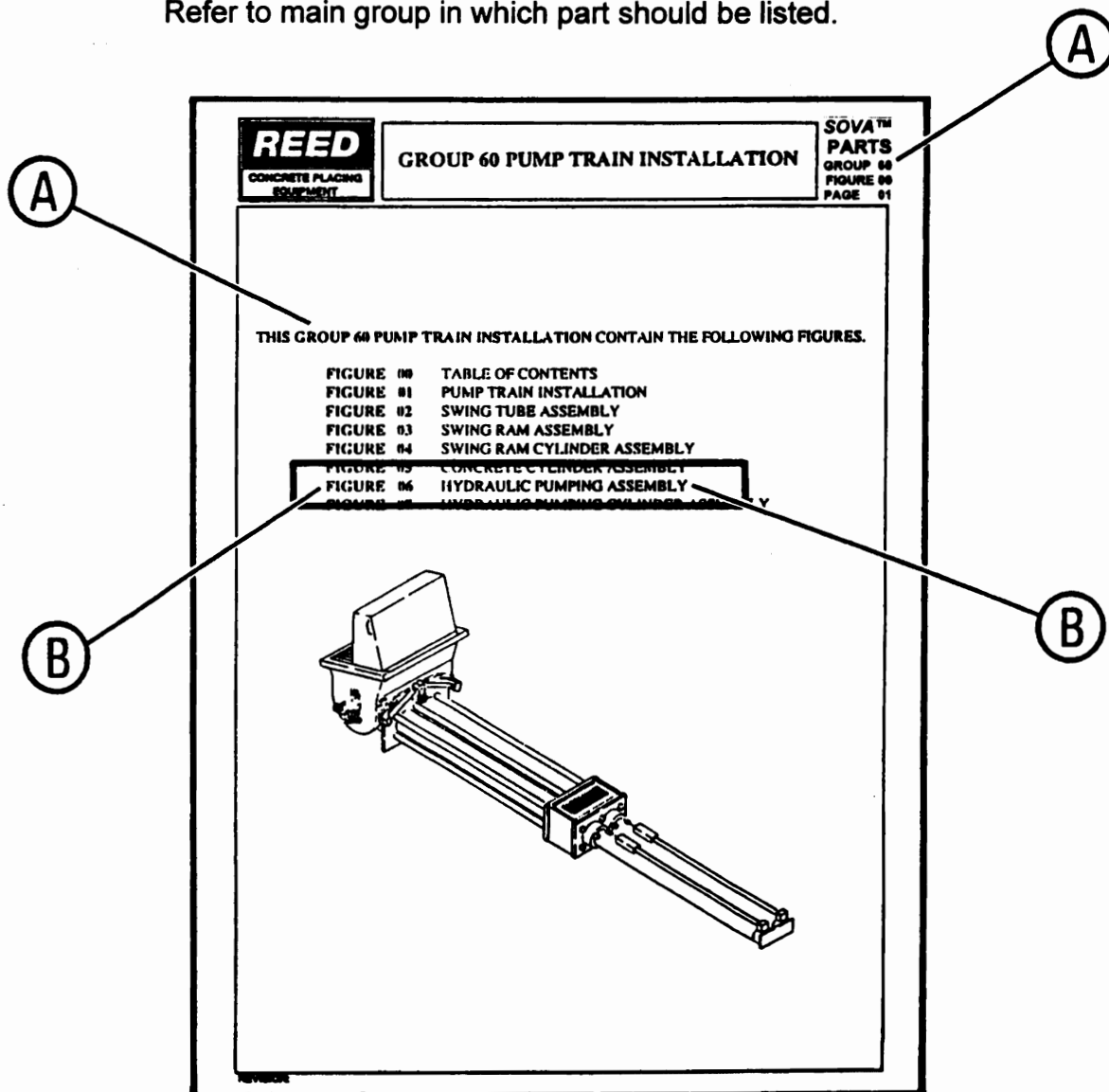
# SOVA SERIES 7 PNEUMATIC SPRAYING MACHINE HOW TO ORDER PARTS

SOVA  
PARTS  
GROUP 00  
FIGURE 02  
PAGE 01

1. Always give serial number of *PNEUMATIC SPRAYING MACHINE MODEL SOVA™ SERIES 7* (Refer to each unit nameplate shown below). NOTE: This manual is being released to cover unit starting with serial number **00-3680-SR7** to current production. Some components used on earlier units differ from current productions. Where this occurs, the part is identified by a serial number.

<b>REED</b>		U.S. PAT. 5,150,991		<b>CE</b>
13822 OAKS AVENUE CHINO, CA 90710 USA		5,645,379 AND PATS. PENDING		
MODEL NO.	_____			
SERIAL NO.	_____			
HP	_____	VOLTAGE	_____	
HZ	_____	AMPS	_____	

2. Always specify part number and complete name of parts ordered.
  - A. Turn to table of content in the desired Installation. Refer to main group in which part should be listed.



**REED**  
CONCRETE PLACING EQUIPMENT

**HYDRAULIC PUMPING ASSEMBLY**

SOVA™  
PARTS  
GROUP 00  
FIGURE 02  
PAGE 01

FLUSH BOX  
WELDMENT REF.  
(P/N: 78453)

**REED**  
CONCRETE PLACING EQUIPMENT

**HYDRAULIC PUMPING ASSEMBLY**

SOVA™  
PARTS  
GROUP 00  
FIGURE 02  
PAGE 02

ITEM NO.	REED'S PARTS NO.	DESCRIPTION	QTY
1	60346	Assembly, Hydraulic Pumping (See Group 20, Figure 1 for NIA)	1
2	78154	* Cap, Piston	2
3	78444	* Coupler	2
4	78152	* Crimping Plug for	4
5		* Nut, 1/2 x 4 (attaching parts)	8
6		* Nut, 1/2 (attaching parts)	8
7	78441	* Flange, 1 In.	2
8		* Bolt, 5/8 x 2	6
9	78442	* Coupler	2
10	78416	* Assembly, 1 Hydraulic Cylinder (See Group 08, Figure 07 for DET)	1
11		* Nut (attaching parts)	16
12		* Washer (attaching parts)	16
13	77617	* Nut (attaching parts)	16
14		* Bolt, 1/2 (attaching parts)	4
15	79141	* Assembly, 1 In.	2
16	78591	* Flange, 1 In. (Part)	2
17		* Bolt, 1/2 (attaching parts)	4
18		* Nut, 1/2 (attaching parts)	4
19	79144	* Assembly, 1 In.	2
20		* Nut, 1/2 (attaching parts)	4
21		* Washer, 1 In. (attaching parts)	4
22		* Bolt, 1/2 (attaching parts)	4
23		* Coupler	1
24	79126	* Tube, Wire	1
25	79143	* Assembly, Tube	2
26	78417	* Cable	2
27	75010	* Lock, 1/2 Flange	4/8
28		* Pin, 1/4 x 2 1/2	4
29	78416	* Assembly, 1 Hydraulic Cylinder	2
30	78416	* Assembly, 1 Hydraulic Cylinder	2
31	78453	* Flange, 1 In. (Part)	2
32		* Washer, 1 In. (attaching parts)	8
33		* Bolt, 1/2 x 2 (attaching parts)	8

UNLESS OTHERWISE SPECIFIED

- B. Find title of figure in which the part should be shown. Note figure number.
- C. Turn to corresponding page, find the group and figure.
- D. Check your required part and its attaching parts and match with illustration page.
- E. Refer to corresponding item number in the part list page. Part numbers are located in the part number column.
- F. When ordering variable or optional miscellaneous parts which are not found this in parts chapter, follow the above outlined procedure of how to order parts.
  - 1). When applicable, give model and serial number of the component for which parts are desired.
  - 2). In a specific, difficult to describe situation, a marked-up photograph or detailed sketch would be helpful.



**SOVA SERIES 7 PNEUMATIC SPRAYING MACHINE  
HOW TO ORDER PARTS**

**SOVA  
PARTS  
GROUP 00  
FIGURE 02  
PAGE 03**

3. Do not designate quantity by "set". State specifically how many parts are wanted.

4. Always give complete address and full shipping instructions. Specify shipping instructions, truck freight, air freight, United Parcel Service (UPS), or FedEx and DHL are available in designated areas.

**5. TO ORDER**

**A. BY MAIL**

Attention: Parts Department

**REED**

13822 Oaks Avenue  
Chino, CA. 91710

**B. BY FAX**

(909) 287 - 2141

**C. BY PHONE**

(909) 287 - 2100

6. Parts return without authorization will not be accepted. If it is necessary to return parts for any reason, written authorization may be obtained from **REED** Parts Department, Chino, CA. 91710. A Parts Return Authorization form is provided when **REED** deems its necessary to have the part returned for evaluation. The form is issued by the Warranty of Parts Department of **REED**.

A. The form will be filled by **REED** unless requesting necessary information and you will receive a copy as well as shipping tag.

B. Attach shipping tag to part insert return original invoice.

C. Ship part to **REED PREPAID**.

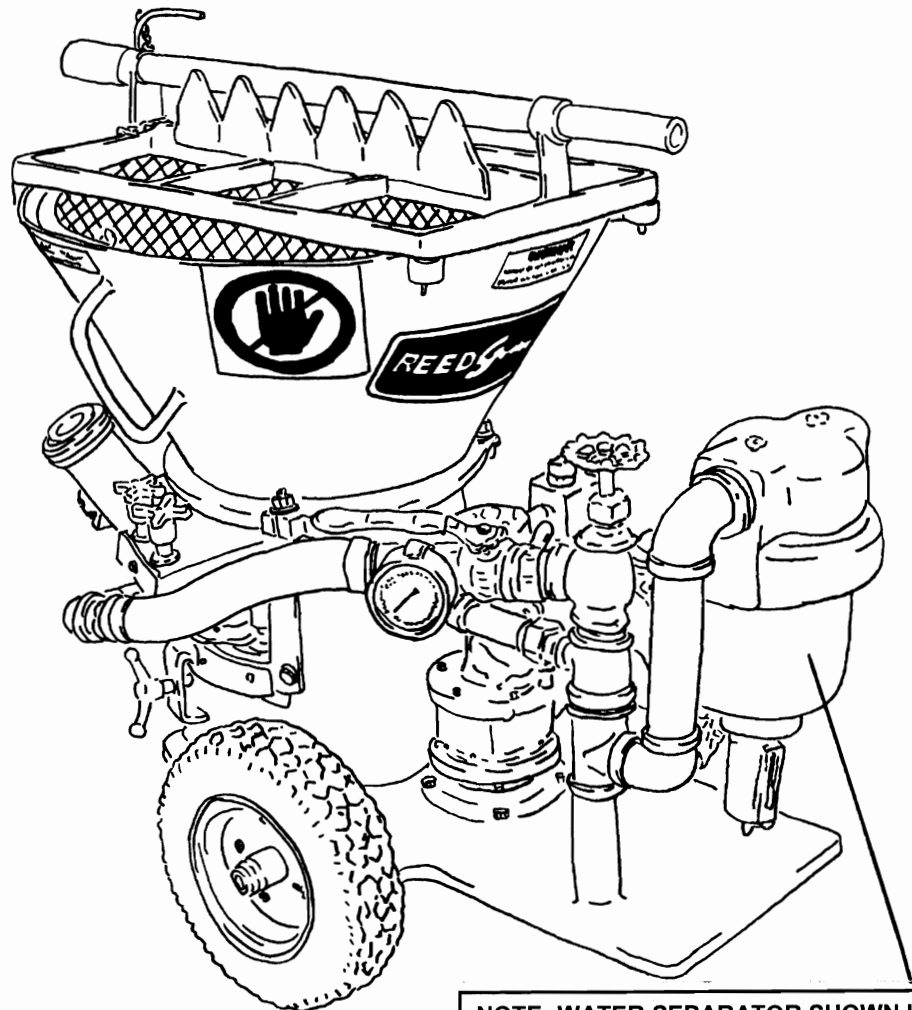
D. Part must be returned to **REED** within 30 days from date of authorization.

REVISION:



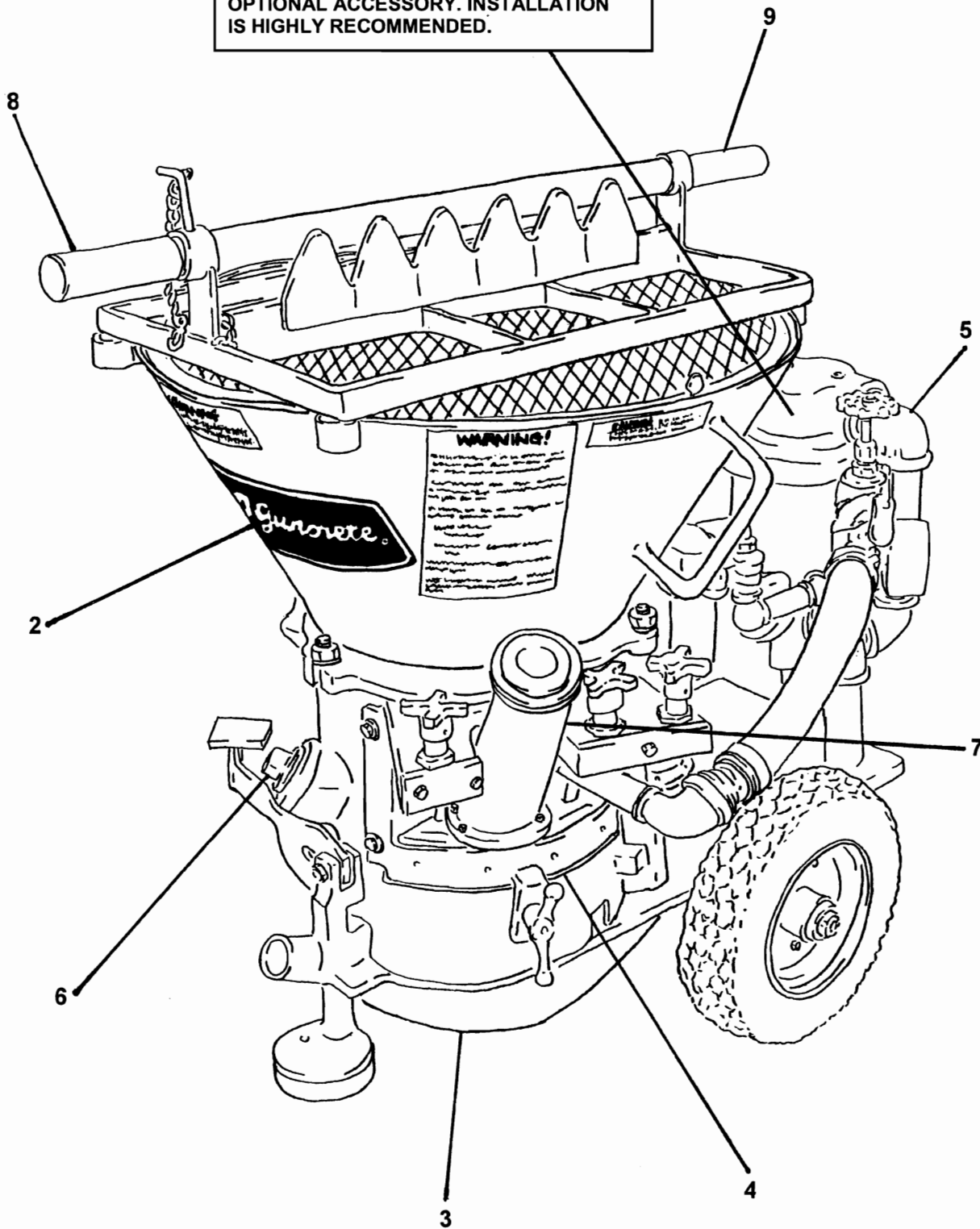
**REED PNEUMATIC SPRAYING MACHINE MODEL SOVA SERIES 7  
ILLUSTRATED PARTS MANUAL GROUP 10 FINAL INSTALLATION  
CONTAINS THE FOLLOWING FIGURES:**

- FIGURE 00** TABLE OF CONTENTS
- FIGURE 01** FINAL INSTALLATION
- FIGURE 02** DECAL ASSEMBLY



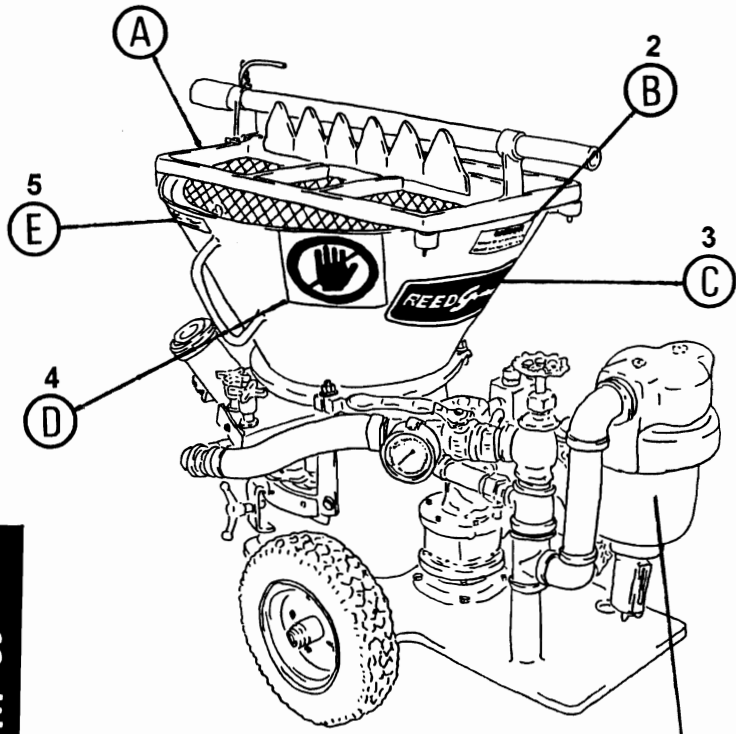
**NOTE: WATER SEPARATOR SHOWN IS AN  
OPTIONAL ACCESSORY. INSTALLATION  
IS HIGHLY RECOMMENDED.**

NOTE: WATER SEPARATOR SHOWN IS AN  
OPTIONAL ACCESSORY. INSTALLATION  
IS HIGHLY RECOMMENDED.



ITEM NO.	REED'S PARTS NO.	DESCRIPTION					QTY
		1	2	3	4	5	
-1	<b>SOVA-V06</b>	Installation, <b>SOVA™ SERIES 6</b> Final					Ref
2	20434	• Assembly, Decal (See Group 10, Figure 02 for DET)					1
3	30-01	• Installation, Base Gear (See Group 30, Figure 01 for DET)					1
4	40-01	• Installation, Hopper and Pad (See Group 40, Figure 01 for DET)					1
5	50-01	• Installation, Air Motor and Air Inlet (See Group 50, Figure 01 for DET)					1
6	60-01	• Installation, Accessories (See Group 60, Figure 01 for DET)					1
7	70-01	• Installation, Optional (See Group 70, Figure 01 for DET)					1
8	10899	• Grip, Handle					1
9	10914	• Handle, 35"					1

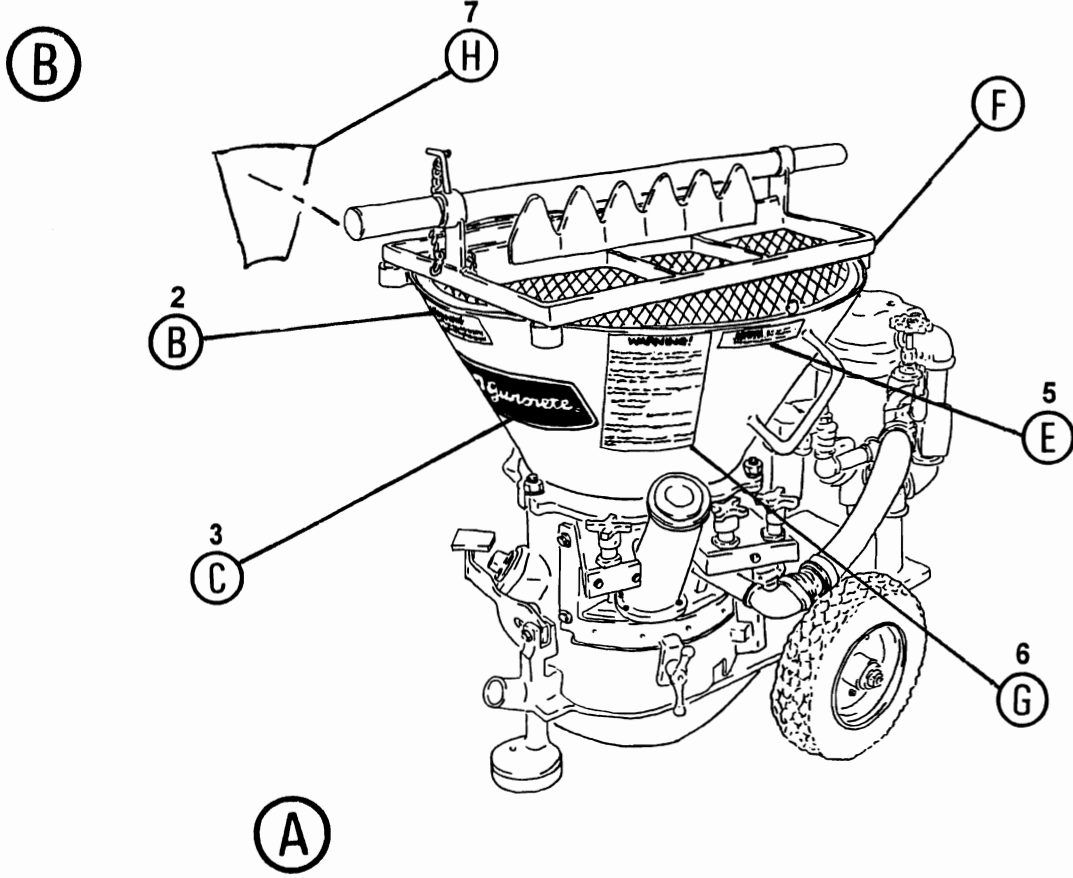
DASH (-) ITEM NOT ILLUSTRATED



**WARNING**  
ALWAYS WEAR SAFETY GLASSES  
WHEN OPERATING THIS MACHINE

NOTE: WATER SEPARATOR SHOWN IS AN  
OPTIONAL ACCESSORY. INSTALLATION  
IS HIGHLY RECOMMENDED.

2





# DECAL ASSEMBLY

SOVA™  
PARTS  
GROUP 10  
FIGURE 02  
PAGE 02



3



ITEM NO.	REED'S PARTS NO.	DESCRIPTION					QTY
		1	2	3	4	5	
-1	20434	Assembly, Decal (See Group 10, Figure 01 for NHA)					Ref
2	10838	• Decal, <b>WARNING</b> , Safety Glasses					2
3	10833	• Decal, <b>REED Guncrete</b>					2
4	75005	• Decal, <b>DANGER</b> , Do not Put Your Hands					2
5	10842	• Decal, <b>CAUTION</b> , Do Not Lift this Machine by Hopper Handle					4
6	10839	• Decal, <b>WARNING</b> , The Wear Pad Area of this Machine is					2
7	10840	• Decal, <b>WARNING</b> , The Inside Hopper of this Machine has					2
8	13095	• Nameplate, Guns Serial Number					1

DASH (-) ITEM NOT ILLUSTRATED



4

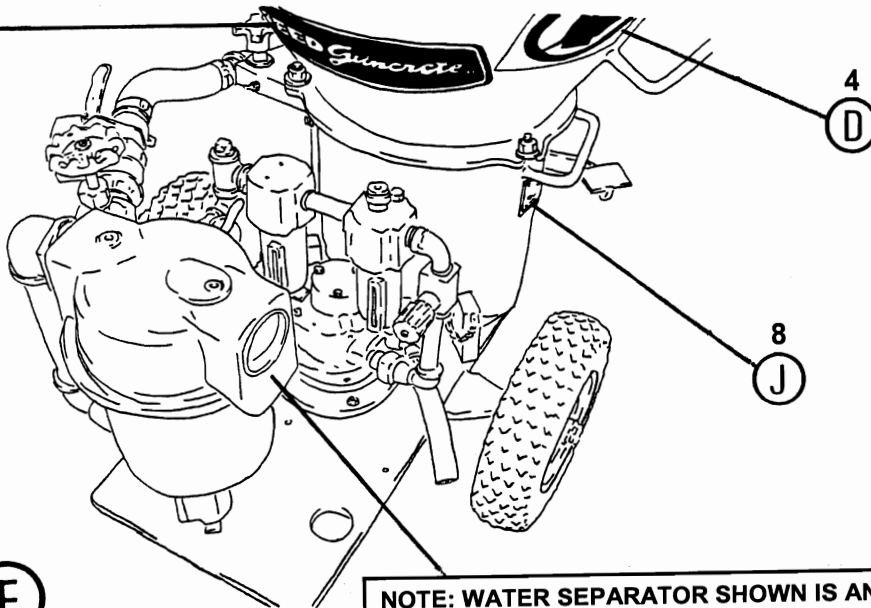
(D)

**CAUTION** DO NOT LIFT  
THIS MACHINE BY HOPPER HANDLES.  
USE SLINGS UNDER MACHINE.

5

(E)

REF3



NOTE: WATER SEPARATOR SHOWN IS AN  
OPTIONAL ACCESSORY. INSTALLATION  
IS HIGHLY RECOMMENDED.

# WARNING!

The wear pad area of this machine is extremely dangerous when the wear pad and Pad back-up assembly are removed.

It is essential that strict safety procedures be followed before performing any work in the wear pad area.

If maintenance must be performed in this area then proceed as follows:

- (1) Shut off power.  
Air / electric
- (2) Disconnect air feed line or electric cord.

Work in the wear pad area can now be performed safely.

Upon completion of this work, reconnect air feed line or electric cord, and restore power.

Ⓒ

6

# WARNING!

The inside of the hopper of this machine has moving parts which are extremely dangerous.

It is essential that strict safety procedures be followed before any work is done inside the hopper.

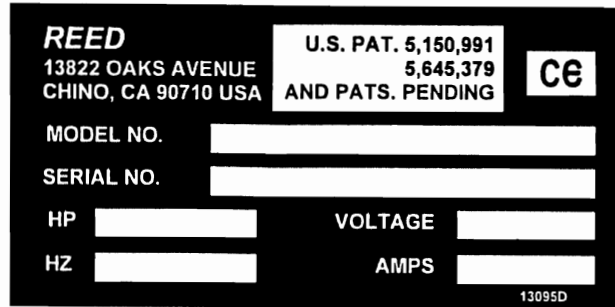
The screen on the hopper is bolted in a closed position to restrict access. If maintenance must be performed inside the hopper, proceed as follows:

- (1) Shut off power.  
air / electric
- (2) Disconnect air feed line or electrical cord.
- (3) Remove bolts securing the hopper screen

Work inside the hopper may now be performed safely.

Upon completion of this work, replace the bolts and secure the hopper screen in a closed position. Reconnect air feed line or electrical cord and restore power.





ⓐ

8

ITEM NO.	REED'S PARTS NO.	DESCRIPTION					QTY
		1	2	3	4	5	
-1	20434	Assembly, Decal (See Group 10, Figure 01 for NHA)					Ref
2	10838	• Decal, <b>WARNING</b> , Safety Glasses					2
3	10833	• Decal, <b>REED Guncrete</b>					2
4	75005	• Decal, <b>DANGER</b> , Do not Put Your Hands					3
5	10842	• Decal, <b>CAUTION</b> , Do Not Lift this Machine by Hopper Handle					2
6	10839	• Decal, <b>WARNING</b> , The Wear Pad Area of this Machine is					1
7	10840	• Decal, <b>WARNING</b> , The Inside Hopper of this Machine has					1
8	13095	• Nameplate, Guns Serial Number (not included in kit - must be stamped if ordered)					

DASH (-) ITEM NOT ILLUSTRATED



**SOVA SERIES 7 PNEUMATIC SPRAYING MACHINE  
ILLUSTRATED PARTS BREAKDOWN**

**SOVA  
PARTS  
GROUP 10  
FIGURE 03  
PAGE 01**

THIS PAGE INTENTIONALLY LEFT BLANK.

**REVISION:**

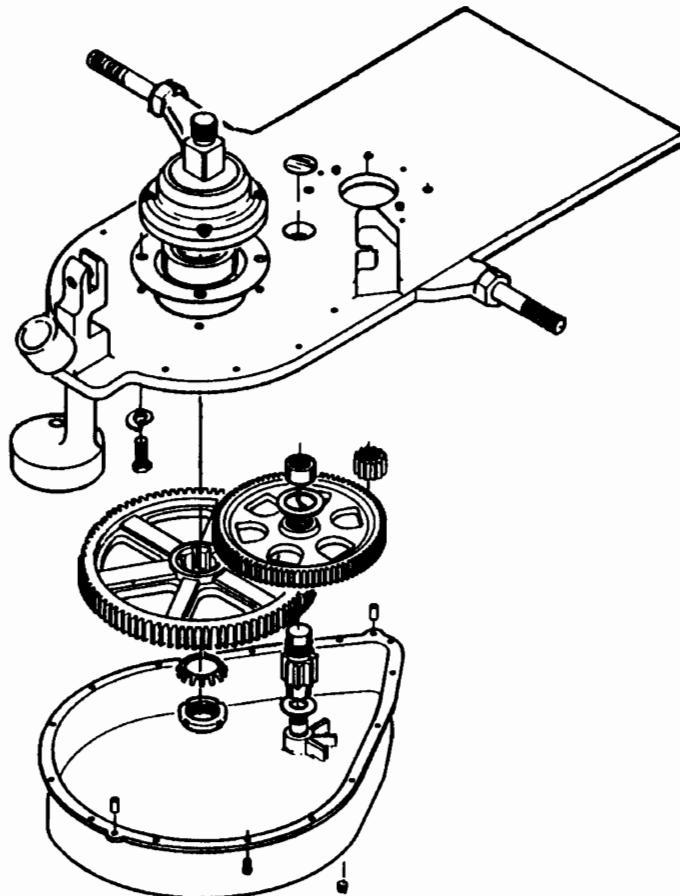


**SOVA SERIES 7 PNEUMATIC SPRAYING MACHINE  
GROUP 30 BASE GEAR INSTALLATION**

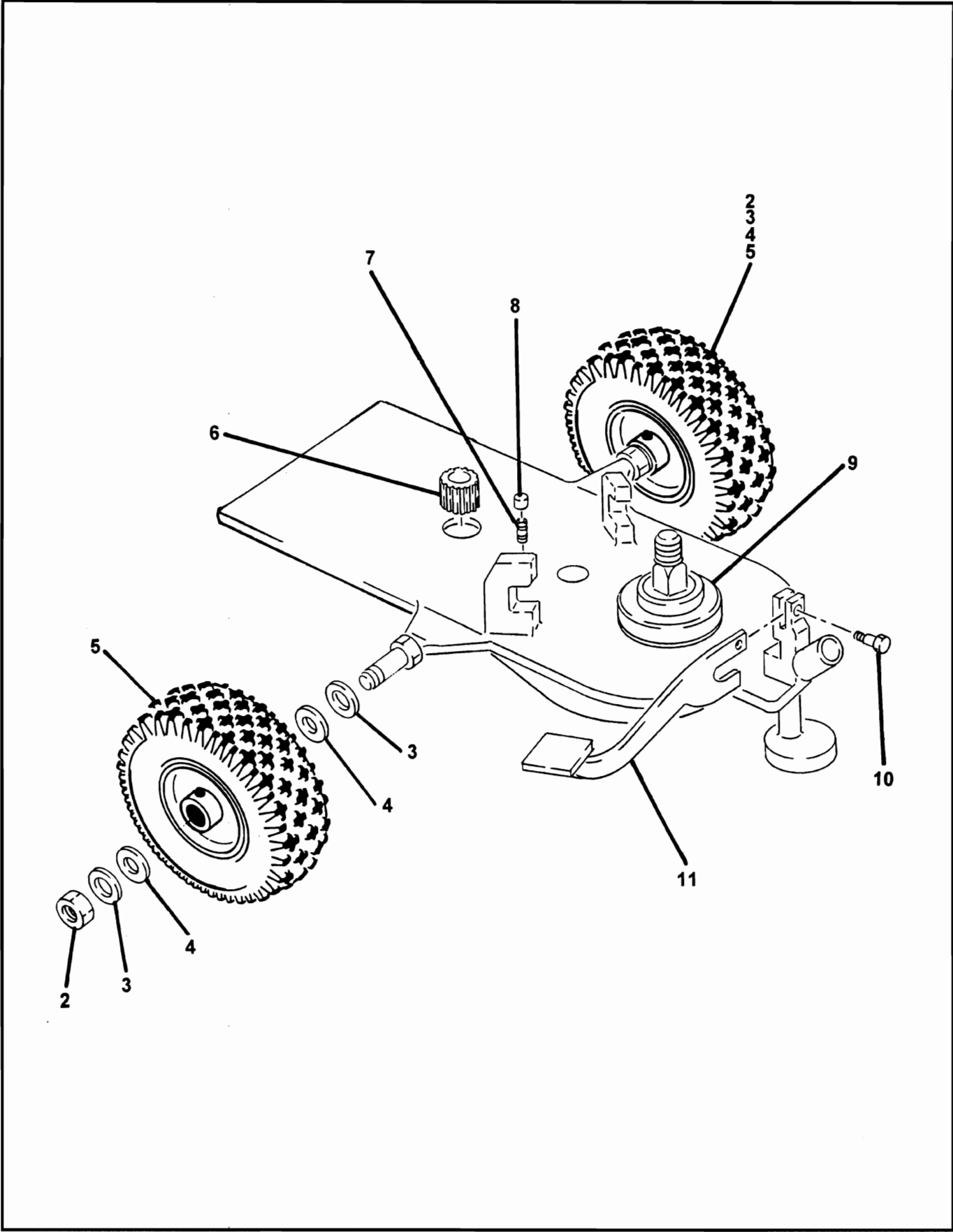
**SOVA  
PARTS  
GROUP 30  
FIGURE 00  
PAGE 01**

**REED PNEUMATIC SPRAYING MACHINE MODEL SOVA SERIES 7  
ILLUSTRATED PARTS MANUAL GROUP 30 BASE GEAR INSTALLATION  
CONTAINS THE FOLLOWING FIGURES:**

- FIGURE 00** TABLE OF CONTENTS
- FIGURE 01** BASE INSTALLATION
- FIGURE 02** BASE GEAR ASSEMBLY
- FIGURE 03** DRIVE SPINDLE ASSEMBLY



## BASE INSTALLATION




REVISION:



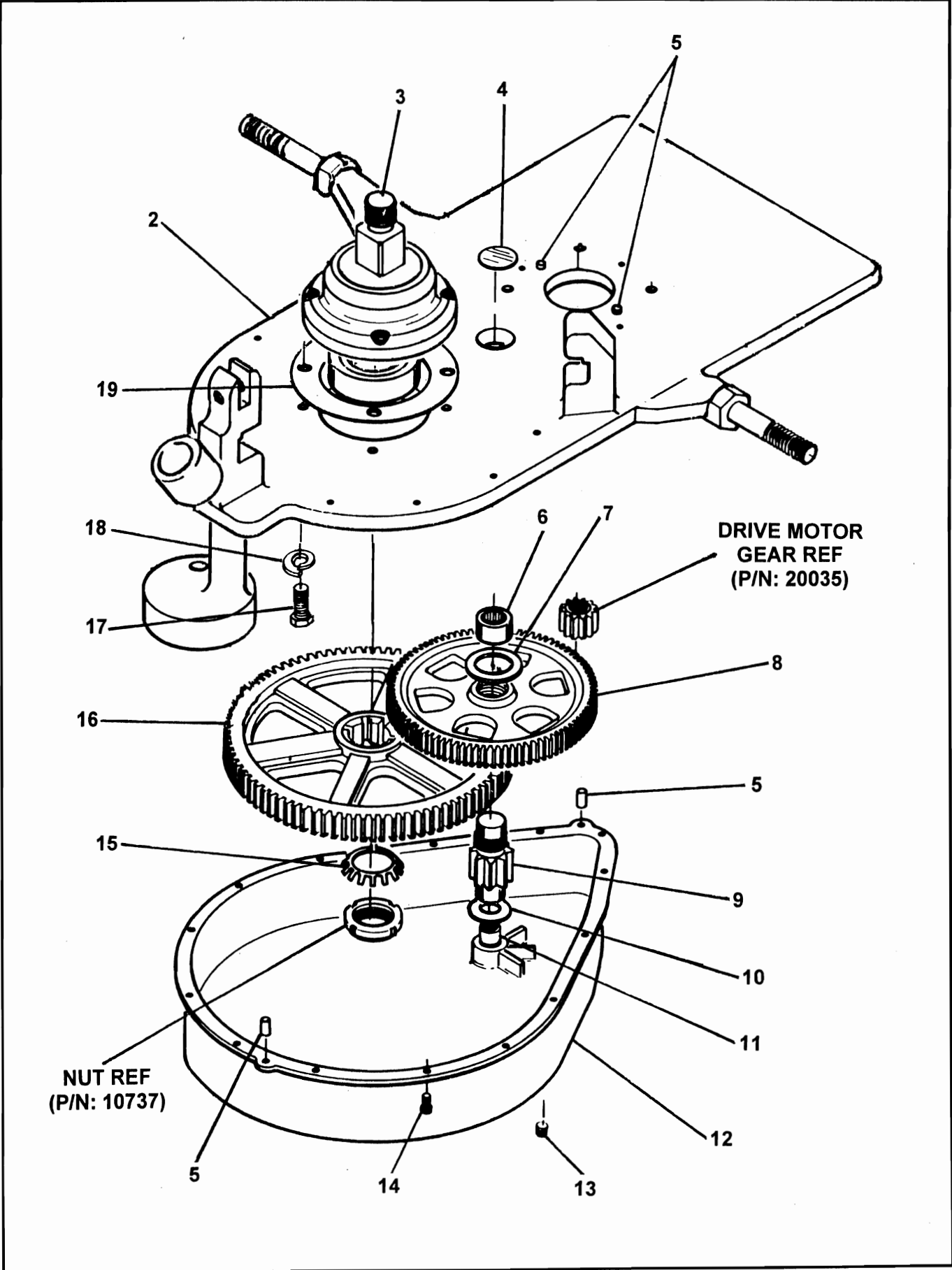
# BASE INSTALLATION

SOVA™  
PARTS  
GROUP 30  
FIGURE 01  
PAGE 02

ITEM NO.	REED'S PARTS NO.	DESCRIPTION					QTY
		1	2	3	4	5	
-1	30-01	Installation, Base (See Group 10, Figure 01 for NHA)					Ref
2	10738	• Nut, Flex Lock					2
3		• Washer, Flat					4
4	10714	• Washer, Felt					4
5	20052	• Assembly, Wheel and Tire					2
-5A	13321	• • Bearing, Wheel					1
6	20035	• Gear, Motor Drive					1
7	10707	• Pipe, Oil Filler					1
8	10706	• Cap, Oil Filler					1
9	20478	• Assembly, Base Gear (See Group 30, Figure 02 for DET) 					1
10	10735	• Bolt, Shoulder					1
11	20058	• Weldment, Kicker					1

DASH (-) ITEM NOT ILLUSTRATED

## BASE GEAR ASSEMBLY



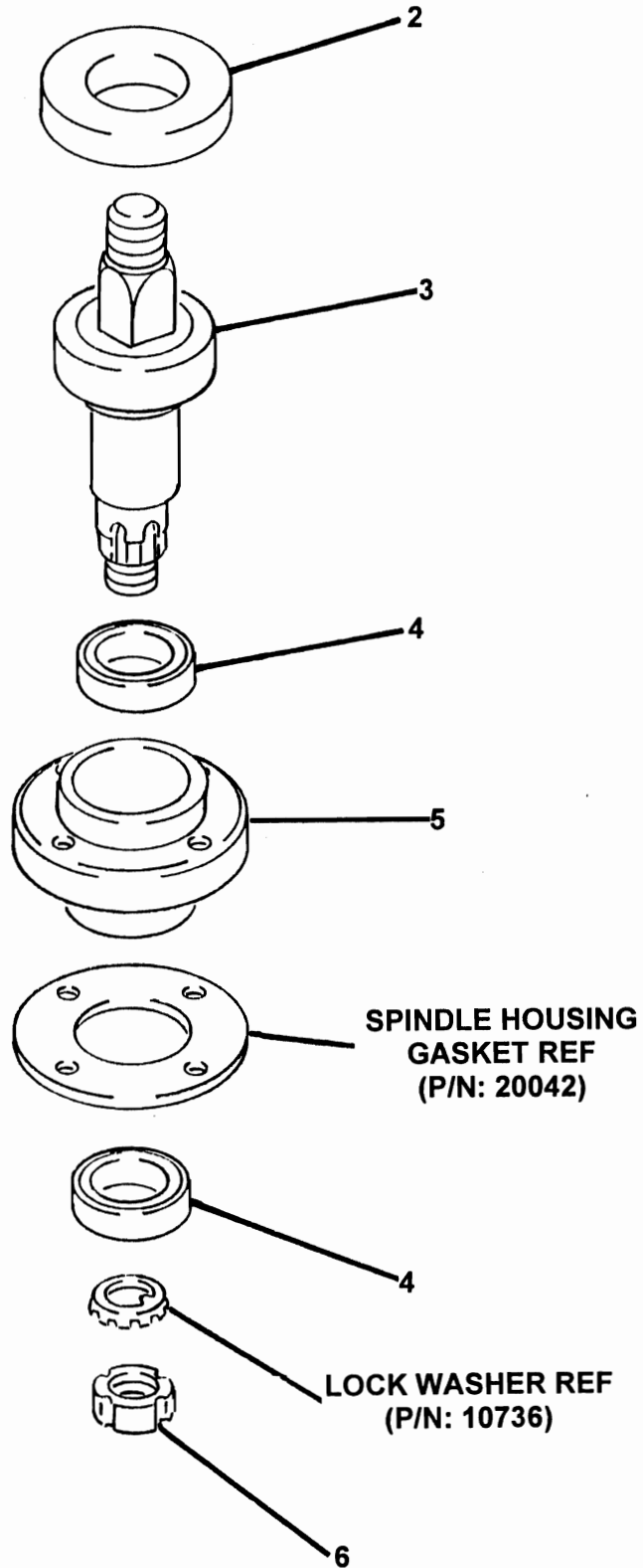


# BASE GEAR ASSEMBLY

SOVA  
PARTS  
GROUP 30  
FIGURE 02  
PAGE 02

ITEM NO.	REED'S PARTS NO.	DESCRIPTION					QTY
		1	2	3	4	5	
-1	20478	Assembly, Base Gear (See Group 30, Figure 01 for NHA)					Ref
2	20476	• Weldment, Base Plate					1
3	20149	• Assembly, Drive Spindle (See Group 30, Figure 03 for DET)					1
4	20411	• Cover, Bearing					1
5	80360	• Pin, Dowel					4
6	20036	• Bearing, Top					1
7	20038	• Washer, Thrust					1
8	20034	• Gear, Idler					1
9	20033	• Gear, Idler Pinion					1
10	20039	• Washer, Pan Thrust					1
11	20037	• Bearing, Bottom					1
12	20025	• Pan, Gear					1
13	74745	• Plug, Drain					1
14	80253	• Screw, Gear Pan					14
15	10736	• Washer, Lock					1
16	20030	• Gear, Bull					1
17	80121	• Screw, Hex					4
18	80072	• Washer, Lock					4
19	20042	• Gasket, Spindle Housing					1
DASH (-) ITEM NOT ILLUSTRATED							

REVISION:







# DRIVE SPINDLE ASSEMBLY

SOVA™  
PARTS  
GROUP 30  
FIGURE 03  
PAGE 02

ITEM NO.	REED'S PARTS NO.	DESCRIPTION					QTY
		1	2	3	4	5	
-1	20149	Assembly, Drive Spindle (See Group 30, Figure 02 for NHA)					Ref
2	20029	• Seal, Spindle					1
3	20026	• Hub, Spindle					1
4	20027	• Bearing, Upper Spindle					2
5	20028	• Housing, Spindle					1
6	10737	• Nut, Lock					1

DASH (-) ITEM NOT ILLUSTRATED



**SOVA SERIES 7 PNEUMATIC SPRAYING MACHINE  
ILLUSTRATED PARTS BREAKDOWN**

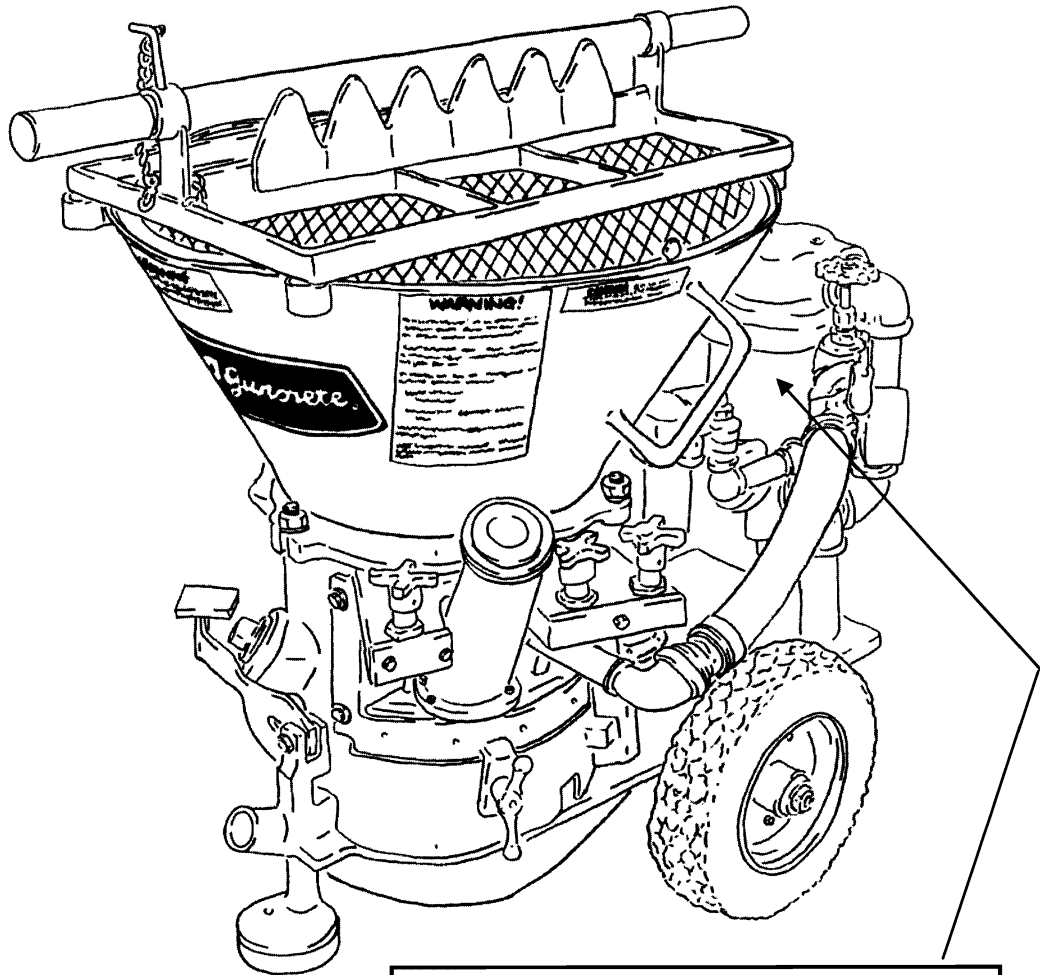
**SOVA  
PARTS  
GROUP 30  
FIGURE 04  
PAGE 01**

THIS PAGE INTENTIONALLY LEFT BLANK.

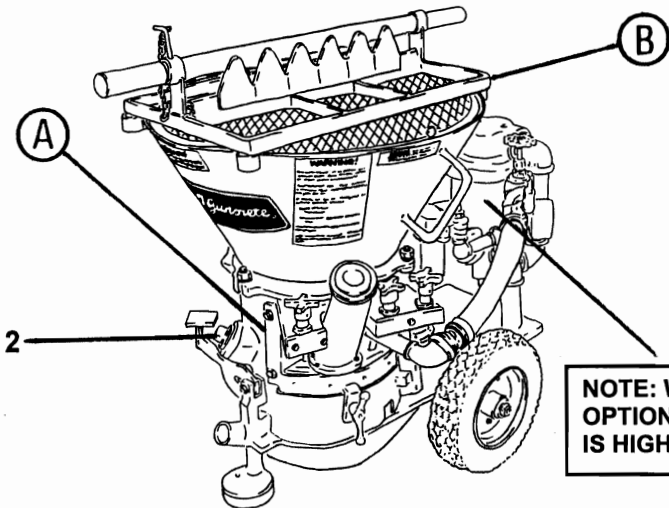
REVISION:

**REED PNEUMATIC SPRAYING MACHINE MODEL SOVA SERIES 7  
ILLUSTRATED PARTS MANUAL GROUP 40 HOPPER AND PAD INSTALLATION  
CONTAINS THE FOLLOWING FIGURES:**

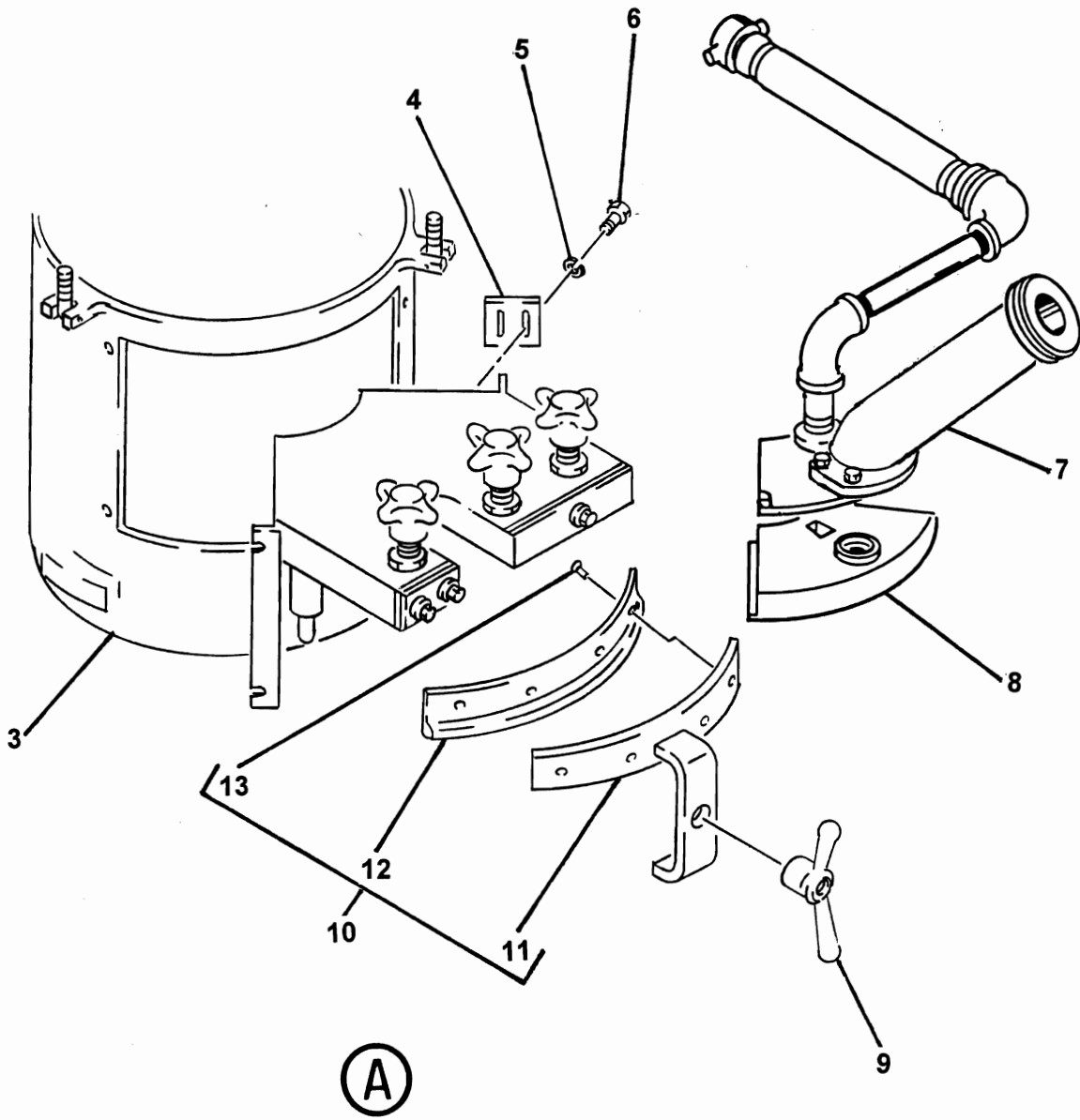
- FIGURE 00** TABLE OF CONTENTS
- FIGURE 01** HOPPER AND PAD INSTALLATION
- FIGURE 02** FEED WHEEL PAD HOUSING INSTALLATION
- FIGURE 03** PAD HOUSING ASSEMBLY
- FIGURE 04** KNOB GUIDE ASSEMBLY
- FIGURE 05** PAD ADJUSTING STUD ASSEMBLY
- FIGURE 06** 1.5 INCH LINER TYPE PAD BACKUP ASSEMBLY



**NOTE: WATER SEPARATOR SHOWN IS AN  
OPTIONAL ACCESSORY. INSTALLATION  
IS HIGHLY RECOMMENDED.**



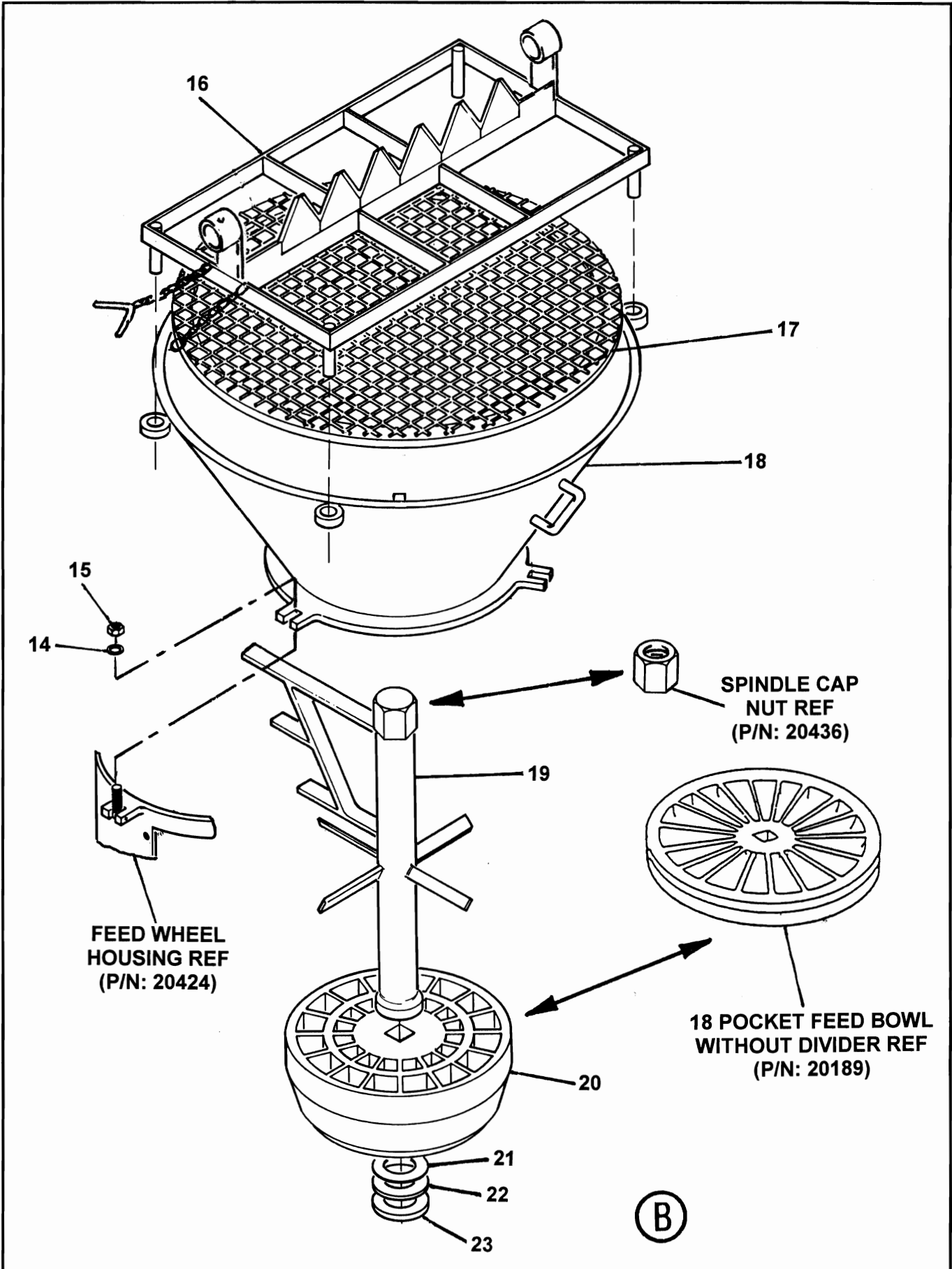
NOTE: WATER SEPARATOR SHOWN IS AN OPTIONAL ACCESSORY. INSTALLATION IS HIGHLY RECOMMENDED.



(A)

ITEM NO.	REED'S PARTS NO.	DESCRIPTION					QTY
		1	2	3	4	5	
-1	40-01	Assembly, Hopper and Pad (See Group 10, Figure 01 for NHA)					Ref
2	11005	• Plug, Pipe					1
3	20422	• Installation, Feed Wheel pad housing (See Group 40, Figure 02 for DET)					1
4	20388	• Shear, Rock					1
5		• Washer, Flat (attaching parts)					2
6		• Bolt, Hex (attaching parts)					2
7	20483-1Y	• Assembly, 1 1/2 Inch Liner Type Pad Backup (See Group 40, Figure 06 for DET)					1
8	20090	• Wearpad, Rubber Mold					1
9	60051	• Nut, Pad Clamp wing					1
10	20430	• Assembly, Pad Clamp					1
11	20432	• • Weldment, Pad Clamp					1
12	20069	• • Rubber, Pad Clamp					1
13	80355	• • Rivet, Pop (attaching parts)					4
14		• Washer, Flat					3
15		• Nut, Hex					3
16	20426	• Weldment, Bag Breaker					1
17	10907	• Weldment, 3/4" Screen					1
18	10907-1 optional 3/4" screen (standard is 20084 5/8" screen)					1	
19	20098	• Weldment, Agitator					1
20	20089	• Bowl, 16 Pocket with Divider Feed					1
21	20172	• Plate, Thin Riser					A/R
22	20173	• Plate, Medium Riser					A/R
23	20174	• Plate, Thick Riser					A/R

DASH (-) ITEM NOT ILLUSTRATED



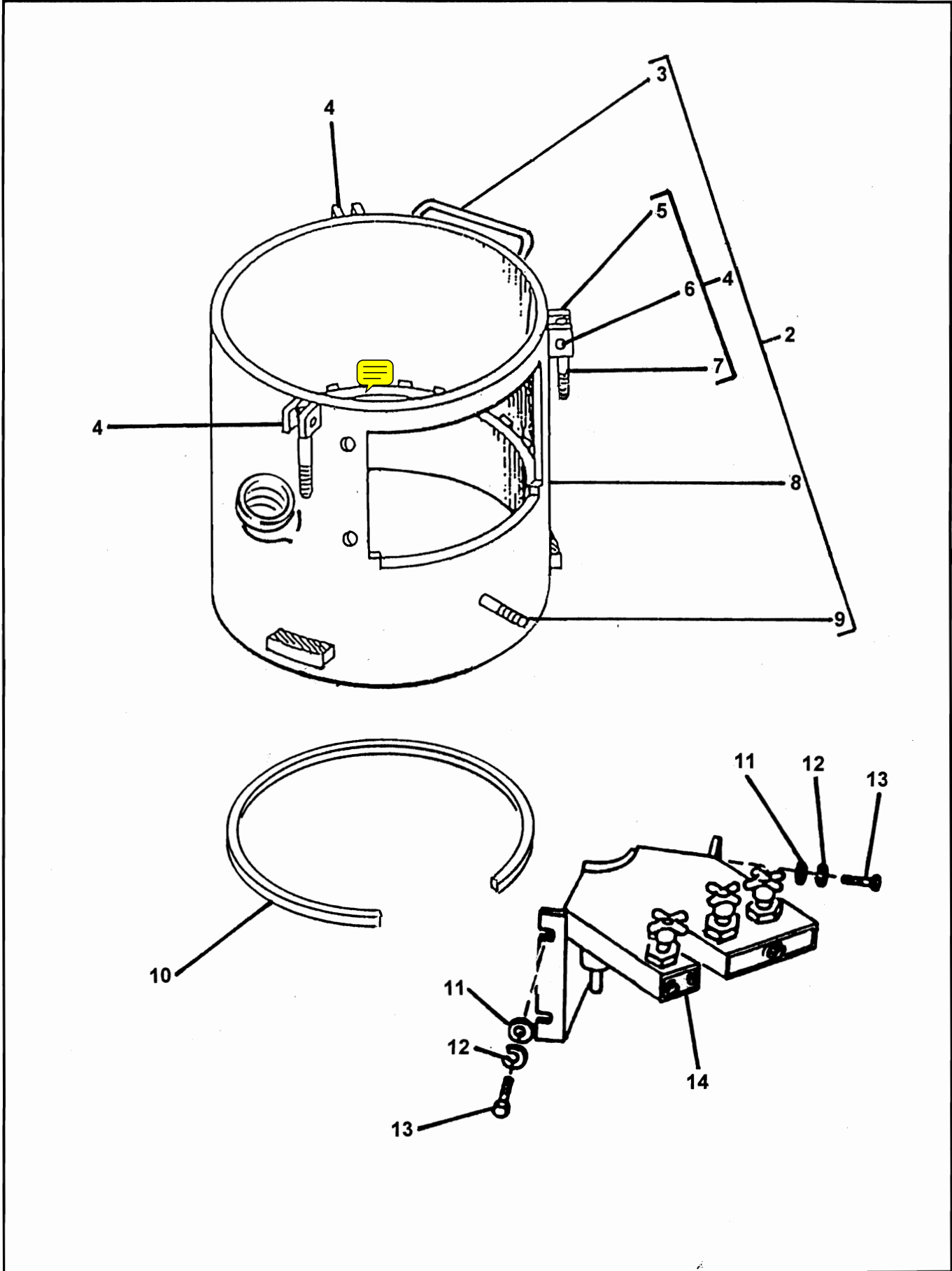
ITEM NO.	REED'S PARTS NO.	DESCRIPTION					QTY
		1	2	3	4	5	
-1	40-01	Assembly, Hopper and Pad (See Group 10, Figure 01 for NHA)					Ref
2	11005	• Plug, Pipe					1
3	20422	• Installation, Feed Wheel pad housing (See Group 40, Figure 02 for DET)					1
4	20388	• Shear, Rock					1
5		• Washer, Flat (attaching parts)					2
6		• Bolt, Hex (attaching parts)					2
7	20483-1Y	• Assembly, 1 1/2 Inch Liner Type Pad Backup (See Group 40, Figure 06 for DET)					1
8	20090	• Wearpad, Rubber Mold					1
9	60051	• Nut, Pad Clamp wing					1
10	20430	• Assembly, Pad Clamp					1
11	20432	• • Weldment, Pad Clamp					1
12	20069	• • Rubber, Pad Clamp					1
13	80355	• • Rivet, Pop (attaching parts)					4
14		• Washer, Flat					3
15		• Nut, Hex					3
16	20426	• Weldment, Bag Breaker					1
17		10907-1 optional 3/4" screen (standard is 20084 5/8" screen)					1
18	20077	• Weldment, Hopper					1
19	20098	• Weldment, Agitator					1
20	20089	• Bowl, 16 Pocket with Divider Feed					1
21	20172	• Plate, Thin Riser					A/R
22	20173	• Plate, Medium Riser					A/R
23	20174	• Plate, Thick Riser					A/R

DASH (-) ITEM NOT ILLUSTRATED



# FEED WHEEL PAD HOUSING INSTALLATION

SOVA™  
PARTS  
GROUP 40  
FIGURE 02  
PAGE 01

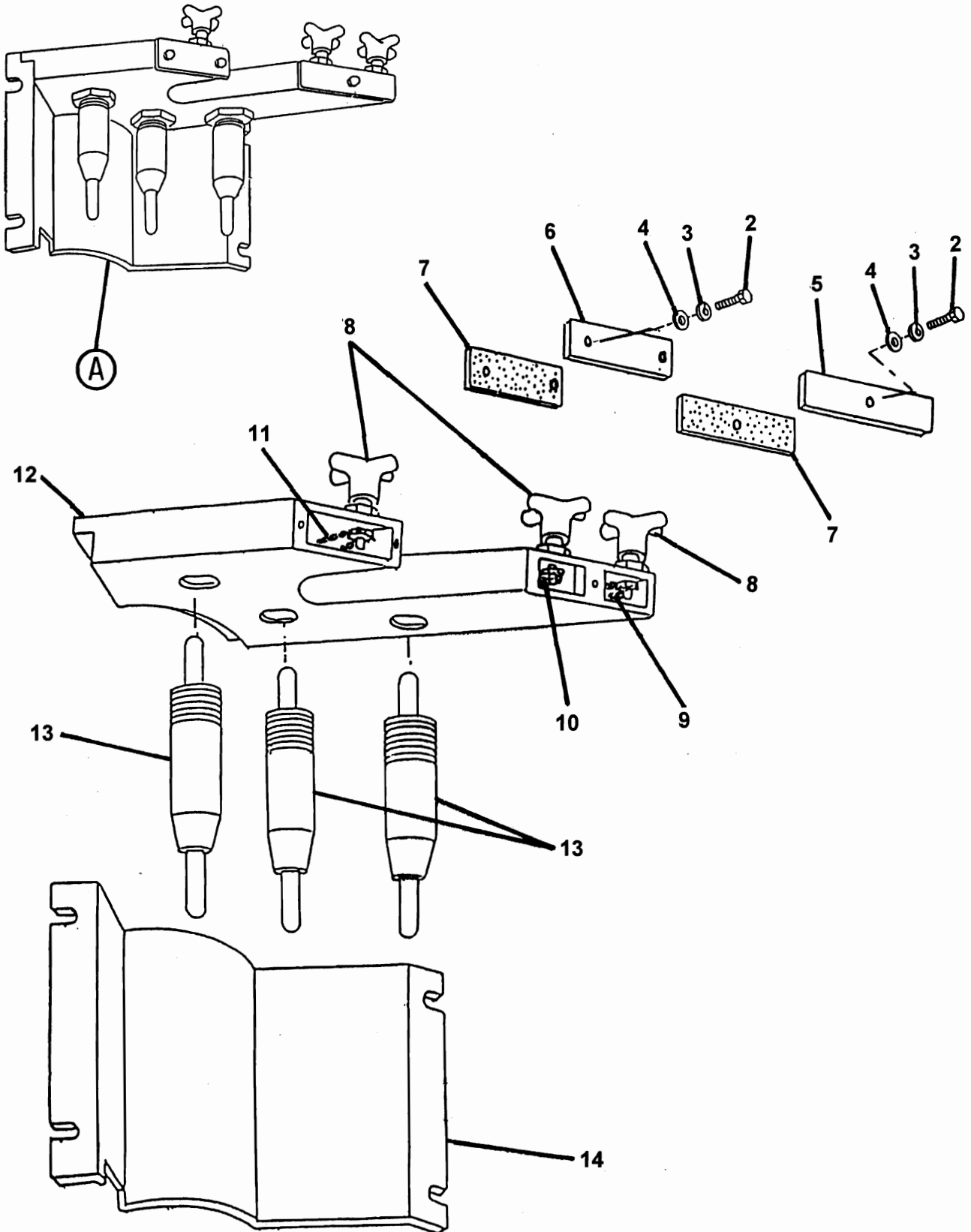




ITEM NO.	REED'S PARTS NO.	DESCRIPTION	QTY
		1 2 3 4 5	
-1	20422	Installation, Feed Wheel Pad Housing (See Group 40, Figure 01 for NHA)	Ref
2	20424	• Assembly, Feed Wheel Housing	1
3	10926	•• Handle, D	1
4	20066	•• Assembly, Swing Bolt	3
5	10927	••• Bracket, Swing Bolt	1
6	80297	••• Pin, Spring	1
7	20154	••• Bolt, Swing	1
8	20423	•• Housing, Feel Wheel	1
9	10928	•• Stud, Clamp	2
10	20158	•• Seal, Felt	1
11	80074	• Washer, Flat	6
12	80044	• Washer, SPL Lock	6
13	80151	• Bolt, Hex	6
14	20155	• Assembly, Pad Housing (See Group 40, Figure 02 for DET)	1

DASH (-) ITEM NOT ILLUSTRATED





(A)

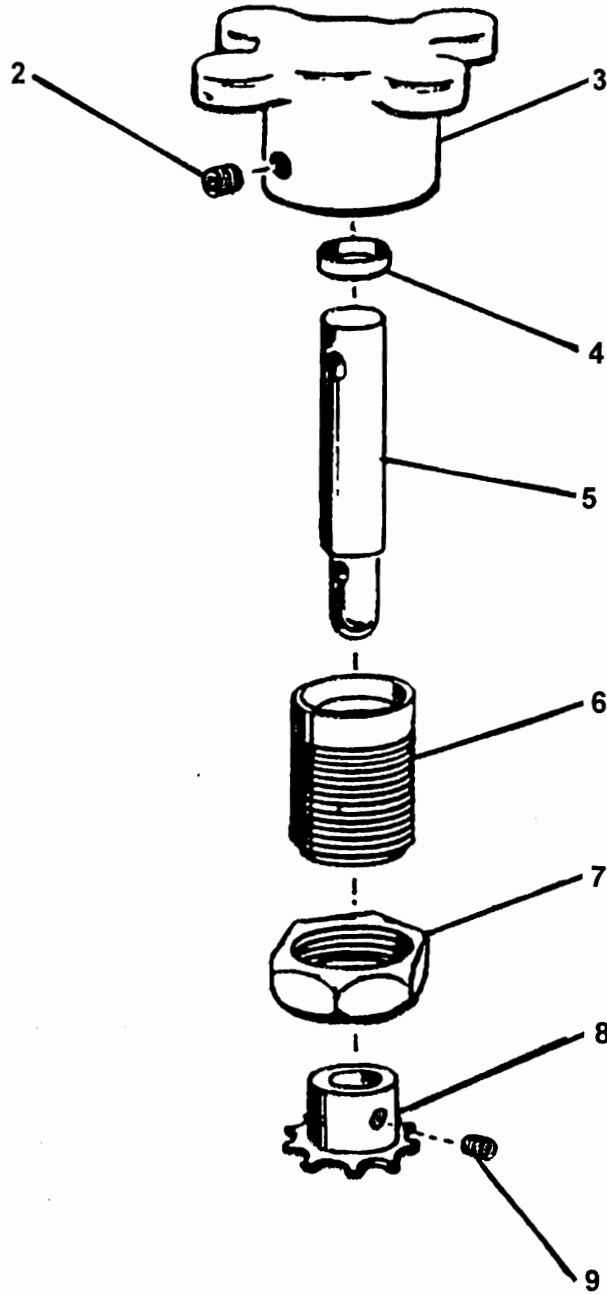


**PAD HOUSING ASSEMBLY**

**SOVA™  
PARTS  
GROUP 40  
FIGURE 03  
PAGE 02**

ITEM NO.	REED'S PARTS NO.	DESCRIPTION	QTY
		1 2 3 4 5	
-1	20155	Assembly, Pad Housing (See Group 40, Figure 02 for NHA)	Ref
2	80091	• Screw, Hex Cap	3
3		• Washer, SPL Lock	3
4		• Washer, Flat	3
5	10074	• Weldment, Pad Housing Chain Cover Large	1
6	20014	• Weldment, Pad Housing Chain Cover Small	1
7	20182	• Gasket, Pad Housing	A/R
8	20187	• Assembly, Knob Guide (See Group 40, Figure 04 for DET)	3
9	10094	• Chain, Pad Adjusting Long	1
10	10093	• Chain, Pad Adjusting Medium	1
11	10092	• Chain, Pad Adjusting Short	1
12	20213	• Top, Pad Housing	1
13	20188	• Assembly, Pad Adjusting Stud (See Group 40, Figure 05 for DET)	1
14	20214	• Bottom, Pad Housing	1

DASH (-) ITEM NOT ILLUSTRATED





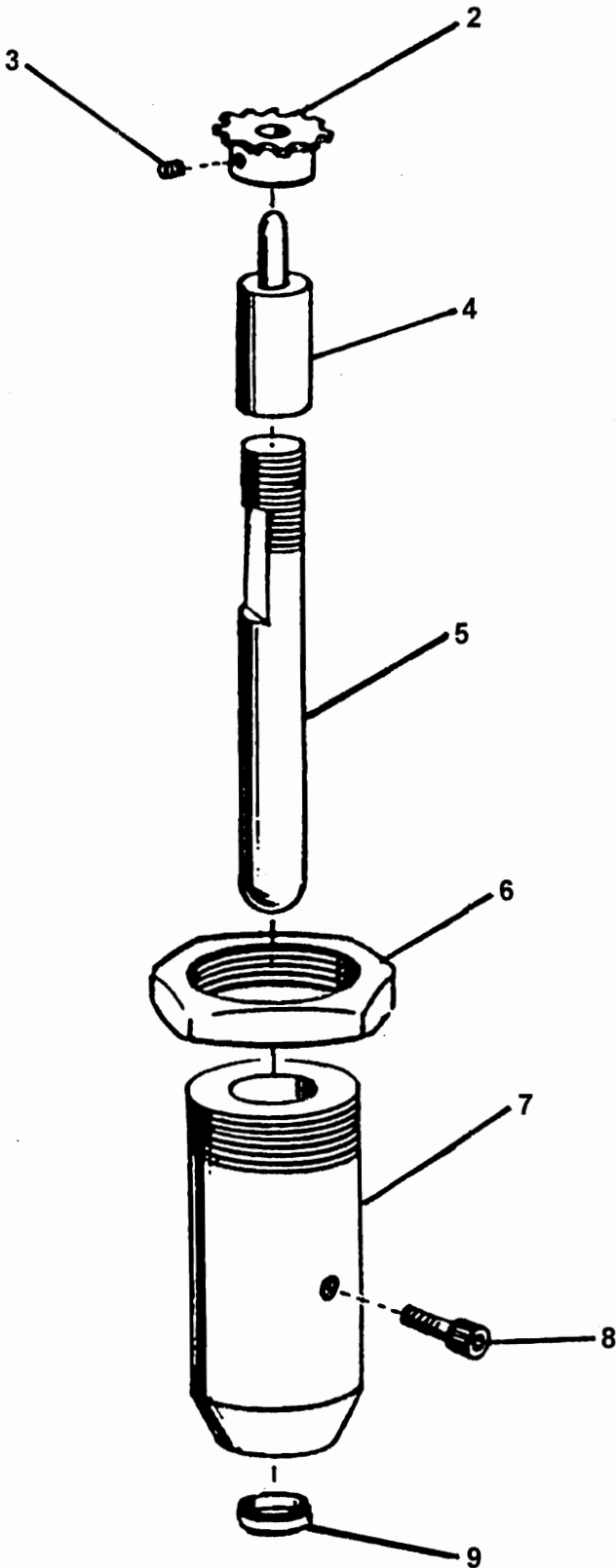
# KNOB GUIDE ASSEMBLY

SOVA™  
PARTS  
GROUP 40  
FIGURE 04  
PAGE 02

ITEM NO.	REED'S PARTS NO.	DESCRIPTION	QTY
		1 2 3 4 5	
-1	20187	Assembly, Knob Guide (See Group 40, Figure 03 for NHA)	Ref
2	80370	• Screw, Socket Set	1
3	20003	• Knob, Pad Adjusting	1
4	20002	• Seal, Pad Adjusting Stud	1
5	20021	• Stud, Pad Adjusting Knob	1
6	20020	• Guide, Pad Adjusting Knob	1
7	20005	• Nut, Pad Adjusting Jam	1
8	20004	• Sprocket, Pad Adjusting Chain	1
9	80369	• • Screw, Socket Set	1

DASH (-) ITEM NOT ILLUSTRATED

## PAD ADJUSTING STUD ASSEMBLY





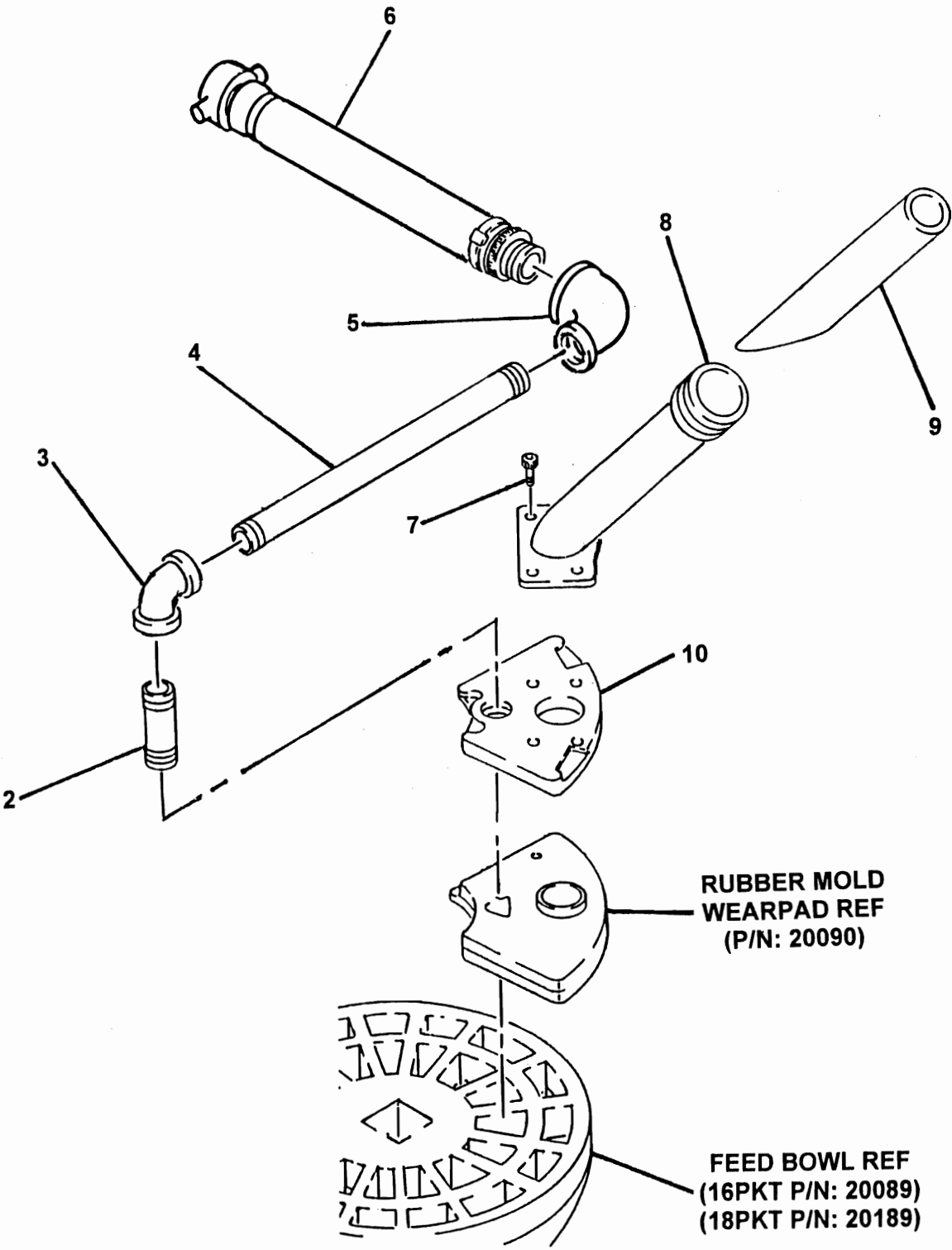
# PAD ADJUSTING STUD ASSEMBLY

SOVA™  
PARTS  
GROUP 40  
FIGURE 05  
PAGE 02

ITEM NO.	REED'S PARTS NO.	DESCRIPTION	QTY
		1 2 3 4 5	
-1	20188	Assembly, Pad Adjusting Stud (See Group 40, Figure 03 for NHA)	Ref
2	20004	• Sprocket, Pad Adjusting Chain with Set Screw	1
3	80370	• • Screw, Socket Set	1
4	20018	• Stud, Pad Adjusting Pusher	1
5	20016	• Stud, Pad Adjusting	1
6	20001	• Nut, Pad Adjusting Jam	1
7	20017	• guide, Pad Adjusting Stud	1
8	80252	• Screw, Socket Head Cap	1
9	20002	• Seal, Pad Adjusting Stud	1

DASH (-) ITEM NOT ILLUSTRATED

## 1.5 INCH LINER TYPE PAD BACKUP ASSEMBLY







# 1.5 INCH LINER TYPE PAD BACKUP ASSEMBLY

SOVA™  
PARTS  
GROUP 40  
FIGURE 06  
PAGE 02

ITEM NO.	REED'S PARTS NO.	DESCRIPTION					QTY
		1	2	3	4	5	
-1		20483-1Y for SOVA (20367-1 for the old 209A (2500-V06)) (a complete Bill of Materials for the 20483-1Y is shown on the next page)					Ref
2	20144	• Nipple, Shot					1
3	20143	• Elbow, 90					1
4	20125	• Nipple, Long					1
5	20145	• Elbow, Reducer					1
6	13305	• Assembly, Crossover Hose					1
7	80270	• Screw, Phillister Head Shot					4
8	10042	• Weldment, 1.5 Inch Liner type Goose Neck					1
9	13312	• Liner, 1.5 Inch Goose Neck					1
10	20092	• Plate, Pad Backup					1

DASH (-) ITEM NOT ILLUSTRATED

14:09:18

REED, LLC

Page 1 of 1

Function: BILI

INQ

Single Level Bill

11/14/2011

Option: A In Eff: 111411 Out Eff: 123179

Parent: 20483-1Y

Desc: PBUA-1 1/2" L.T. COARSE SOVA-YELLOW

Rv: Um: EA Run Lt: 2 Fixed Lt: 1

Plnr: GUN Lt: N Pln Pol: N Drwg:

Pt Use Seqn Component  
Starting:

Pt	Use	Seqn	Component	Description	C	T	Q	M	L
						Quantity	T	Um	B T
ASSY	001	10042		GSNK-1.5 IN LT WELD	N	1	I	EA	M N
ASSY	002	13312		LINER,GOOSENECK 1 1/2 IN YELLOW	N	1	I	EA	B N
ASSY	003	20092		PLATE-PAD BACKUP	N	1	I	EA	M N
ASSY	004	20125		NIPPLE, 3/4 NPT X 9 IN GALV	N	1	I	EA	B N
ASSY	005	20143		ELBOW-.75" X 90 DEG GALV	N	1	I	EA	B N
ASSY	006	20144		NIPPLE-.75" X 3"	N	1	I	EA	B N
ASSY	007	20145		ELBOW REDUCER-.75" TO 1.25" GALV	N	1	I	EA	B N
ASSY	008	13305-1		CROSSOVER HOSE ASSY-SOVA	N	1	I	EA	B N
ZZSPL	009	80270		SCREW-.25-20X1 GOOSENECK	X	4	I	EA	B N
ZZZRT	010	WC[R]GUN		GUN ASSEMBLY LABOR	R	.25	I	HR	M N



**SOVA SERIES 7 PNEUMATIC SPRAYING MACHINE  
ILLUSTRATED PARTS BREAKDOWN**

**SOVA  
PARTS  
GROUP 40  
FIGURE 07  
PAGE 01**

THIS PAGE INTENTIONALLY LEFT BLANK.

REVISION:

**REED PNEUMATIC SPRAYING MACHINE MODEL SOVA SERIES 7  
ILLUSTRATED PARTS MANUAL GROUP 50 AIR MOTOR/AIR INLET INSTALLATION  
CONTAINS THE FOLLOWING FIGURES:**

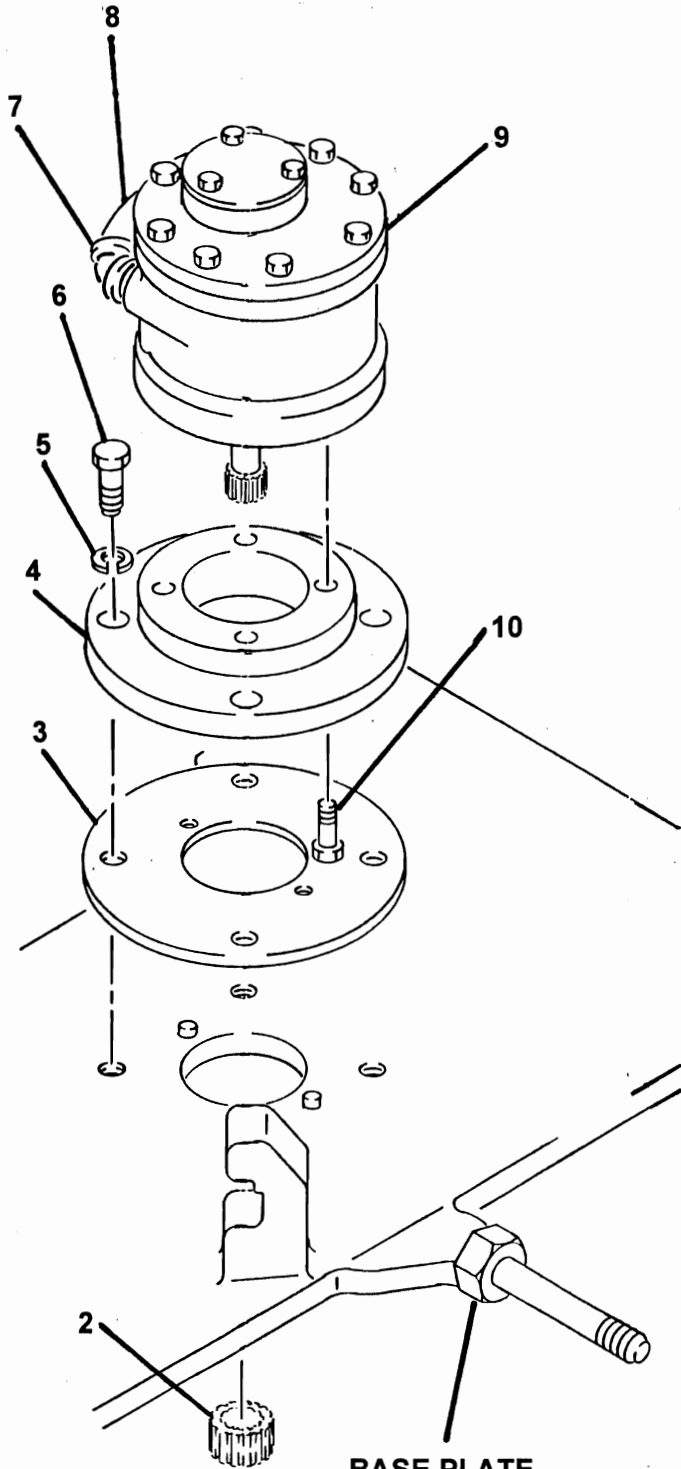
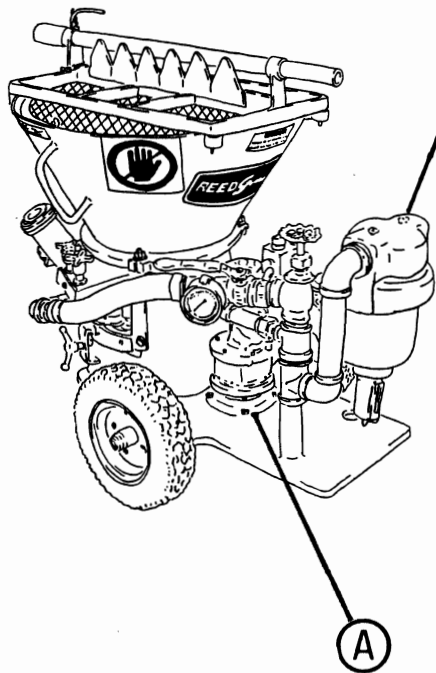
- FIGURE 00** TABLE OF CONTENTS
- FIGURE 01** AIR MOTOR AND AIR INLET INSTALLATION
- FIGURE 02** AIR MOTOR ASSEMBLY
- FIGURE 03** AIR INLET ASSEMBLY
- FIGURE 04** AIR FILTER ASSEMBLY



**NOTE: WATER SEPARATOR SHOWN IS AN  
OPTIONAL ACCESSORY. INSTALLATION  
IS HIGHLY RECOMMENDED.**

## AIR MOTOR AND AIR INLET INSTALLATION

NOTE: WATER SEPARATOR SHOWN IS AN OPTIONAL ACCESSORY. INSTALLATION IS HIGHLY RECOMMENDED.



(A)

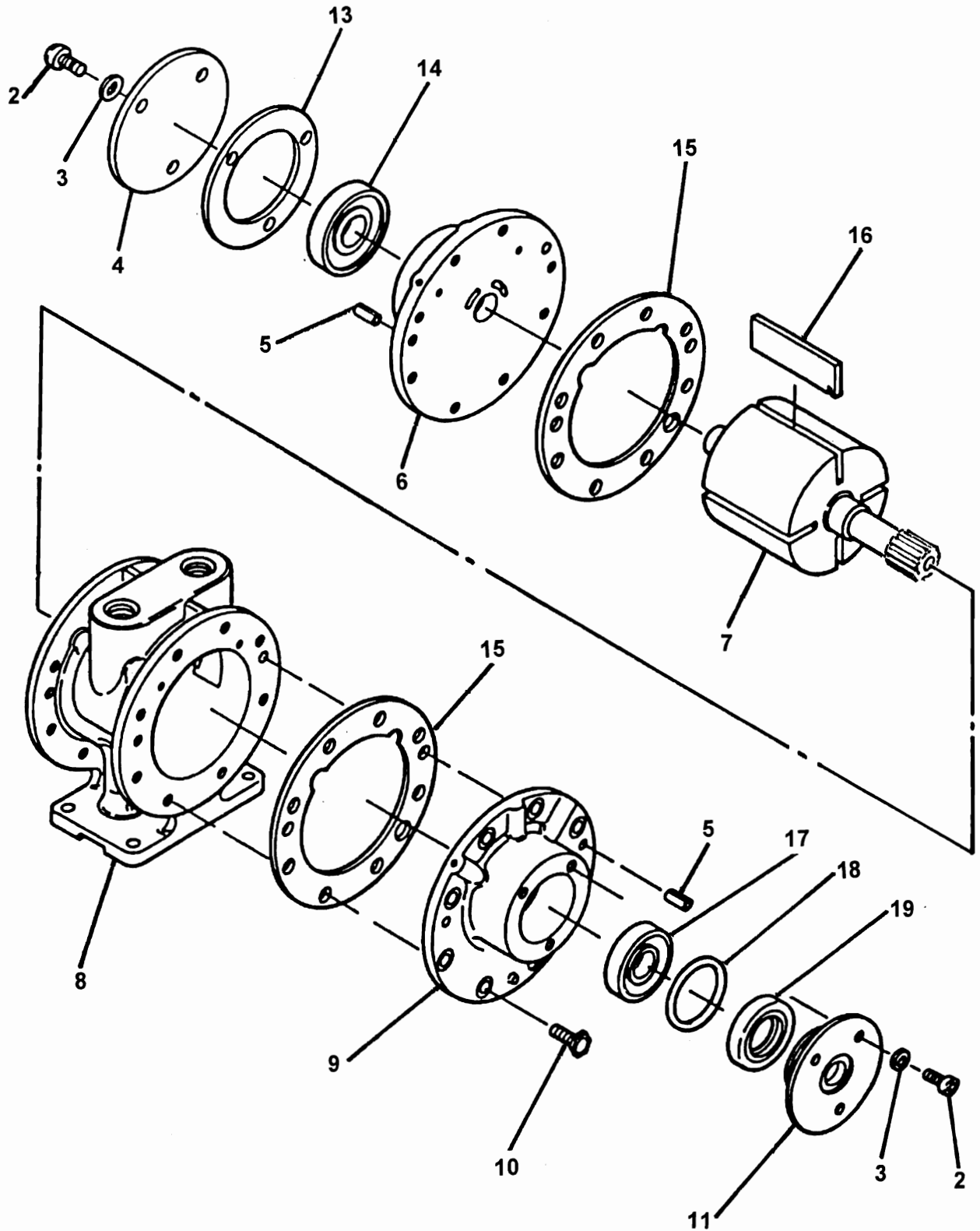


# AIR MOTOR AND AIR INLET INSTALLATION

SOVA™  
PARTS  
GROUP 50  
FIGURE 01  
PAGE 02

ITEM NO.	REED'S PARTS NO.	DESCRIPTION					QTY
		1	2	3	4	5	
-1	50-01	Installation, Air Motor and Air Inlet (See Group 10, Figure 01 for NHA)					Ref
2	20035	• Gear, Drive Motor					1
3	20194	• Gasket, Adapter Ring					1
4	20051	• Plate, Air Motor Adapter					1
5	80074	• Washer, Lock					4
6	80151	• Bolt, Hex					4
7	11075	• Elbow, 45					1
8	13306	• Assembly, Exhaust Hose					1
9	10600	• Assembly, Air Motor (See Group 50, Figure 02 for DET)					1
10	80250	• Screw, Socket					4
11	20468-1	• Assembly, Air Inlet (See Group 50, Figure 03 for DET)					1

DASH (-) ITEM NOT ILLUSTRATED



ITEM NO.	REED'S PARTS NO.	DESCRIPTION	QTY
		1 2 3 4 5	
-1	10600	Assembly, Air Motor (See Group 50, Figure 01 for NHA)	Ref
2		• Screw, Cap	6
3		• Washer, Lock	6
4		• Cap, Dead End	1
5		• Pin, Dowel	4
6		• Plate, Dead End	1
7		• Assembly, Rotor	1
8		• Body, Air Motor	1
9		• Plate, Drive End	1
10		• Bolt, Hex	8
11		• Cap, Drive End	1
-12	10605	• Kit, Repair	1
13		• • Gasket, Dead End Cap	1
14		• • Bearing, Dead End	1
15	10601	• • Gasket, Body Spacer	2
16	10602	• • Vane	4
17		• • Bearing, Drive End	1
18		• • O-Ring	1
19		• • Seal, Shaft	1

DASH (-) ITEM NOT ILLUSTRATED

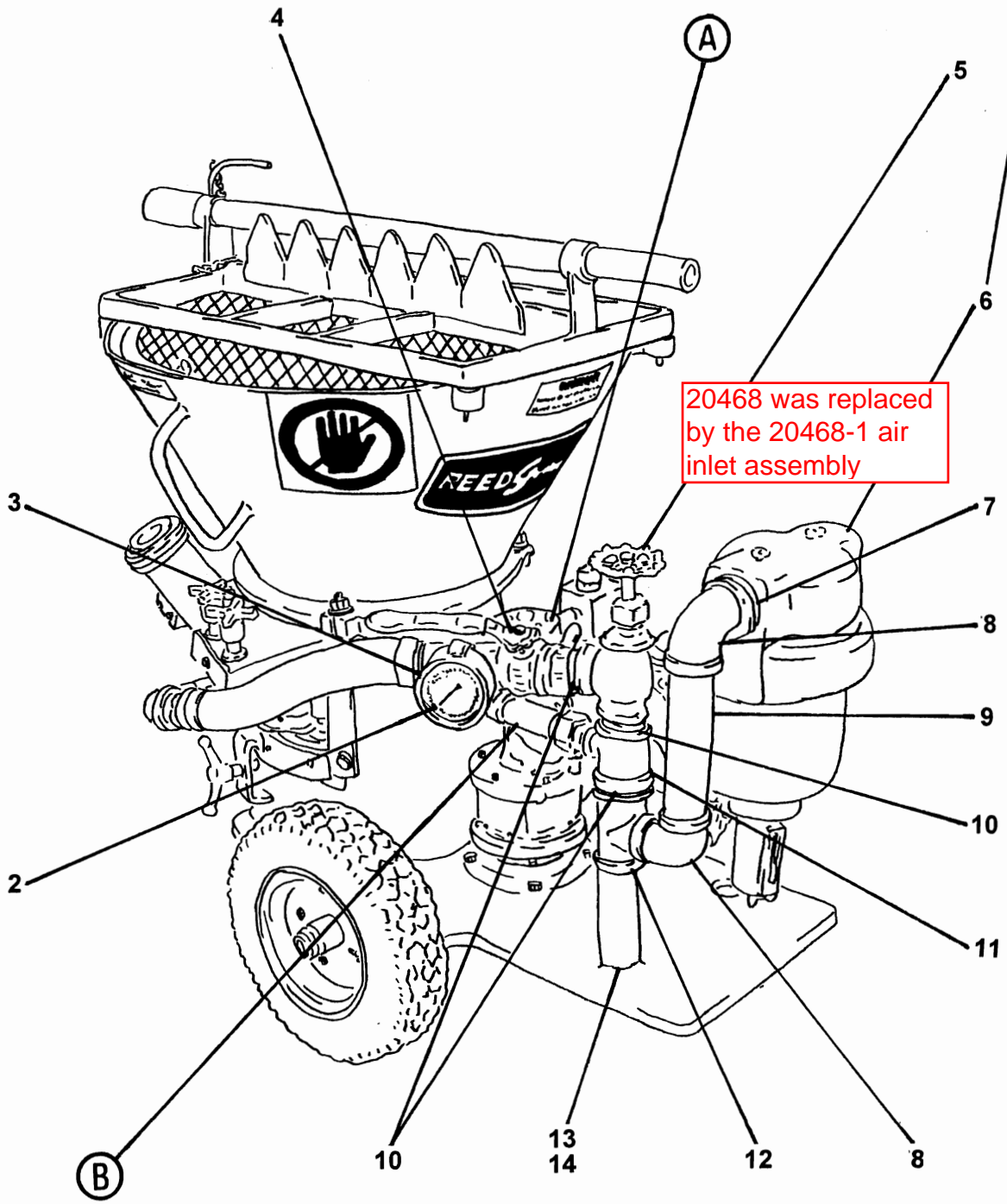




# AIR INLET ASSEMBLY

SOVA™  
PARTS  
GROUP 50  
FIGURE 03  
PAGE 01

NOTE: WATER SEPARATOR SHOWN IS AN OPTIONAL ACCESSORY. INSTALLATION IS HIGHLY RECOMMENDED.



ITEM NO.	REED'S PARTS NO.	DESCRIPTION					QTY
		1	2	3	4	5	
-1	20468-1	20468 was replaced by the 20468-1 air inlet assembly (the complete Bill of Materials for 20468-1 is on the next page)					Ref
2	13017	• Gauge, 0 – 160 PSI Air					1
3	13165	• Weldment, Air Gauge Guard					1
4	10290	• Valve, Air Control					1
5	10295	• Valve, Brass Angle					1
6	10314	• Filter, Air (See Group 50, Figure 04 for DET)					1
7	10587	• Bushing, Hex					1
8	78524	• Elbow, 90 Street					2
9	10229	• Nipple					1
10	10265	• Nipple, Close					3
11	10205	• Tee					1
12	10299	• Tee					1
13	10002	• Support, Air Inlet					1
14		• Bolt, Hex					1
15	13300	• Filter, Air					1
16	10298	• Nipple					1
17	13302	• Lubricator, Air					1
18	10268	• Nipple, Close					6
19	10204	• Street, L					3
20	20438	• Valve, Needle					1
21	10212	• Nipple, Black Pipe					1
22	11075	• Elbow, 45					1
23	10271	• Union, Galv					2
24	10270	• Valve, Brass Ball					1
25	10297	• Plug, Galv					1
26	10505	• Tee					1

DASH (-) ITEM NOT ILLUSTRATED

14:00:37

REED, LLC

Page 1 of 1

Function: BILI

INQ

Single Level Bill

11/14/2011

Option: A

In Eff: 111411

Out Eff: 123179

Parent: 20468-1

Desc: AIR INLET ASSY-SOVA & LOVA 8

Rv: Um: EA

Run Lt: 4 Fixed Lt: 0

Plnr: GUN Lt: N

Pln Pol: N

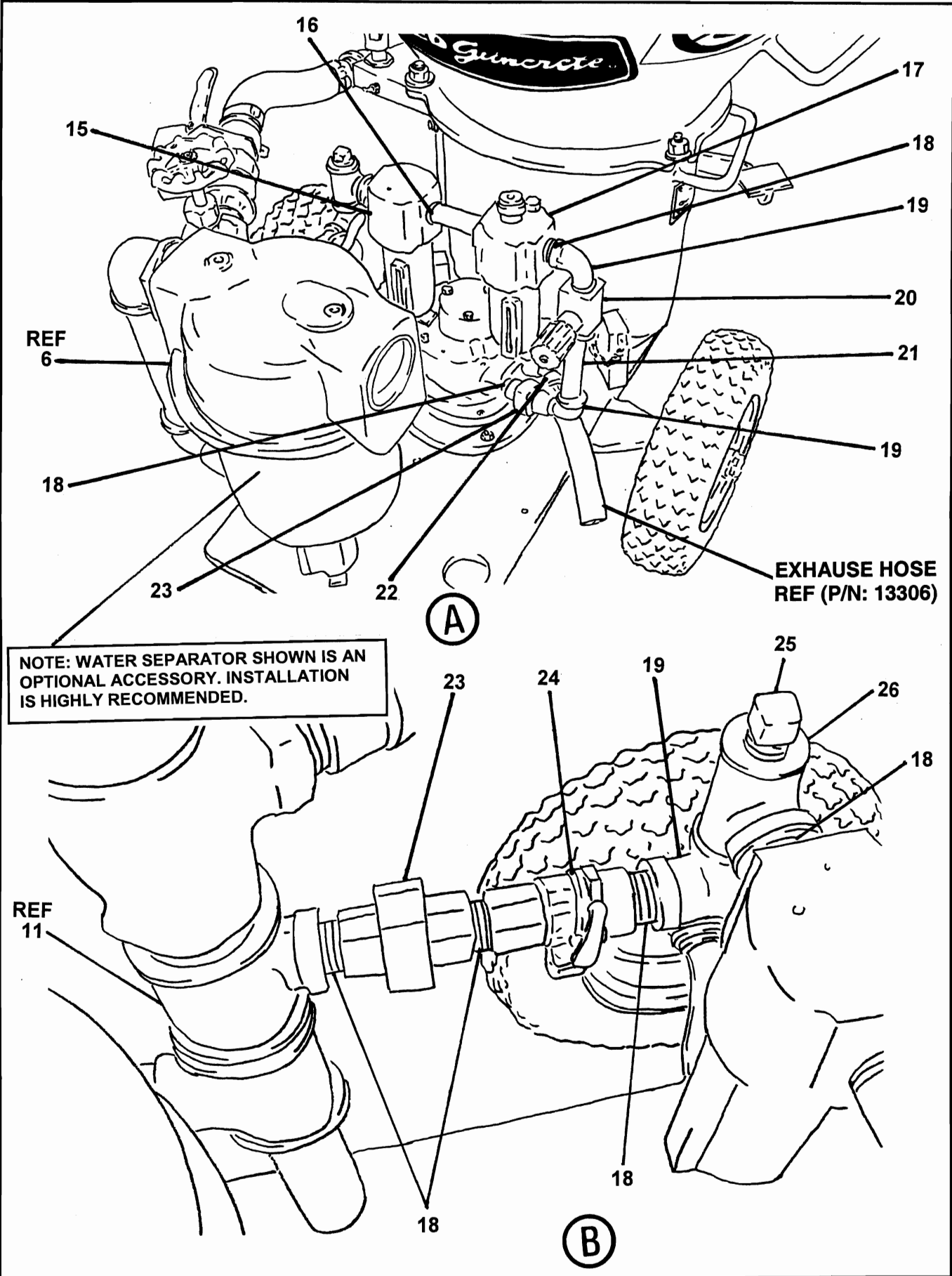
Drwg: M: PICTURE FILE

Pt Use Seqn Component

Starting:

Pt	Use	Seqn	Component	Description	C	Q	M	L
					T	Quantity	T	Um B T
GASSY 001		10265		NIPPLE-CLOSE 1 1/4 NPT SCH 40 GALV	N	2	I	EA B N
GASSY 002		13300		AIR FILTER - 1/2 IN NORGRN	N	1	I	EA B N
GASSY 003		13302		AIR LUBRICATOR - 1/2 IN NORGRN	N	1	I	EA B N
GASSY 004		12050		VALVE-AIR/WATER CNTL-1/2"(NEEDLE)	N	1	I	EA B N
GASSY 005		10290		VALVE-AIR CNTL 1-1/4"	N	1	I	EA B N
GASSY 006		10270		BALL VALVE, 1/2" BRASS	N	1	I	EA B N
GASSY 007		10295		VALVE-BRASS ANGLE 1-1/4"	N	1	I	EA B N
GASSY 008		10266		NIPPLE-CLOSE 1 1/4 NPT HW SCH 80	N	1	I	EA B N
GASSY 010		10268		NIPPLE-CLOSE 1/2"	N	4	I	EA B N
GASSY 011		10303		NIPPLE-GALV 1.25 X 2-1/2"	N	1	I	EA B N
GASSY 012		10206		NIPPLE-1/2" X 4"	N	1	I	EA B N
GASSY 013		10505		TEE-1/2"-SCH 40 GALV	N	1	I	EA B N
GASSY 014		10297		PLUG-GALV 1/2"	N	1	I	EA B N
GASSY 015		10271		UNIONS-GALV 1/2"	N	2	I	EA B N
GASSY 016		11075		ELBOW-GALV 1/2" ST. 45 DEG.	N	1	I	EA B N
GASSY 017		10204		STREET EL 1/2" 90 GALV	N	3	I	EA B N
GASSY 018		10299		TEE, 1 1/4 NPT GALV	N	1	I	EA B N
GASSY 019		10205		TEE- GALV 1-1/4 X 1-1/4 X 1/2	N	1	I	EA B N
GASSY 020		10002		AIR INLET SUPPORT PAINTED	N	1	I	EA M N
GASSY 021		10293		NIPPLE-GALV 1/2" X 1-1/2"	N	1	I	EA B N
GASSY 022		10298		NIPPLE-1/2" X 3" GALV	N	1	I	EA B N
GASSY 023		20512		NIPPLE-GALV 1/2" X 9"	N	1	I	EA B N
GASSY 990		WC[R]GUN		GUN ASSEMBLY LABOR	R	.333	I	HR M N

## AIR INLET ASSEMBLY



ITEM NO.	REED'S PARTS NO.	DESCRIPTION					QTY
		1	2	3	4	5	
-1	20468-1	20468 was replaced by the 20468-1 air inlet assembly (the complete Bill of Materials for 20468-1 is on the next page)					Ref
2	13017	• Gauge, 0 – 160 PSI Air					1
3	13165	• Weldment, Air Gauge Guard					1
4	10290	• Valve, Air Control					1
5	10295	• Valve, Brass Angle					1
6	10314	• Filter, Air (See Group 50, Figure 04 for DET)					1
7	10587	• Bushing, Hex					1
8	78524	• Elbow, 90 Street					2
9	10229	• Nipple					1
10	10265	• Nipple, Close					3
11	10205	• Tee					1
12	10299	• Tee					1
13	10002	• Support, Air Inlet					1
14		• Bolt, Hex					1
15	13300	• Filter, Air					1
16	10298	• Nipple					1
17	13302	• Lubricator, Air					1
18	10268	• Nipple, Close					6
19	10204	• Street, L					3
20	20438	• Valve, Needle					1
21	10212	• Nipple, Black Pipe					1
22	11075	• Elbow, 45					1
23	10271	• Union, Galv					2
24	10270	• Valve, Brass Ball					1
25	10297	• Plug, Galv					1
26	10505	• Tee					1

DASH (-) ITEM NOT ILLUSTRATED

14:00:37

REED, LLC

Page 1 of 1

Function: BILI

INQ

Single Level Bill

11/14/2011

Option: A

In Eff: 111411

Out Eff: 123179

Parent: 20468-1

Desc: AIR INLET ASSY-SOVA & LOVA 8

Rv: Um: EA

Run Lt: 4 Fixed Lt: 0

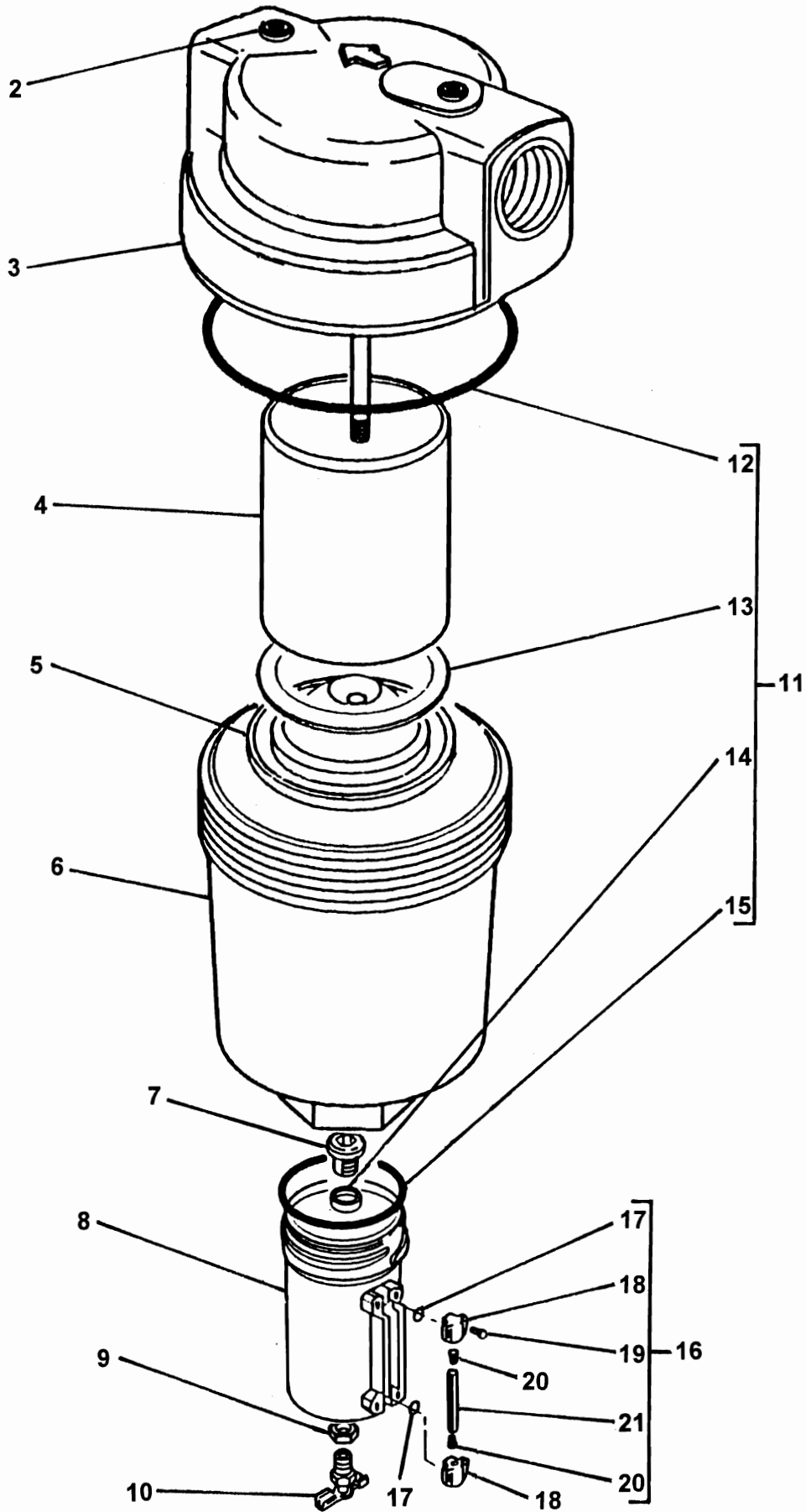
Plnr: GUN Lt: N

Pln Pol: N

Drwg: M: PICTURE FILE

Pt Use Seqn Component  
Starting:

Pt	Use	Seqn	Component	Description	C	Q	M	L
					T	Quantity	T	Um B T
GASSY 001		10265		NIPPLE-CLOSE 1 1/4 NPT SCH 40 GALV	N	2	I	EA B N
GASSY 002		13300		AIR FILTER - 1/2 IN NORGRN	N	1	I	EA B N
GASSY 003		13302		AIR LUBRICATOR - 1/2 IN NORGRN	N	1	I	EA B N
GASSY 004		12050		VALVE-AIR/WATER CNTL-1/2"(NEEDLE)	N	1	I	EA B N
GASSY 005		10290		VALVE-AIR CNTL 1-1/4"	N	1	I	EA B N
GASSY 006		10270		BALL VALVE, 1/2" BRASS	N	1	I	EA B N
GASSY 007		10295		VALVE-BRASS ANGLE 1-1/4"	N	1	I	EA B N
GASSY 008		10266		NIPPLE-CLOSE 1 1/4 NPT HW SCH 80	N	1	I	EA B N
GASSY 010		10268		NIPPLE-CLOSE 1/2"	N	4	I	EA B N
GASSY 011		10303		NIPPLE-GALV 1.25 X 2-1/2"	N	1	I	EA B N
GASSY 012		10206		NIPPLE-1/2" X 4"	N	1	I	EA B N
GASSY 013		10505		TEE-1/2"-SCH 40 GALV	N	1	I	EA B N
GASSY 014		10297		PLUG-GALV 1/2"	N	1	I	EA B N
GASSY 015		10271		UNIONS-GALV 1/2"	N	2	I	EA B N
GASSY 016		11075		ELBOW-GALV 1/2" ST. 45 DEG.	N	1	I	EA B N
GASSY 017		10204		STREET EL 1/2" 90 GALV	N	3	I	EA B N
GASSY 018		10299		TEE, 1 1/4 NPT GALV	N	1	I	EA B N
GASSY 019		10205		TEE- GALV 1-1/4 X 1-1/4 X 1/2	N	1	I	EA B N
GASSY 020		10002		AIR INLET SUPPORT PAINTED	N	1	I	EA M N
GASSY 021		10293		NIPPLE-GALV 1/2" X 1-1/2"	N	1	I	EA B N
GASSY 022		10298		NIPPLE-1/2" X 3" GALV	N	1	I	EA B N
GASSY 023		20512		NIPPLE-GALV 1/2" X 9"	N	1	I	EA B N
GASSY 990		WC[R]GUN		GUN ASSEMBLY LABOR	R	.333	I	HR M N



ITEM NO.	REED'S PARTS NO.	DESCRIPTION					QTY
		1	2	3	4	5	
-1	10314	Sub-Assembly, Optional Air Filter (See Group 50, Figure 03 for NHA)					Ref
2					• Plug	2	
3					• Head, Filter	1	
4	10385				• Element, Sintered Bronze Filter	1	
5					• End, Cap	1	
6					• Body, Intermediate	1	
7					• Bolt, Drain	1	
8					• Bowl, Manual Drain	1	
9					• Nut, Retaining	1	
10					• Petcock, Drain	1	
11	10386				• Kit, Seal	1	
12					•• O-Ring	1	
13					•• Washer	1	
14					•• Seal	1	
15					•• O-Ring	1	
16	10387				• Kit, Sight Glass	1	
17					•• O-Ring	2	
18					•• Bracket, Sight Glass	2	
19					•• Screw	2	
20					•• Holder	2	
21					•• Glass, Sight	1	

DASH (-) ITEM NOT ILLUSTRATED





**SOVA SERIES 7 PNEUMATIC SPRAYING MACHINE  
ILLUSTRATED PARTS BREAKDOWN**

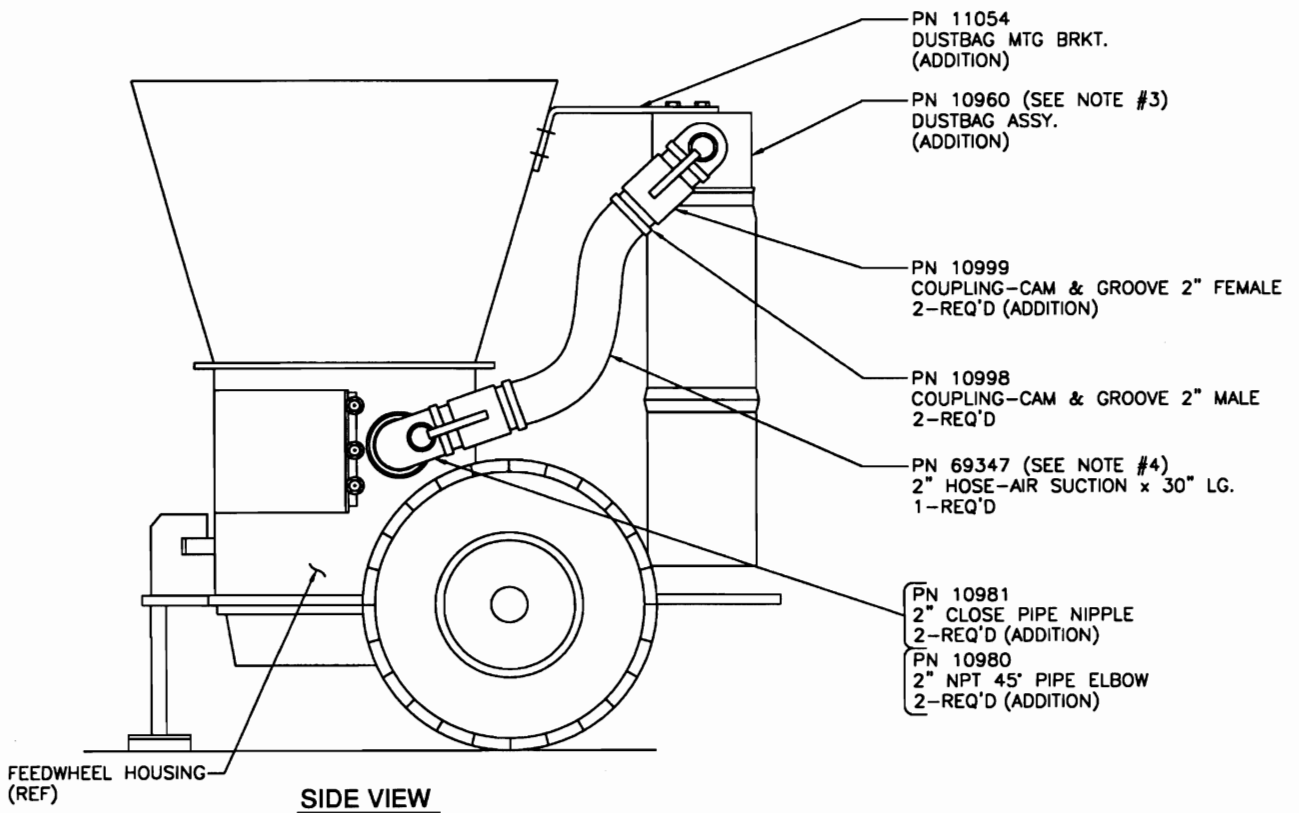
**SOVA  
PARTS  
GROUP 50  
FIGURE 05  
PAGE 01**

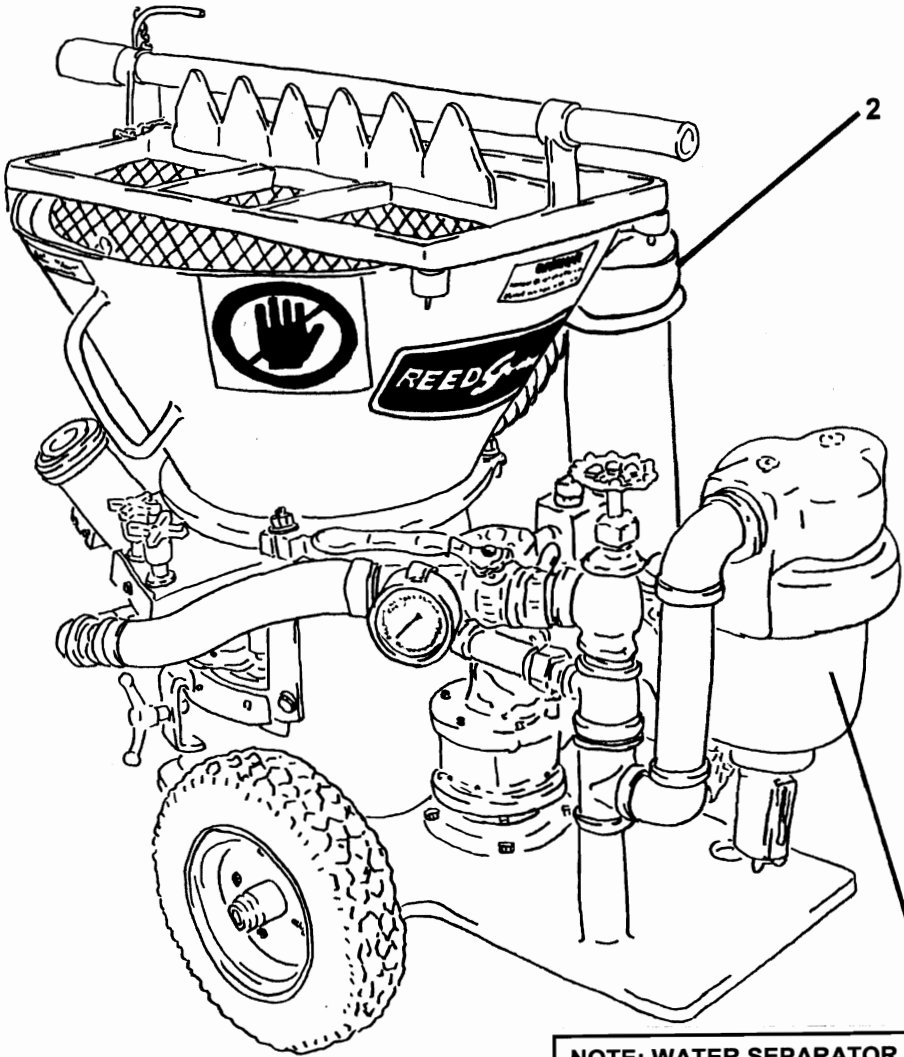
THIS PAGE INTENTIONALLY LEFT BLANK.

REVISION:

**REED PNEUMATIC SPRAYING MACHINE MODEL SOVA SERIES 7  
ILLUSTRATED PARTS MANUAL GROUP 60 ACCESSORIES INSTALLATION  
CONTAINS THE FOLLOWING FIGURES:**

- FIGURE 00** TABLE OF CONTENTS
- FIGURE 01** ACCESSORIES INSTALLATION
- FIGURE 02** DUST BAG ASSEMBLY





NOTE: WATER SEPARATOR SHOWN IS AN OPTIONAL ACCESSORY. INSTALLATION IS HIGHLY RECOMMENDED.

**REED****ACCESSORIES INSTALLATION**

SOVA™

**PARTS**

GROUP 60

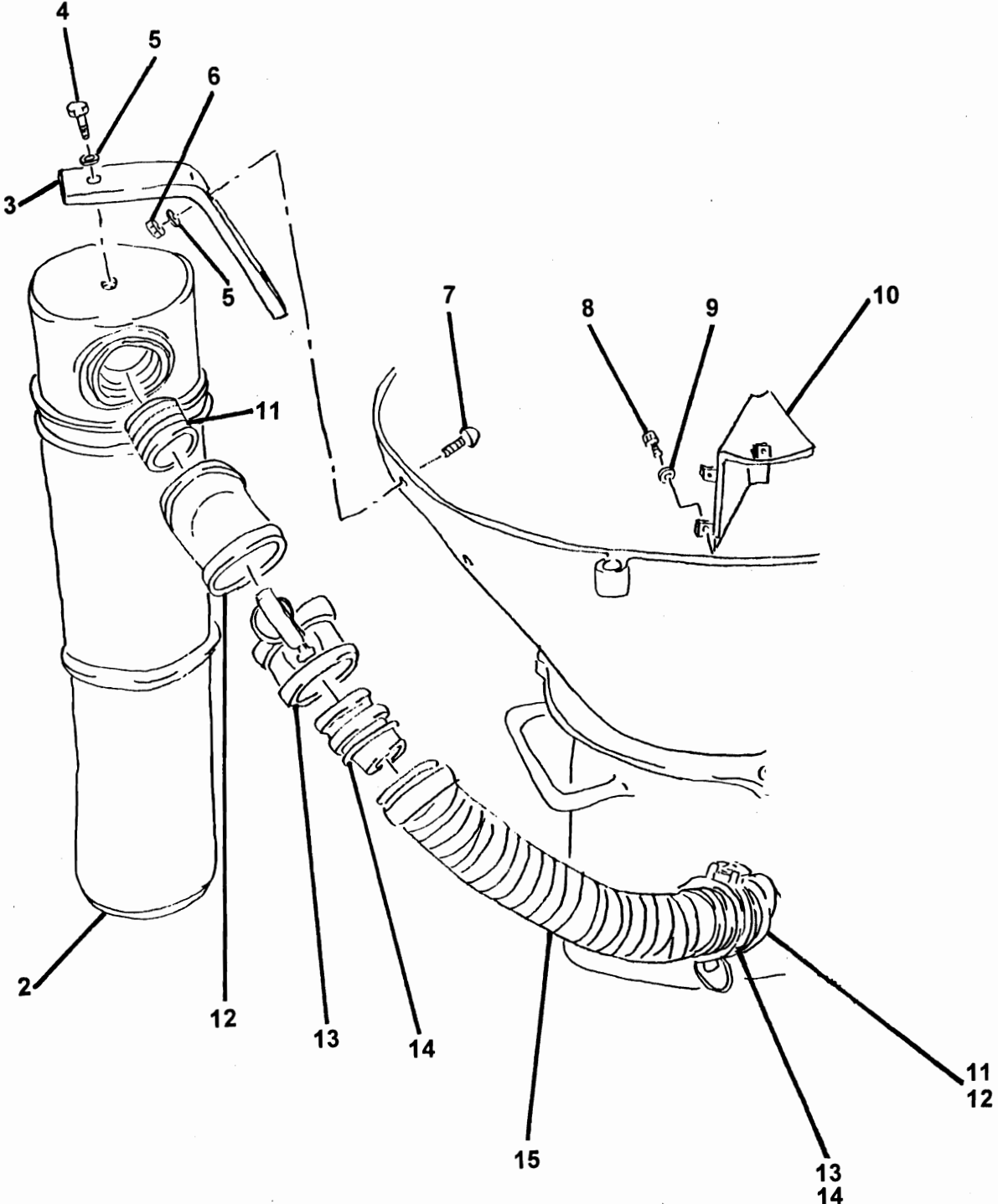
FIGURE 01

PAGE 02

ITEM NO.	REED'S PARTS NO.	DESCRIPTION	QTY
-1	60-01	1 2 3 4 5 Installation, Accessories (See Group 10, Figure 01 for NHA)	Ref
2	20224	• Assembly, Dust Bag (See Group 60, Figure 02 for DET)	1

DASH (-) ITEM NOT ILLUSTRATED

## DUST BAG ASSEMBLY



ITEM NO.	REED'S PARTS NO.	DESCRIPTION	QTY
		1 2 3 4 5	
-1	20224	Installation, Dust Bag and Support (See Group 60, Figure 01 for NHA)	Ref
2	10960	• Sub-Assembly, Dust Bag	1
3	11054	• Bracket, Dust Bag Mounting	1
4		• Bolt, Hex	1
5		• Washer, Flat	3
6		• Nut, Hex	2
7		• Screw, Flat	2
8		• Bolt, Hex	3
9		• Washer, Flat	3
10	20227	• Weldment, Dust Bag	1
11	10981	• Nipple, Close Pipe	2
12	10980	• Elbow, 45	2
13	10998	• Coupling, Male	2
14	10999	• Coupling, Female	2
15	69347	• Hose, Air Suction	1

DASH (-) ITEM NOT ILLUSTRATED



**SOVA SERIES 7 PNEUMATIC SPRAYING MACHINE  
ILLUSTRATED PARTS BREAKDOWN**

**SOVA  
PARTS  
GROUP 60  
FIGURE 03  
PAGE 01**

THIS PAGE INTENTIONALLY LEFT BLANK.

REVISION:

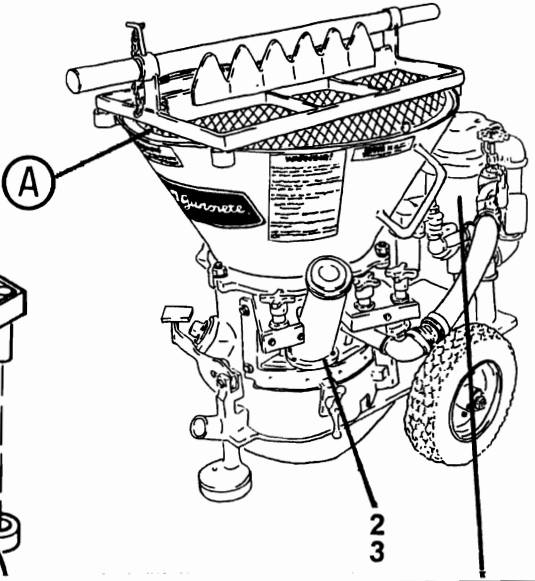
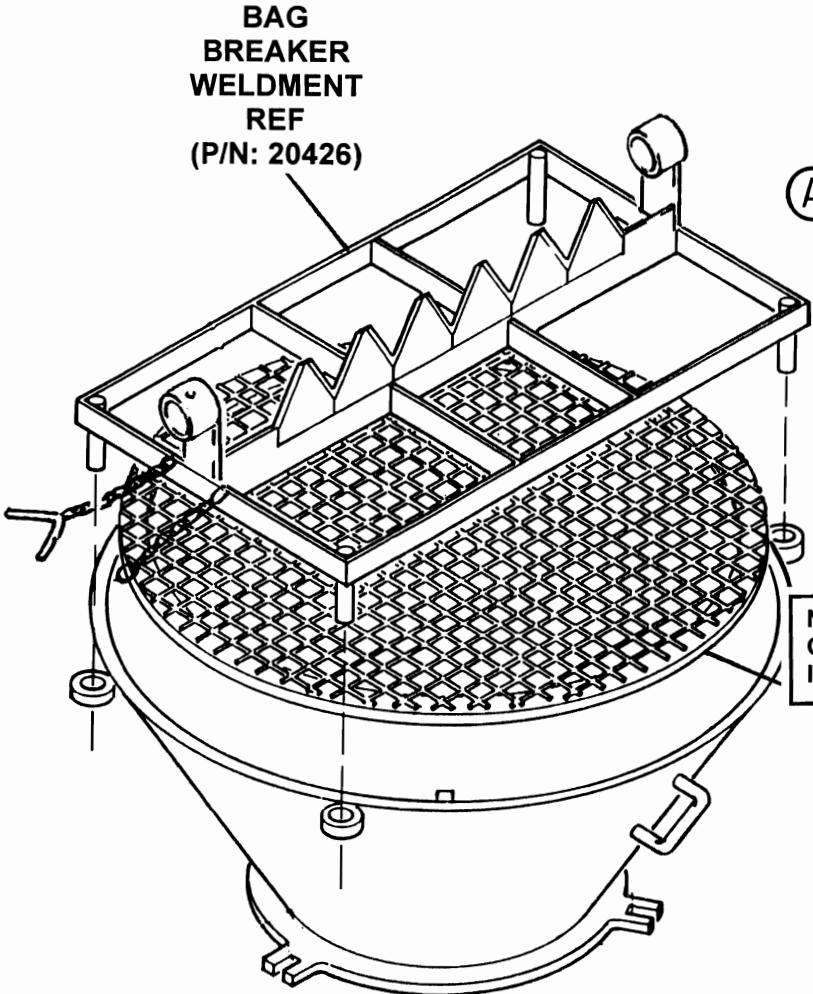
**REED PNEUMATIC SPRAYING MACHINE MODEL SOVA SERIES 7  
ILLUSTRATED PARTS MANUAL GROUP 70 OPTIONAL INSTALLATION  
CONTAINS THE FOLLOWING FIGURES:**

- FIGURE 00** TABLE OF CONTENTS
- FIGURE 01** OPTIONAL INSTALLATION
- FIGURE 02** 1.5 INCH COARSE THREAD PAD BACKUP ASSEMBLY
- FIGURE 03** 1.25 INCH COARSE THREAD PAD BACKUP ASSEMBLY

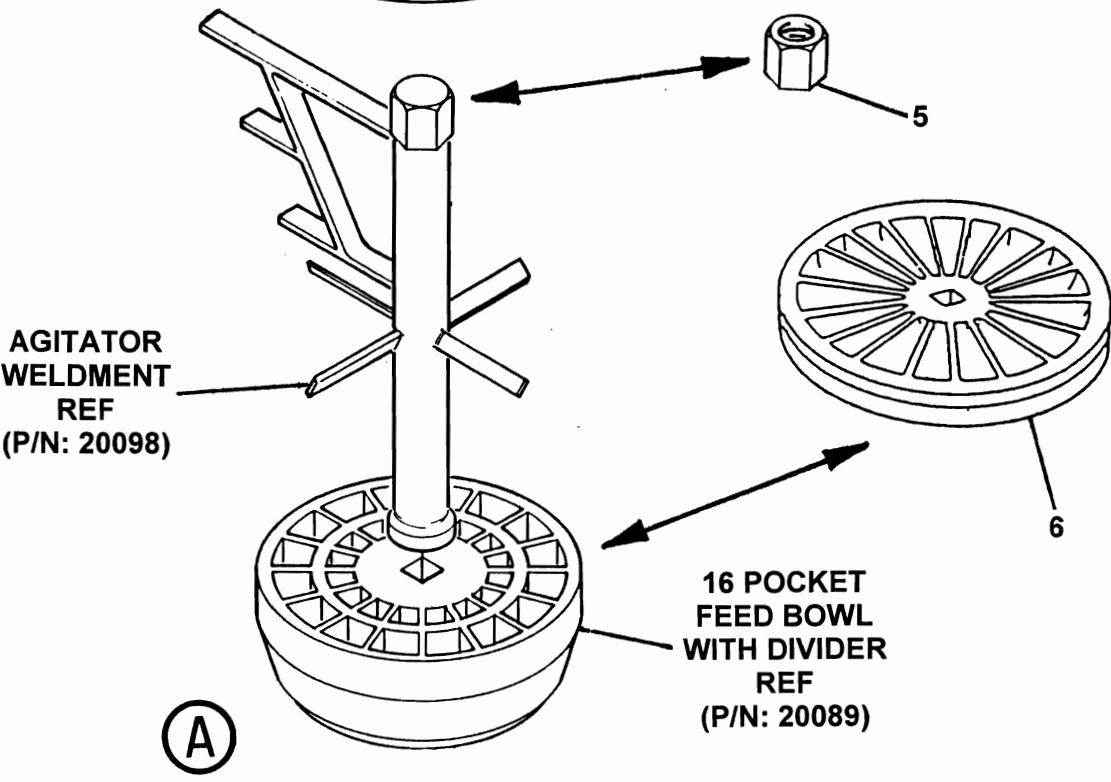
**NOTE: WATER SEPARATOR SHOWN IS AN  
OPTIONAL ACCESSORY. INSTALLATION  
IS HIGHLY RECOMMENDED.**







NOTE: WATER SEPARATOR SHOWN IS AN OPTIONAL ACCESSORY. INSTALLATION IS HIGHLY RECOMMENDED.



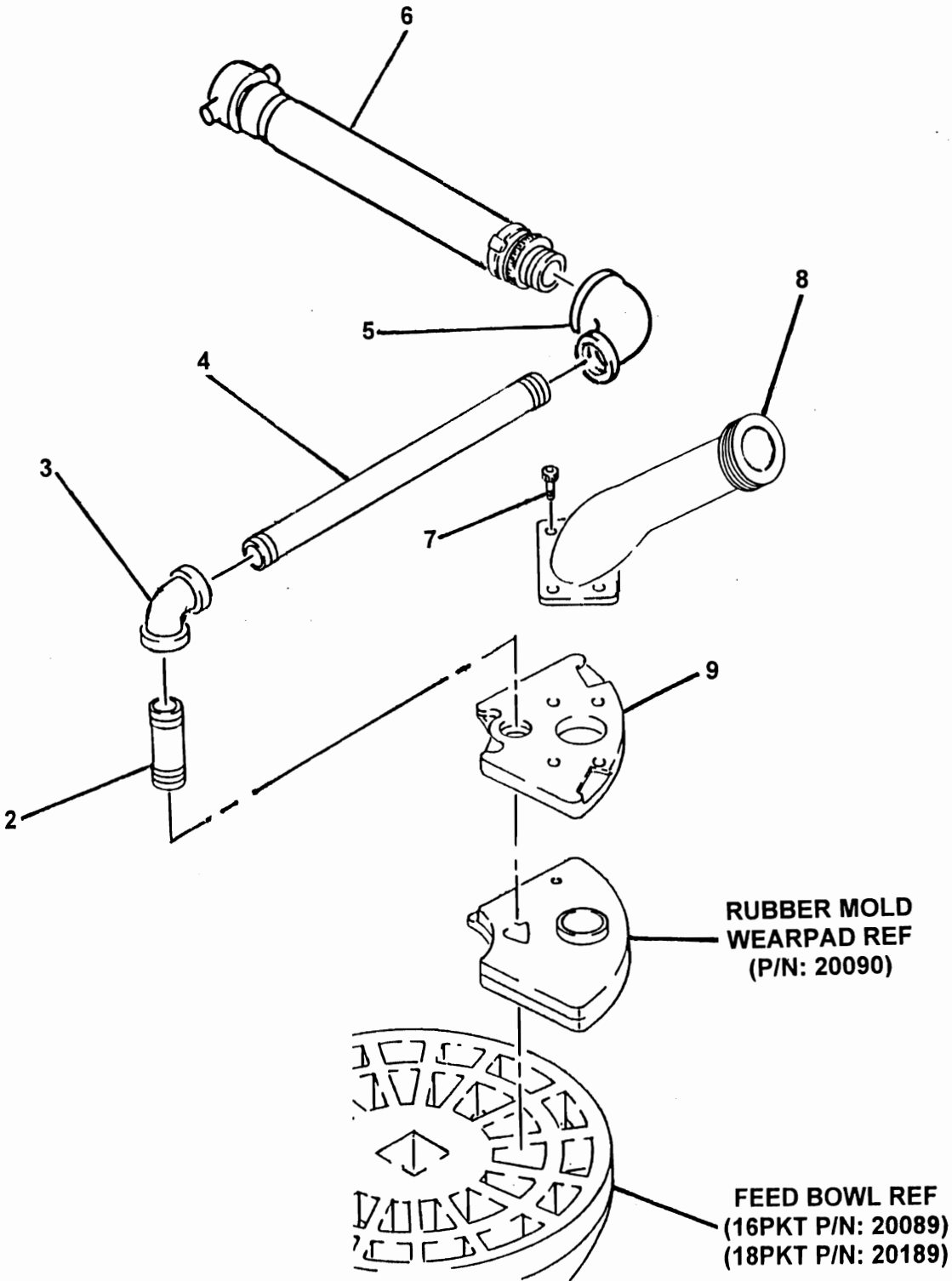


# OPTIONAL INSTALLATION

ITEM NO.	REED'S PARTS NO.	DESCRIPTION					QTY
		1	2	3	4	5	
-1	70-01	Installation, Optional (See Group 10, Figure 01 for NHA)					Ref
2	20469-1	• Assembly, 1.5 Inch Coarse Thread Pad Backup (See Group 70, Figure 02 and for DET)					1
3	20470-1	• Assembly, 1.25 Inch Coarse Thread Pad Backup (See Group 70, Figure 03 and for DET)					1
4	20084	• Weldment, 5/8 Inch Screen					1
5	20436	• Nut, Spindle Cap					1
6	20189	• Bowl, 18 Pocket without Divider Feed					1

DASH (-) ITEM NOT ILLUSTRATED

## 1.5 INCH COARSE THREAD PAD BACKUP ASSEMBLY





# 1.5 INCH COARSE THREAD PAD BACKUP ASSEMBLY

SOVA™  
PARTS  
GROUP 70  
FIGURE 02  
PAGE 02

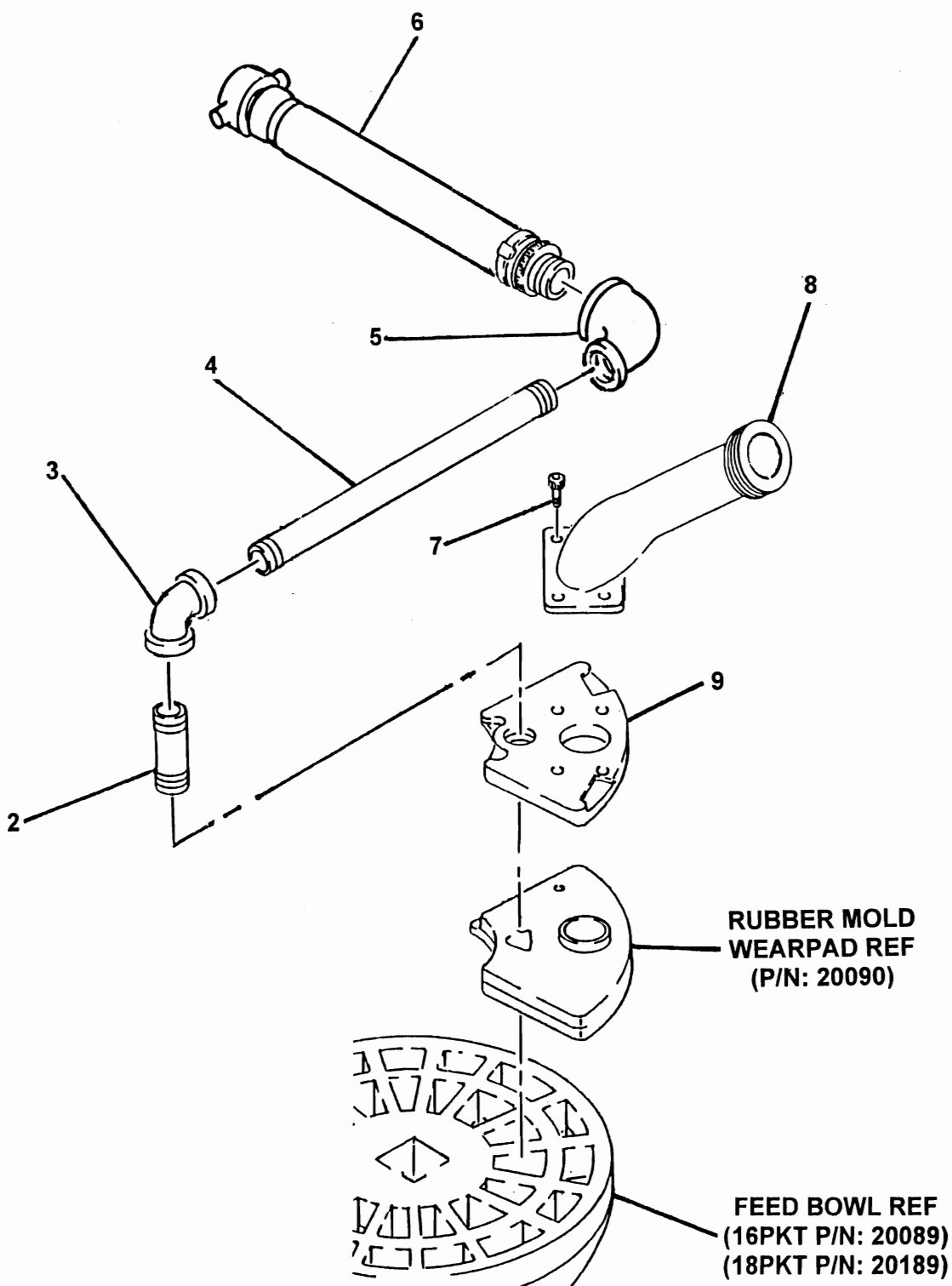
ITEM NO.	REED'S PARTS NO.	DESCRIPTION					QTY
		1	2	3	4	5	
-1	20469-1	Assembly, 1.5 Inch Coarse Thread Pad Backup (See Group 70, Figure 01 for NHA)					Ref
2	20144	• Nipple, Shot					1
3	20143	• Elbow, 90					1
4	20125	• Nipple, Long					1
5	20145	• Elbow, Reducer					1
6	13305-1	• Assembly, Crossover Hose					1
7	80270	• Screw, Phillister Head Shot					4
8	10044	Weldment, 1.5 Inch Coarse Thread Goose Neck					1
9	20092	• Plate, Pad Backup					1

DASH (-) ITEM NOT ILLUSTRATED



# 1.25 INCH COARSE THREAD PAD BACKUP ASSEMBLY

SOVA™  
PARTS  
GROUP 70  
FIGURE 03  
PAGE 01





# 1.25 INCH COARSE THREAD PAD BACKUP ASSEMBLY

SOVA™  
PARTS  
GROUP 70  
FIGURE 03  
PAGE 02

ITEM NO.	REED'S PARTS NO.	DESCRIPTION	QTY
		1 2 3 4 5	
-1	20470-1	Assembly, 1.25 Inch Coarse Thread Pad Backup (See Group 70, Figure 01 for NHA)	Ref
2	20144	• Nipple, Shot	1
3	20143	• Elbow, 90	1
4	20125	• Nipple, Long	1
5	20145	• Elbow, Reducer	1
6	13305-1	• Assembly, Crossover Hose	1
7	80270	• Screw, Phillister Head Shot	4
8	10043	Weldment, 1.25 Inch Coarse Thread Goose Neck	1
9	20092	• Plate, Pad Backup	1

DASH (-) ITEM NOT ILLUSTRATED

**REED**

**SOVA SERIES 7 PNEUMATIC SPRAYING MACHINE  
ILLUSTRATED PARTS BREAKDOWN**

**SOVA  
PARTS  
GROUP 70  
FIGURE 04  
PAGE 01**

THIS PAGE INTENTIONALLY LEFT BLANK.

REVISION: