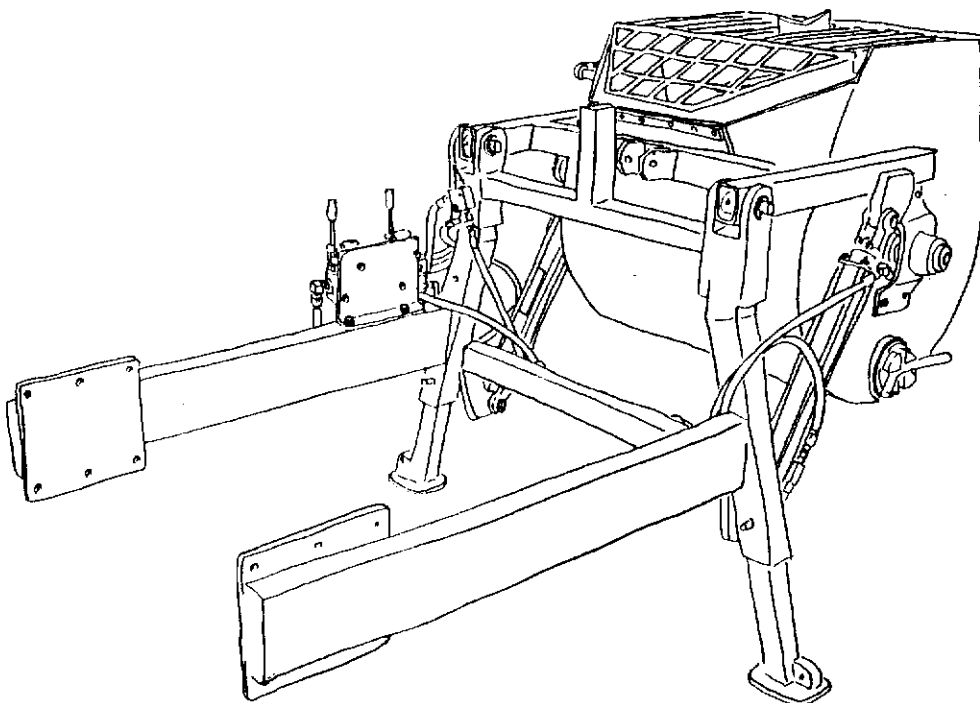
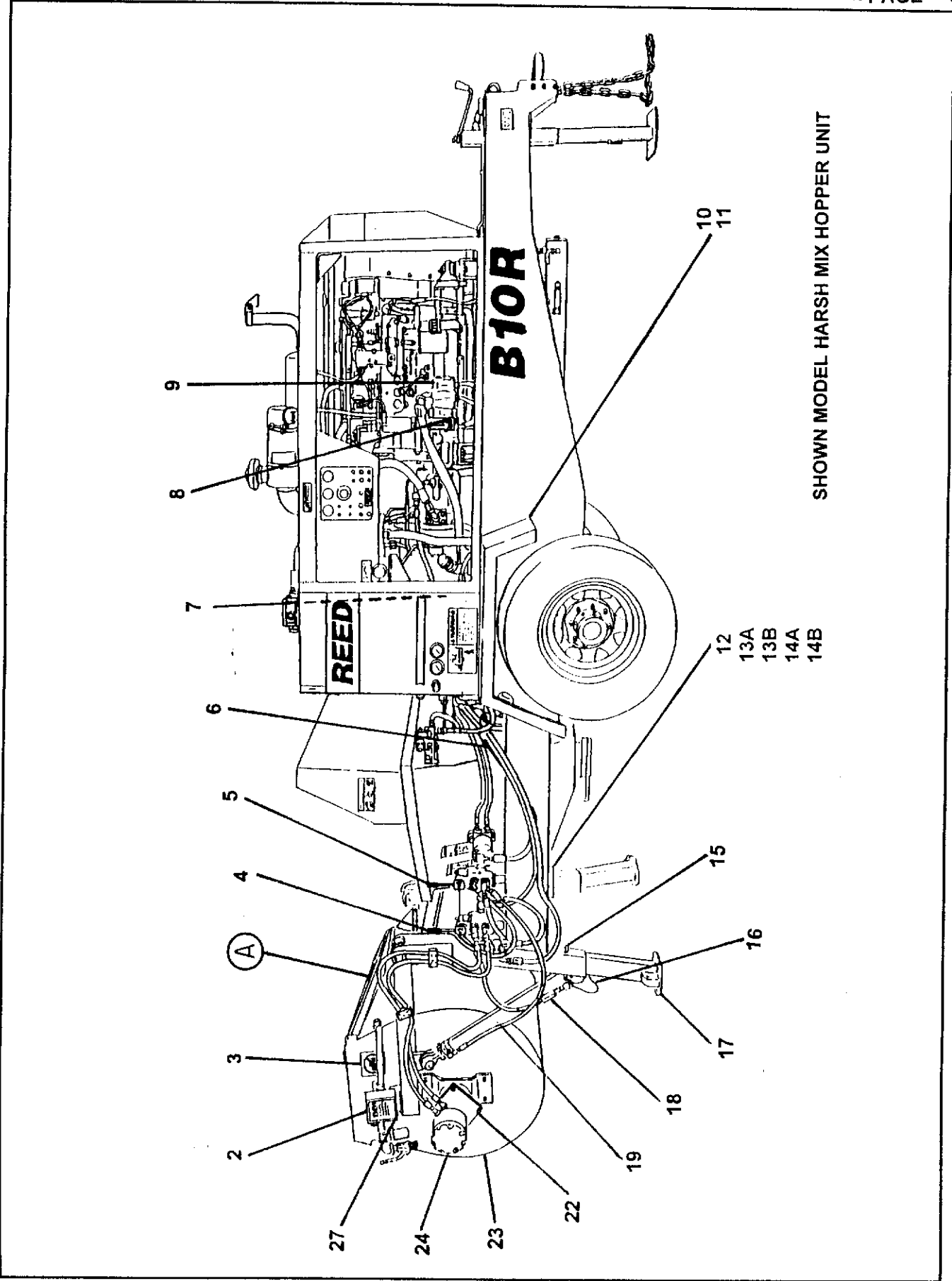


**REED TRAILER MOUNTED CONCRETE PUMP WITH LIFT MIXER MODEL B10RX ILLUSTRATED PARTS MANUAL GROUP 90 LIFT MIXER INSTALLATION CONTAINS THE FOLLOWING FIGURES:**

<b>FIGURE 00</b>	<b>TABLE OF CONTENTS</b>
<b>FIGURE 01</b>	<b>LIFT MIXER INSTALLATION</b>
<b>FIGURE 02</b>	<b>WATRE PLUMBING ASSEMBLY</b>
<b>FIGURE 03</b>	<b>WATER METER ASSEMBLY</b>
<b>FIGURE 04</b>	<b>MIXER DIRECTIONAL CONTROL VALVE ASSEMBLY</b>
<b>FIGURE 05</b>	<b>MIXER LIFT DIRECTIONAL CONTROL VALVE ASSEMBLY</b>
<b>FIGURE 06</b>	<b>ENGINE PAD MOUNT ASSEMBLY</b>
<b>FIGURE 07</b>	<b>LIFT MIXER HYDRAULIC PUMP ASSEMBLY</b>
<b>FIGURE 08</b>	<b>LIFT MIXER CYLINDER ASSEMBLY</b>
<b>FIGURE 09</b>	<b>MIXER WELDMENT ASSEMBLY</b>
<b>FIGURE 10</b>	<b>MIXING BLADE ASSEMBLY</b>
<b>FIGURE 11</b>	<b>MIXER MOTOR ASSEMBLY</b>





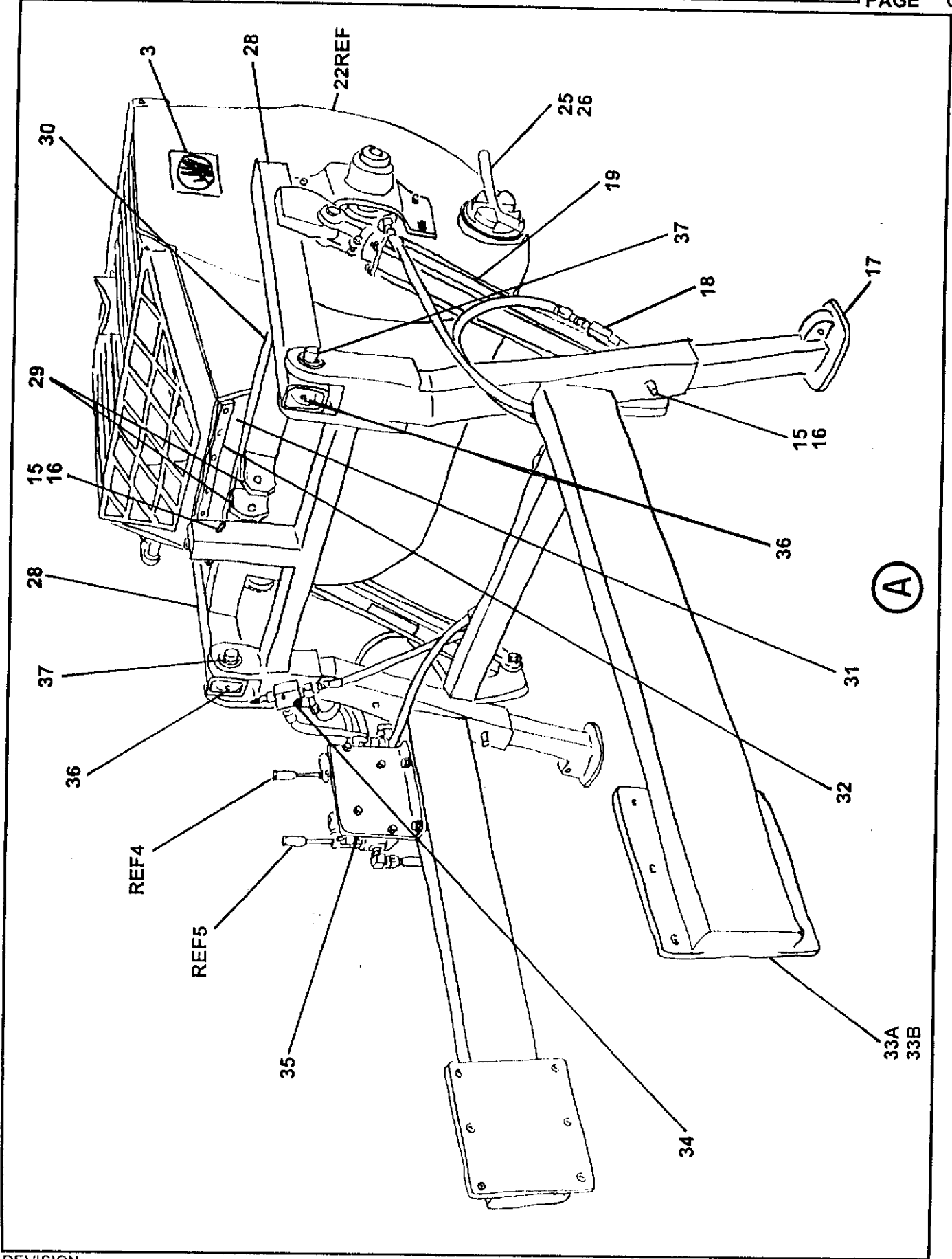
ITEM NO.	REED'S PARTS NO.	DESCRIPTION					QTY
		1	2	3	4	5	
-1A	86173	Installation, <b>B10RX</b> Standard Hopper Lift Mixer (See Group 10, Figure 01 for NHA)					Ref
-1B	86172	Installation, <b>B10RX</b> Harsh Mix Hopper Lift Mixer (See Group 10, Figure 02 for NHA)					Ref
2	90-02	• Assembly, Water Plumbing (See Group 90, Figure 02 for DET)					1
3	75005	• Decal, Danger, Do Not Put Hand					2
4	90-04	• Assembly, Mixer Directional Control Valve (See Group 90, Figure 04 for DET)					1
5	90-05	• Assembly, Mixer Lift Directional Control Valve (See Group 90, Figure 05 for DET)					1
6	85870	• Kit, Lift Mixer Hose (See Schematic Section, Option Page for REF)					1
7	79247	• Separator, Magnetic					1
8	77931	• Assembly, Engine Pad Mounting (See Group 90, Figure 06 for DET)					1
9	801022	• Assembly, Lift Mixer Hydraulic Pump (See Group 90, Figure 07 for DET)					1
10	85934	• Weldment, Lift Mixer Right Side Fender					1
11	85935	• Weldment, Lift Mixer Left Side Fender					1
12	79651	• Weldment, 4 Inch Flange Outlet (See Group 60, Figure 02 for REF)					1
13A	86157	• Elbow, 90 for Standard Hopper Lift Mixer					1
13B	86158	• Elbow, 90 for Harsh Mix Hopper Lift Mixer					1
14A	71530	• Clamp, Adjustable 4 Inch for Standard Hopper Lift Mixer					1
14B	71522	• Clamp, Adjustable 3 Inch for Harsh Mix Hopper Lift Mixer					1
15	85595	• Pin, Q / R					3
16	800418	• Lanyard, Q / R Pin					3
17	85500	• Weldment, Outrigger Inner					2
18	76885	• Fuse, 6 GPM Velocity					2
19	72218	• Assembly, Lift Mixer Cylinder (See Group 90, Figure 08 for DET)					2
-20	85178	• Assembly, Lift Mixer Weldment					1
-21	85561	• • Weldment, Lift Mixer					1
22	85562	• • • Kit, Motor					1
23	90-09	• • • Assembly, Mixer Weldment (See Group 90, Figure 09 for DET)					1
24	97007	• • • Assembly, Mixer Motor (See Group 90, Figure 11 for DET)					1
25	75428	• • • Plug, Pipe					1
26	75429	• • • Weldment, Flange					1
27	79686	• • Bracket, Water Meter					1

DASH (-) ITEM NOT ILLUSTRATED



# LIFT MIXER INSTALLATION

**B10RX**  
**PARTS**  
GROUP 90  
FIGURE 01  
PAGE 03



REVISION:

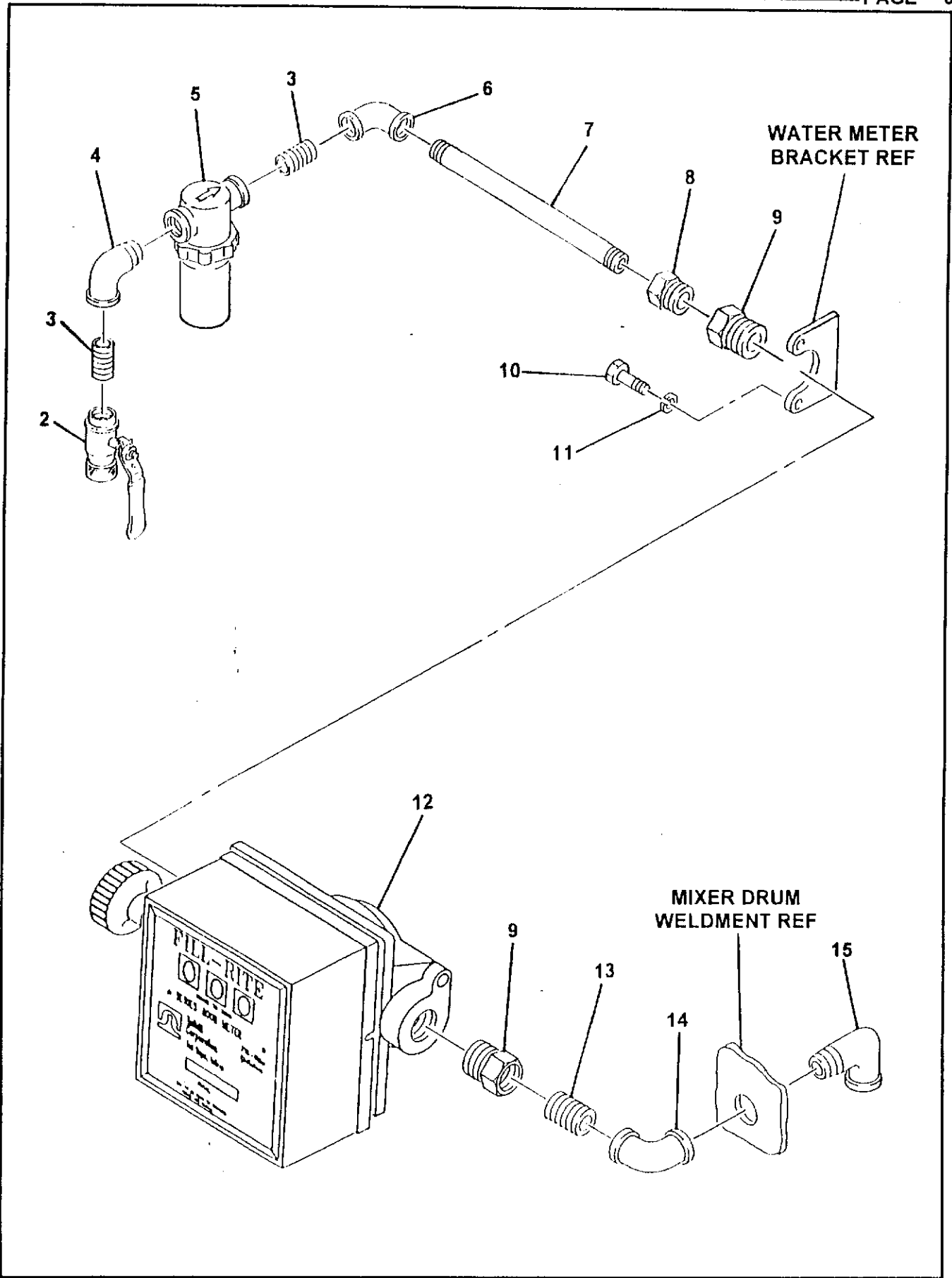


# LIFT MIXER INSTALLATION

**B10RX**  
**PARTS**  
GROUP 90  
FIGURE 01  
PAGE 04

ITEM NO.	REED'S PARTS NO.	DESCRIPTION					QTY
		1	2	3	4	5	
15	85595	• Pin, Q / R					3
16	800418	• Lanyard, Q / R Pin					3
17	85500	• Weldment, Outrigger Inner					2
18	76885	• Fuse, 6 GPM Velocity					2
19	72218	• Assembly, Lift Mixer Cylinder (See Group 90, Figure 08 for DET)					2
-20	85178	• Assembly, Lift Mixer Weldment					1
-21	85561	• • Weldment, Lift Mixer					1
22	85562	• • • Kit, Motor					1
23	97010	• • • Assembly, Mixer Weldment (See Group 90, Figure 09 for DET)					1
24	97007	• • • Assembly, Mixer Motor (See Group 90, Figure 11 for DET)					1
25	75428	• • • Plug, Pipe					1
26	75429	• • • Weldment, Flange					1
27	79686	• • Bracket, Water Meter					1
28	72202	• • Weldment, Side Tube					2
29	85632	• • Bracket					2
30	85183	• • Tube, Cross					1
31	85924	• Flap, Mixer Rubber					1
32	85925	• Flat, Mixer Rubber Flap					1
33A	86159	• Weldment, <b>B10RX</b> Standard Hopper Lift Mixer Frame					1
33B	86192	• Weldment, <b>B10RX</b> Harsh Mix Hopper Lift Mixer Frame					1
34	79718	• Valve, Flow Control					1
35	85627	• Bracket, Valve Mounting					1
36		• Fitting, Grease STR					2
37	76882	• Pin, Mixer Pivot					2

DASH (-) ITEM NOT ILLUSTRATED





# WATER PLUMBING ASSEMBLY

**B10RX**  
**PARTS**  
GROUP 90  
FIGURE 02  
PAGE 02

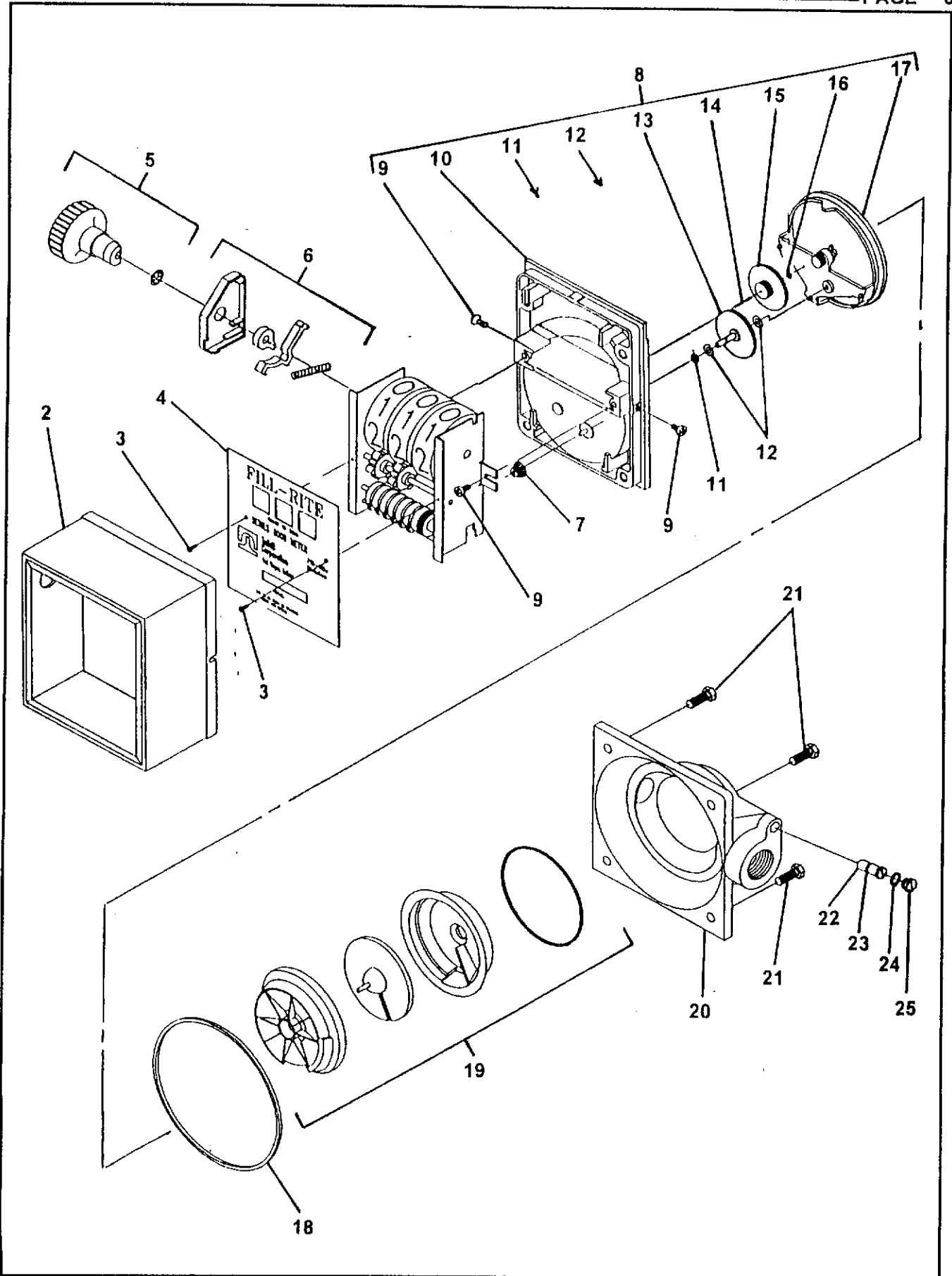
ITEM NO.	REED'S PARTS NO.	DESCRIPTION					QTY
		1	2	3	4	5	
-1	90-05	Assembly, Water Plumbing (See Group 90, Figure 01 for NHA)					Ref
2	13186	• Valve, Ball					1
3	10267	• Nipple					2
4	10204	• Elbow, Street					2
5	78158	• Strainer					1
6	10269	• Elbow					1
7	10257	• Nipple					1
8		• Bushing					1
9		• Bushing					2
10		• Bolt, Hex					2
11		• Washer, Lock					2
12	71428	• Assembly, Water Meter (See Group 90, Figure 03 for DET)					1
13	20144	• Nipple					1
14	20143	• Elbow					1
15	56412	• Elbow, Street					1

DASH (-) ITEM NOT ILLUSTRATED



# WATER METER ASSEMBLY

**B10RX**  
**PARTS**  
GROUP 90  
FIGURE 03  
PAGE 01

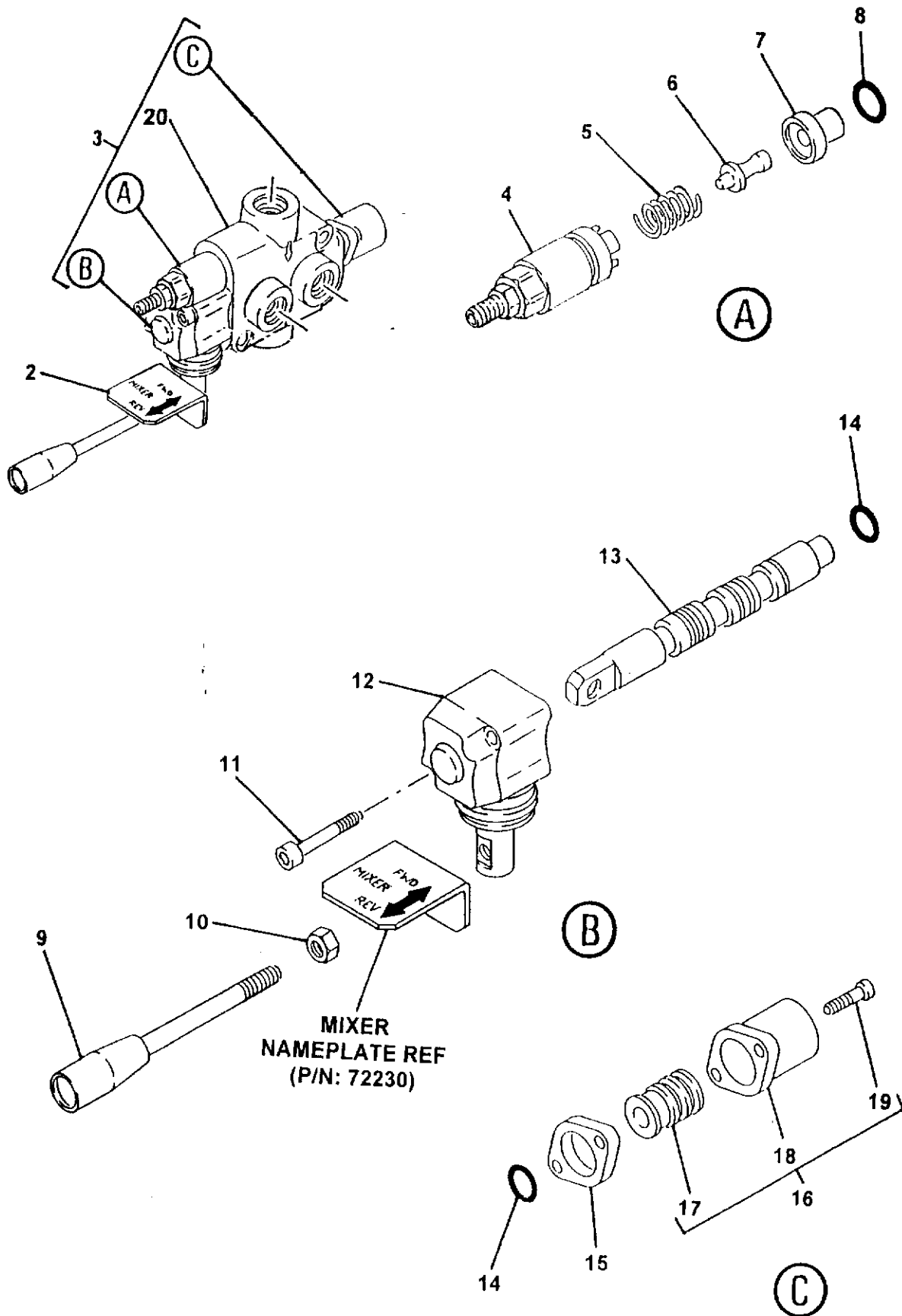


REVISION:



ITEM NO.	REED'S PARTS NO.	DESCRIPTION	QTY
		1 2 3 4 5	
-1	71428	Assembly, Water Meter (See Group 90, Figure 02 for NHA)	Ref
2		• Cover, Counter	1
3		• Screw	2
4		• Face, Counter	1
5		• Assembly, Knob	1
6		• Counter	1
7		• Bevel, Pinion	1
8		• Assembly, Cover	1
9		•• Screw	4
10		•• Cover, Meter	1
11		•• O-Ring	1
12		•• Washer	2
13		•• Gear, Drive	1
14		•• Shaft, Cluster Gear	1
15		•• Gear, Cluster	1
16		•• Washer	1
17		•• Frame, Gear	1
18		• O-Ring	1
19		• Assembly, Meter Chamber	1
20		• Housing, Outlet	1
21		• Screw, Hex	4
22		• Screw, Calibration	1
23		• O-Ring for Calibration Screw	1
24		• O-Ring	1
25		• Screw, Seal	1
-26		• Kit, Repair (Included Items: 7, 11, 12, 13, 14, 15, 16, 17, 18, 19, 23 and 24)	1

DASH (-) ITEM NOT ILLUSTRATED



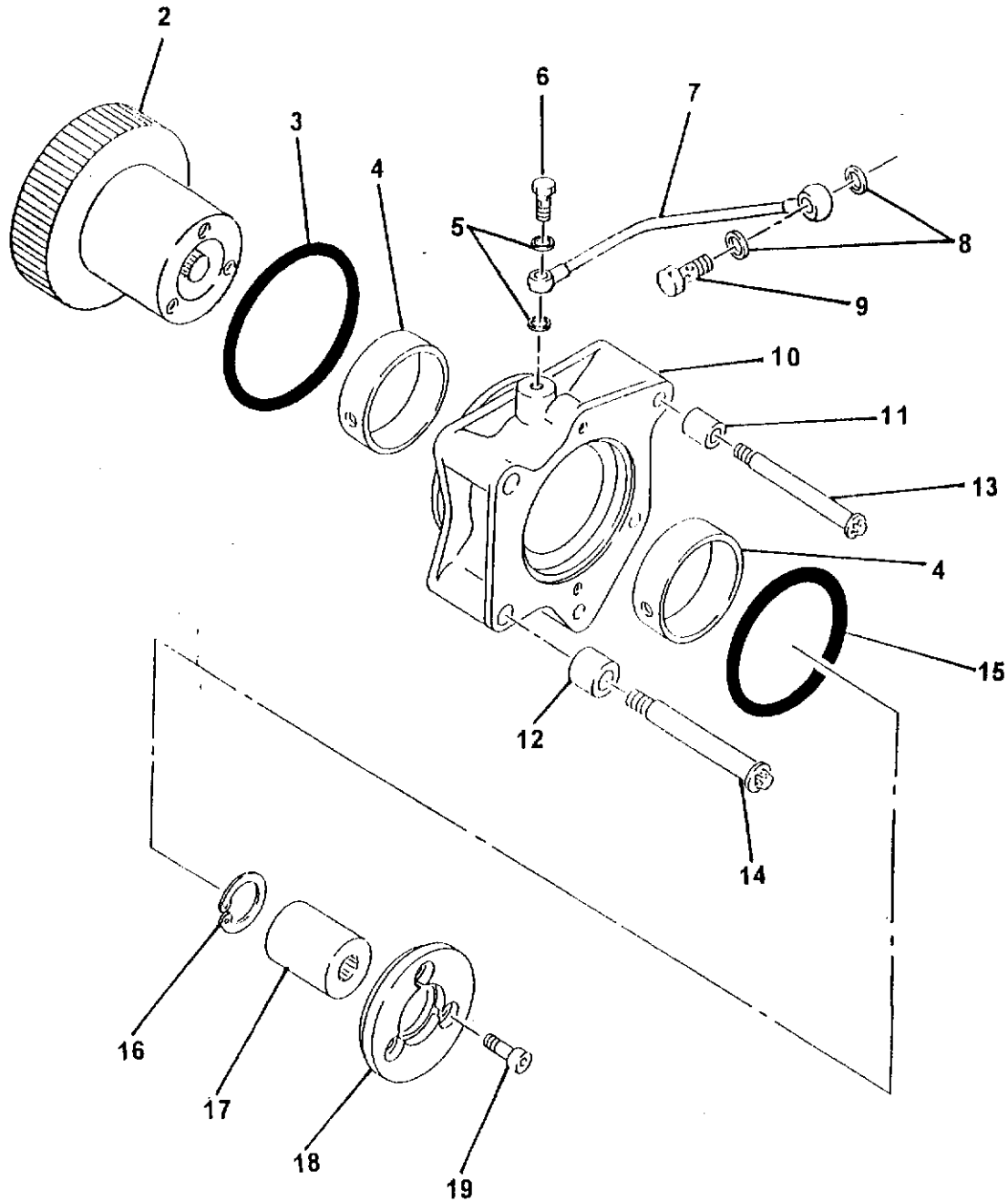
ITEM NO.	REED'S PARTS NO.	DESCRIPTION					QTY
		1	2	3	4	5	
-1	90-04	Assembly, Mixer Directional Control Valve (See Group 90, Figure 01 for NHA)					Ref
2	72230	• Nameplate, Mixer					1
3	74584	• Sub-Assembly, Control Valve					1
4		•• Kit, Screw					1
5		•• Spring					1
6		•• Pin, Screw Kit					1
7		•• Ring					1
8		•• O-Ring					1
9		•• Handle, Control Valve					1
10		•• Nut (attaching parts)					1
11		•• Screw, SOC					2
12		•• Lever, L					1
13		•• Spool, Double Acting					1
14		•• O-Ring					2
15		•• Spacer					1
16	74473	•• Kit, Detent Spring					1
17		••• Spool, Control Spring					1
18		••• Cap, Spool					1
19		••• Screw, SOC					2
20		•• Body, Control Valve					1

DASH (-) ITEM NOT ILLUSTRATED



ITEM NO.	REED'S PARTS NO.	DESCRIPTION					QTY
		1	2	3	4	5	
-1	90-05	Assembly, Mixer Lift Directional Control Valve (See Group 90, Figure 01 for NHA)					Ref
2	72229	• Nameplate, Mixer					1
3	79716	• Sub-Assembly, Control Valve					1
4		•• Kit, Screw					1
5		•• Spring					1
6		•• Pin, Screw Kit					1
7		•• Ring					1
8		•• O-Ring					1
9		•• Handle, Control Valve					1
10		•• Nut (attaching parts)					1
11		•• Screw, SOC					2
12		•• Lever, L					1
13		•• Spool, Double Acting					1
14		•• O-Ring					2
15		•• Spacer					1
16	74473	•• Kit, Detent Spring					1
17		••• Spool, Control Spring					1
18		••• Cap, Spool					1
19		••• Screw, SOC					2
20		•• Body, Control Valve					1

DASH (-) ITEM NOT ILLUSTRATED



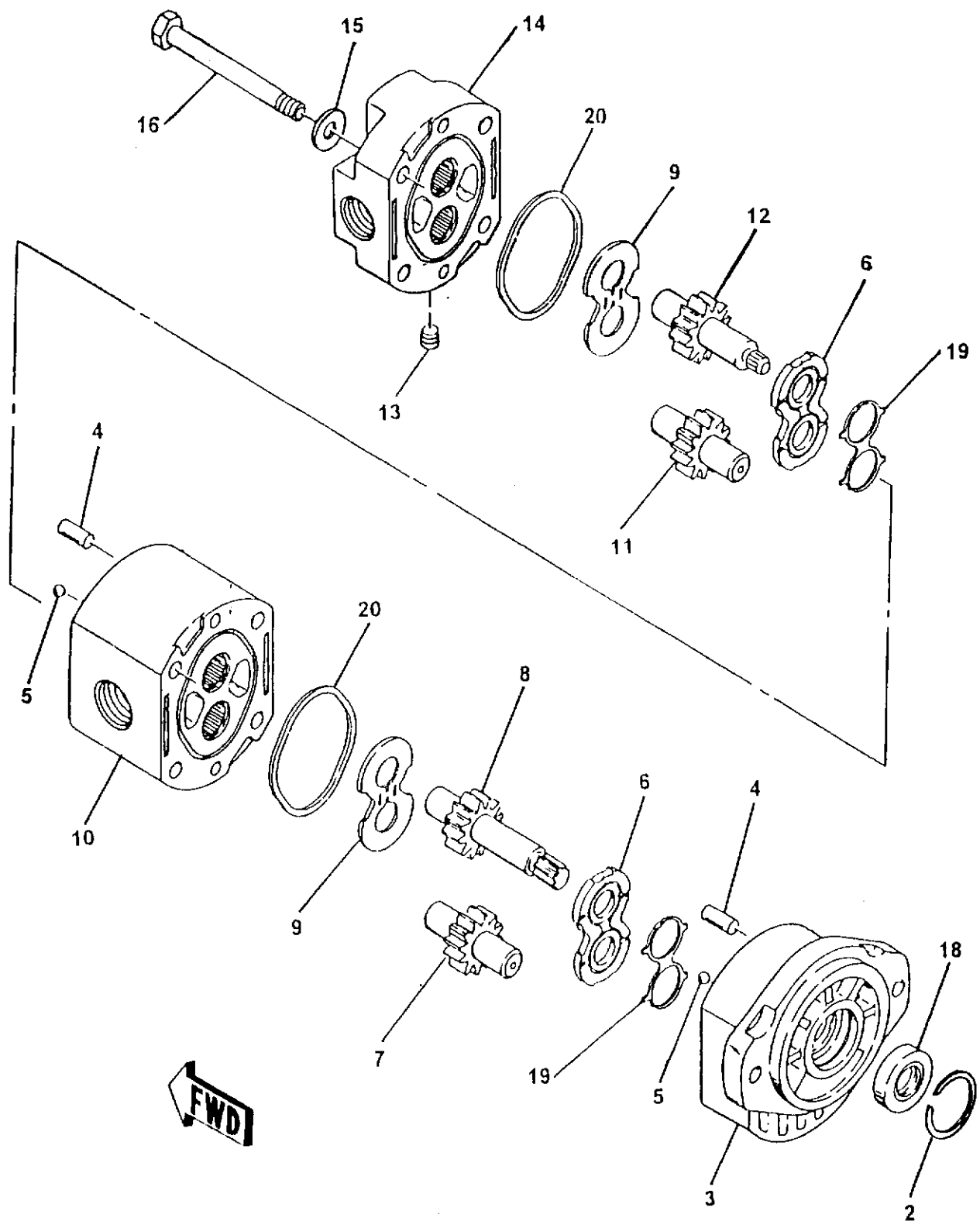
ITEM NO.	REED'S PARTS NO.	DESCRIPTION					QTY
		1	2	3	4	5	
-1	77931	Assembly, Engine Mount Pad (See Group 90, Figure 01 for NHA)					Ref
2		• Gear, Drive					1
3		• O-Ring, Black					1
4		• Bushing					2
5		• Washer					2
6		• Bolt, Special					1
7		• Tube, Copper					1
8		• Washer					2
9		• Bolt, Special					1
10		• Mount, Pad					1
11		• Bushing					2
12		• Bushing					2
13		• Bolt					2
14		• Bolt					2
15		• O-Ring, Maroon					1
16		• Ring, Snap					1
17		• Coupling					1
18		• Cover					1
19		• Bolt					3

DASH (-) ITEM NOT ILLUSTRATED



# LIFT MIXER HYDRAULIC PUMP ASSEMBLY

**B10RX**  
**PARTS**  
GROUP 90  
FIGURE 07  
PAGE 01

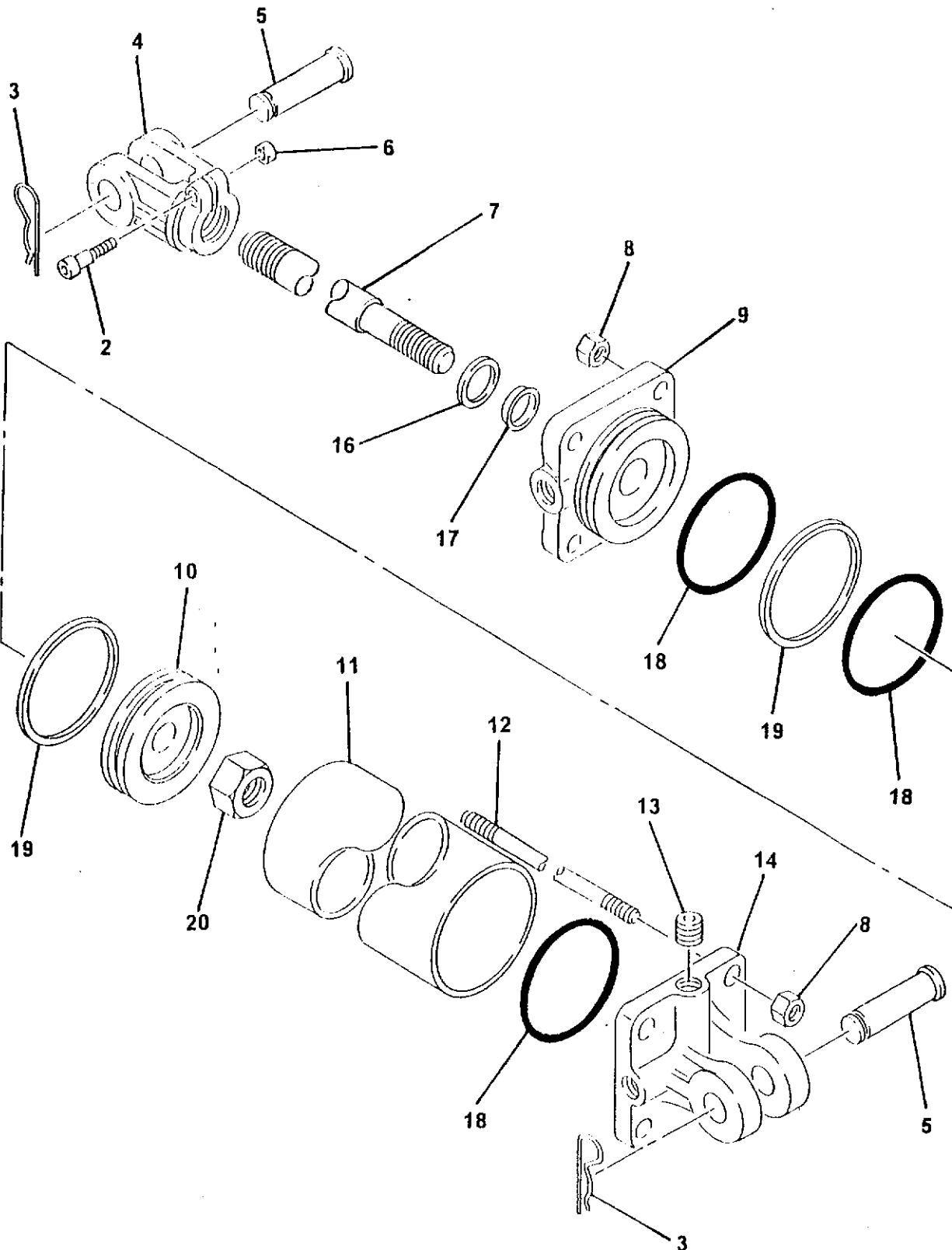


REVISION:



ITEM NO.	REED'S PARTS NO.	DESCRIPTION					QTY
		1	2	3	4	5	
-1	801022	Assembly Lift Mixer Hydraulic Pump (See Group 90, Figure 01 for NHA)					Ref
2			• Retainer				1
3			• Assembly, Body				1
4			• Pin, Dowel				4
5			• Bearing, Ball				4
6			• Plate, Wear				2
7			• Gear, Driven				1
8			• Gear, Drive				1
9			• Plate, Thrust				2
10			• Assembly, Middle Body				1
11			• Gear, Rear Driven				1
12			• Cover, Rear Drive				1
13			• Plug, Pipe				1
14			• Assembly, Cover				1
15			• Washer, Flat (attaching parts)				4
16			• Screw, Hex (attaching parts)				4
-17			• Kit, Seal				1
18			• • Seal, Shaft				1
19			• • Rubber, Space				2
20			• • Ring, Square Cut				2

DASH (-) ITEM NOT ILLUSTRATED



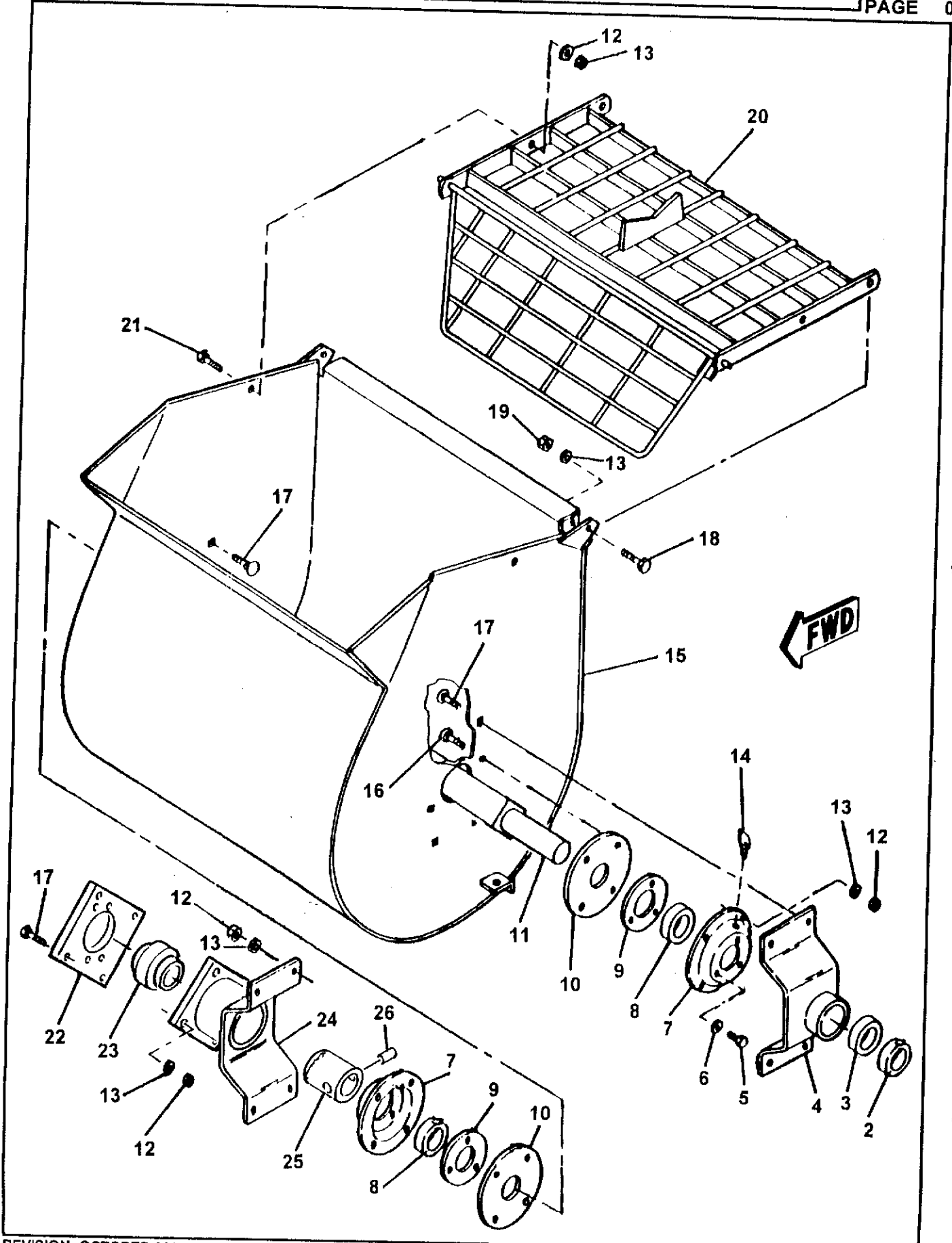
ITEM NO.	REED'S PARTS NO.	DESCRIPTION					QTY
		1	2	3	4	5	
-1	72218	Assembly, Lift Mixer Cylinder (See Group 90, Figure 01 for NHA)					Ref
2		• Screw, Cap					1
3		• Pin, Clip					2
4		• Clevis					1
5		• Rod, Clevis Pin					2
6		• Nut, Clevis					1
7		• Rod					1
8		• Nut, Tie Rod					8
9		• Head					1
10		• Piston					1
11		• Tube					1
12		• Rod, Tie					4
13		• Plug, Pipe					1
14		• Base					1
-15		• Kit, Seal					1
16		• • Wiper					1
17		• • U-Cup					1
18		• • O-Ring					3
19		• • Ring, Back Up					2
20		• • Nut, Piston					1

DASH (-) ITEM NOT ILLUSTRATED



# MIXER WELDMENT ASSEMBLY

**B10RX**  
**PARTS**  
GROUP 90  
FIGURE 09  
PAGE 01



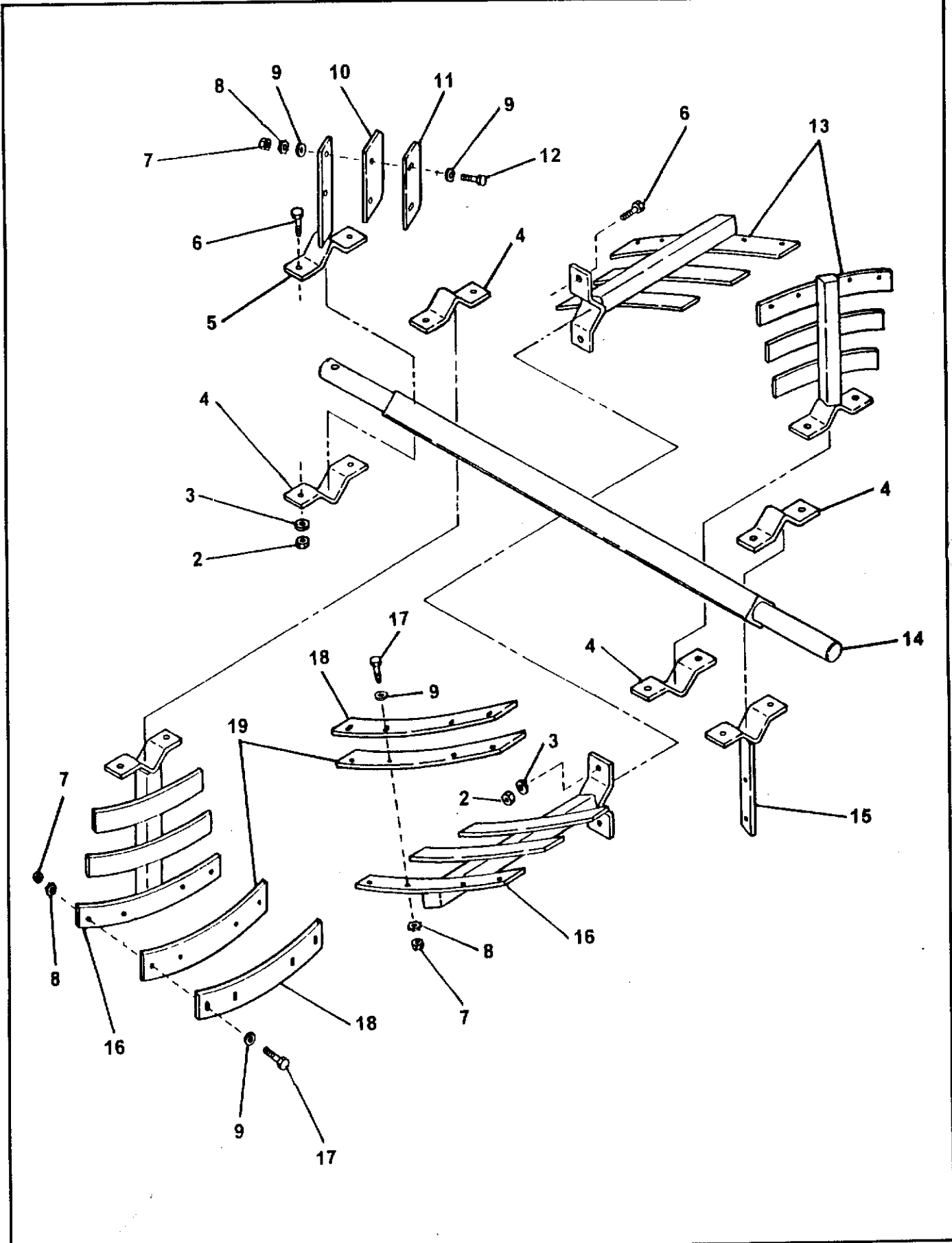
ITEM NO.	REED'S PARTS NO.	DESCRIPTION					QTY
		1	2	3	4	5	
-1	90-09	Assembly, Mixer Weldment (See Group 90, Figure 01 for NHA)					Ref
2	97036	• Collar, Locking					1
3	97037	• Bearing, Drum Shaft					1
4	97038	• Assembly, Bearing Housing					1
5		• Capscrew, Hex					6
6		• Washer, Spring Lock					6
7	97039	• Housing, Seal					2
8	97021	• Seal, Shaft					2
9	97034	• Retainer, Seal					2
10	97020	• Seal, Drum					2
11	90-10	• Assembly, Mixing Blade (See Group 90, Figure 10 for NHA)					1
12		• Nut, Hex					10
13		• Washer					12
14		• Fitting, Grease					2
15		• Weldment, Drum Shell					1
16		• Capscrew, Flat					6
17		• Capscrew, Flat					12
18		• Capscrew, Hex					2
19		• Nut, 3/8 Cone Lock					2
20	97045	• Assembly, Grill (2 Piece)					1
21		• Capscrew, Hex					1
22	97044	• Adapter, Motor					1
23	97043	• Bearing, Coupling Support					1
24	97042	• Assembly, Motor Housing					1
25	97040	• Coupling, Hydraulic Motor					1
26	97041	• Pin, Dowel					1

DASH (-) ITEM NOT ILLUSTRATED



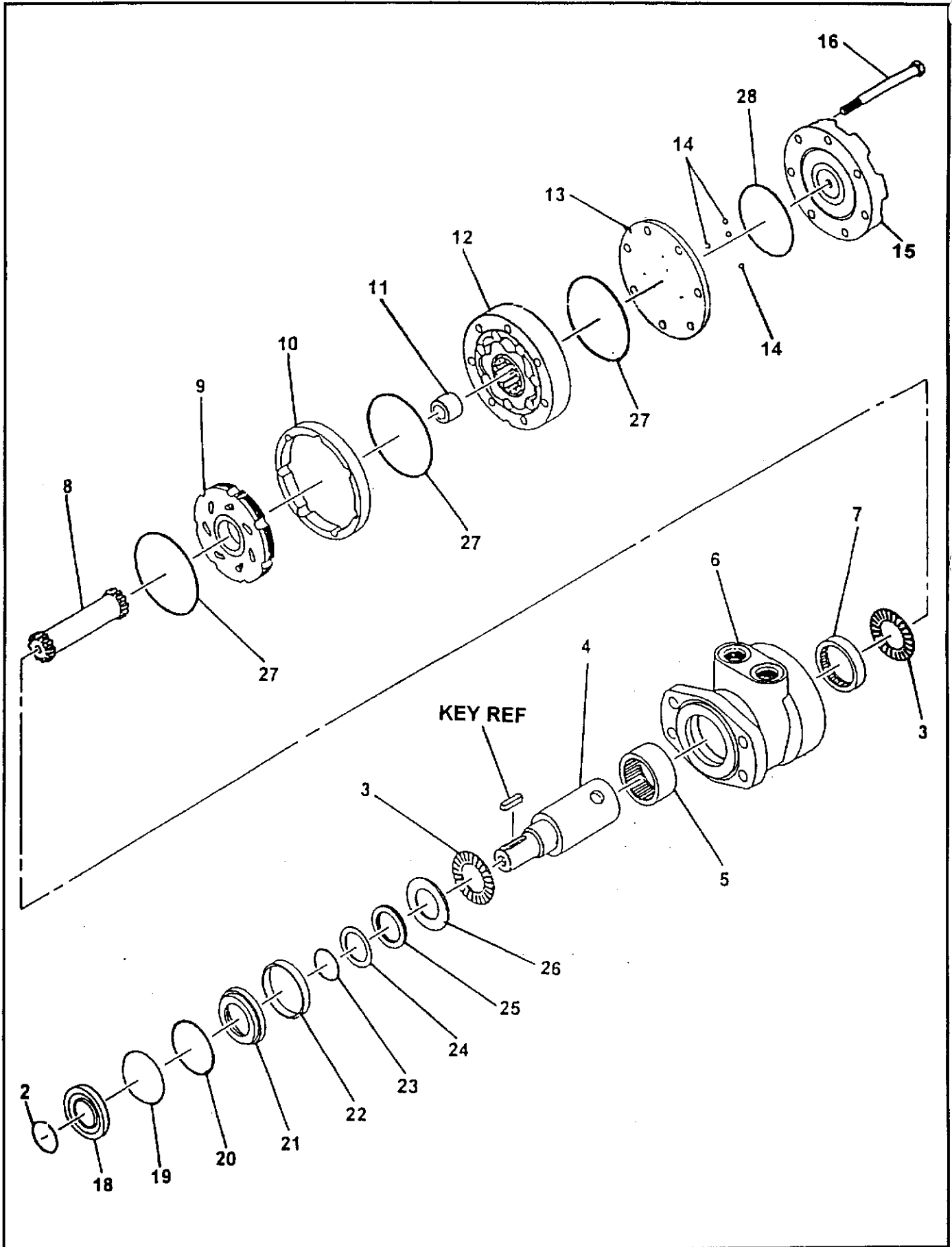
# MIXING BLADES ASSEMBLY

**B10RX**  
**PARTS**  
GROUP 90  
FIGURE 10  
PAGE 01



ITEM NO.	REED'S PARTS NO.	DESCRIPTION	QTY
		1 2 3 4 5	
-1	90-10	Assembly, Mixing Blade (See Group 90, Figure 09 for NHA)	Ref
2		• Nut, Hex	10
3		• Washer, Spring Lock	10
4	97026	• Cap, Mixing Arm	4
5	97032	• Assembly, Side Arm	1
6		• Capscrew, Hex	10
7		• Nut, Hex	20
8		• Washer, Spring Lock	20
9		• Washer, Flat	20
10	97019	• Wiper, Drum End	2
11	97030	• Plate, End Wiper Backing	2
12		• Capscrew, Hex	4
13	97024	• Assembly, Mixing Arm	2
14	97046	• Shaft, Drum	1
15	97031	• Assembly, Side Arm	1
16	97022	• Assembly, Mixing Arm	2
17		• Capscrew, Hex	16
18	97028	• Plate, Wrap Wiper Backing	4
19	97018	• Wiper, Drum Wrap	4

DASH (-) ITEM NOT ILLUSTRATED







# MIXER MOTOR ASSEMBLY

**B10RX**  
**PARTS**  
GROUP 90  
FIGURE 11  
PAGE 02

ITEM NO.	REED'S PARTS NO.	DESCRIPTION					QTY
		1	2	3	4	5	
-1	97007	Assembly, Mixer Motor (See Group 90, Figure 01 for NHA)					Ref
2		• Pin					1
3		• Bearing, Thrust					2
4		• Shaft					1
5		• Bearing, Front					1
6		• Housing, Motor					1
7		• Bearing, Rear					1
8		• Link, Drive					1
9		• Manifold					1
10		• Boot, Manifold					1
11		• Spacer, Drive Link					1
12		• Assembly, Rotor					1
13		• Plate, Balance					1
14		• Ball, Steel					4
15		• Cover, End					1
16		• Bolt, Hex (attaching parts)					7
-17	97014	• Kit, Seal					1
18		• • Seal, Dust					1
19		• • Ring, SPL Wire					1
20		• • Shim, Back Up					1
21		• • Seal, Carrier					1
22		• • Seal, High Pressure					1
23		• • Shim, Back Up					1
24		• • Shim, Teflon Back Up					1
25		• • Seal, Shift					1
26		• • Washer, Thrust					1
27		• • Seal, Body					3
28		• O-Ring					1

DASH (-) ITEM NOT ILLUSTRATED

**REED**

TRAILER MOUNTED PUMP  
WITH LIFT MIXER MODEL *B10RX*  
ILLUSTRATED PARTS MANUAL

*B10RX*  
PARTS  
GROUP 90  
FIGURE 12  
PAGE 01

THIS PAGE INTENTIONALLY LEFT BLANK.

REVISION: